

**TUCKER**

**SNO-CAT**

**CORP.**

**MEDFORD, OREGON**



**Specifications: RUBBER BELTED SNO-CAT 1600 SERIES**



**“Extra Flotation For Greater Climbing and Side Hilling”**

The popular 1600 series Sno-Cat is a proven favorite in soft deep snow. Developed around the time-proven Tucker Mechanical Drive Train, this rubber tracked Sno-Cat offers extra performance while maintaining its 8 foot overall width, for ease in transporting.

# 1600 SERIES

## SPECIFICATIONS

## STANDARD EQUIPMENT

**LENGTH:** 17' 7"<sup>\*\*</sup> **WIDTH:** 8" **HEIGHT:** 7' 7"

**WEIGHT:** (UNLADEN) 6840-7060 lbs.\*

**PASSENGERS:** 2 TO 10

**LOAD RATING:** 1900 LBS.

**GROUND BEARING PRESSURE:**

(UNLADEN) ZERO PENETRATION — .80 PSI

(UNLADEN), 7" PENETRATION — .65 PSI

**TRACK DIMENSIONS:** (X4)

WIDTH, 28" LENGTH, 92"

**TURN RADIUS:** 18' 6"<sup>\*\*</sup>

**GROUND CLEARANCE:** ZERO PEN., 15"

**ENGINE:** CHRYSLER INDUSTRIAL V-8, 318 C.I.D.

**OPTIONAL ENGINES:** CHRYSLER INDUSTRIAL V-8,  
360 C.I.D./V-378-C CUMMINS DIESEL, 145 H.P./  
VT-378-C CUMMINS 155 H.P. FACTORY  
TURBOCHARGED (ALTITUDE COMPENSATED)

**TRANSMISSION:** N.P.G. 435 MANUAL 4 SPD., 1 REV.

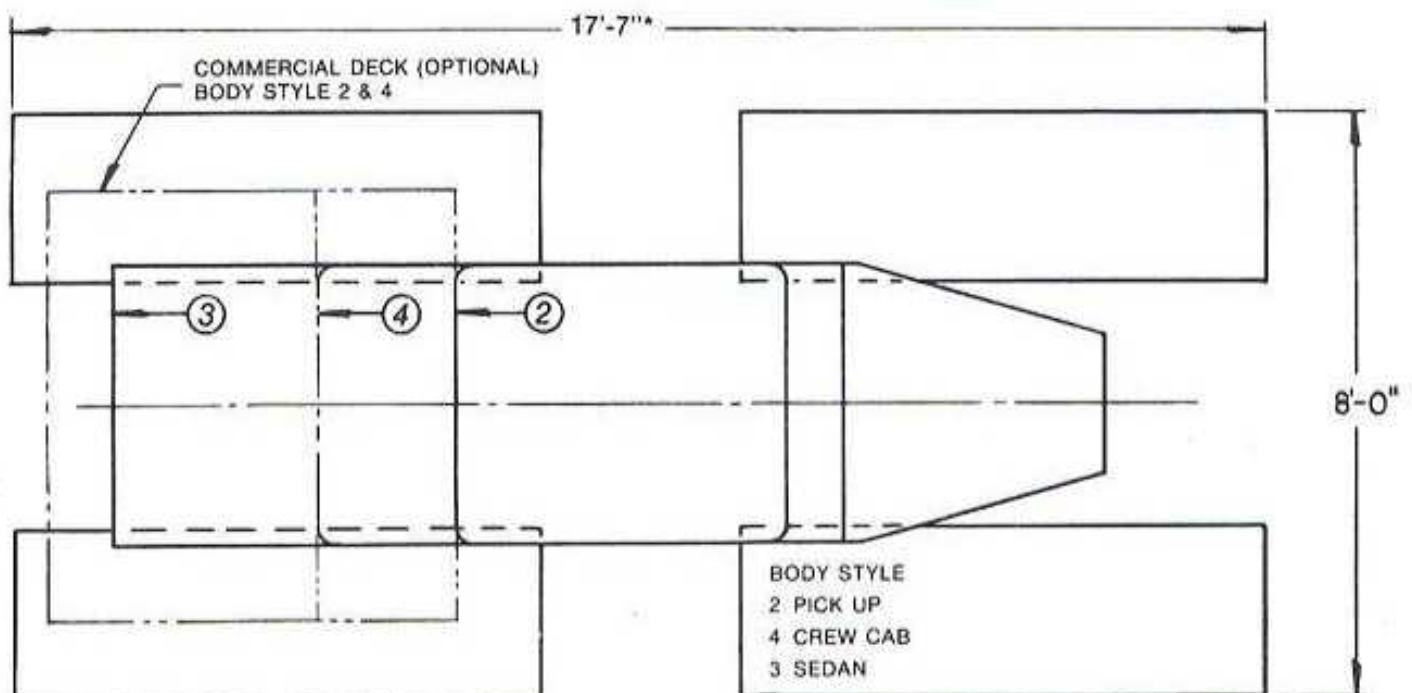
**OPTIONAL TRANSMISSIONS:** A-727 AUTO. 3 SPD./  
N.P.G. 542 MANUAL 5 SPD., 1 REV./ALLISON  
AT-545 AUTO. 4 SPD., 1 REV.

**FUEL CAPACITY:** 49 U.S. GALLONS

HYDRAULIC FOOT BRAKE  
MECHANICAL PARKING BRAKE  
HYDRAULIC STEERING  
FULL ENGINE INSTRUMENTS  
ELECTRIC FUEL PUMP  
H.D. FUEL FILTER  
CAB HEATER - 36,000 B.T.U.  
FRONT DEFROSTER W\*ADJ. OUTLETS  
PERSONNEL ASSIST HANDLES  
DUAL WINDSHIELD WIPER SYSTEM  
DUAL HEADLAMPS  
SEALED BEAM BACKUP LIGHT  
FRONT BUCKET SEATS  
DRIVER SEAT BELT  
DUAL ELECTRIC HORNS  
CAB ENTRY STEPS  
COOLANT RECOVERY SYSTEM  
R.O.P.S. TO S.A.E. J-395A  
LOCKING DOOR HANDLES  
ACRYLIC ENAMEL PAINT "OMAHA ORANGE"  
52" INSULATED CAB WITH MIRRORS/DOME  
LIGHT

SEE PRICE SHEET FOR OPTIONAL EQUIPMENT AND PRICES.

\*EXCEPT MODELS WITH CUMMINS DIESEL ENGINE OPTION.





**TUCKER**

**SNO-CAT**

**CORP.**

**MEDFORD, OREGON**



**SPECIFICATIONS: RUBBER BELTED SNO-CAT 1300 Series**



The 1300 Series is an ideal machine for use as a utility/personnel carrier or trailgroomer, as shown by the above Model 1342 with a Trailmaster® Trail Groomer.

- **LOW CAPITAL INVESTMENT**
  - **FOUR-TRACK DRIVE & AUTOMOTIVE CONTROLS FOR MAXIMUM TRACTION & EASY, COMFORTABLE RIDE**
  - **CONVENTIONAL DRIVE TRAIN FOR SIMPLE, LOW-COST MAINTENANCE**
  - **VARIOUS CAB CONFIGURATIONS & EASILY TRANSPORTED 8 FT. OVERALL WIDTH FOR ADAPTATION TO YOUR NEEDS**
-



# 1300 SERIES

## SPECIFICATIONS

**LENGTH:** 15' 1"    **WIDTH:** 8' 0"    **HEIGHT:** 7' 4"  
**WEIGHT:** (UNLADEN) ..... 5940-6160 LBS.  
**PASSENGERS:** ..... 2 TO 10  
**LOAD RATING:** ..... 1800 LBS.  
**GROUND BEARING PRESSURE (UNLADEN):**  
     ZERO PEN. .96 P.S.I.    7" PEN. .76 P.S.I.  
**TRACK DIMENSIONS (X4):** LENGTH ..... 69.5"  
   WIDTH ..... 28"  
**GROUND CLEARANCE (ZERO PEN)** ..... 12"  
**TURN RADIUS:** ..... 18' 6"  
**ENGINE:** CHRYSLER INDUSTRIAL V-8, 318 C.I.D.  
**OPTIONAL ENGINE:** CHRYSLER INDUSTRIAL V-8, 360 C.I.D.  
**TRANSMISSION:** N.P.G. 435 MANUAL 4 SPD.; 1 REV.  
**OPTIONAL TRANS:** A-727 CHRYSLER 3 SPD. AUTO./  
     N.P.G. 542 MANUAL 5 SPD, 1 REV./ALLISON  
     AT-545 AUTO. 4 SPD., REV.  
**FUEL CAPACITY:** ..... 49 U.S. GALLONS  
   80 U.S. GALLONS (OPT.)

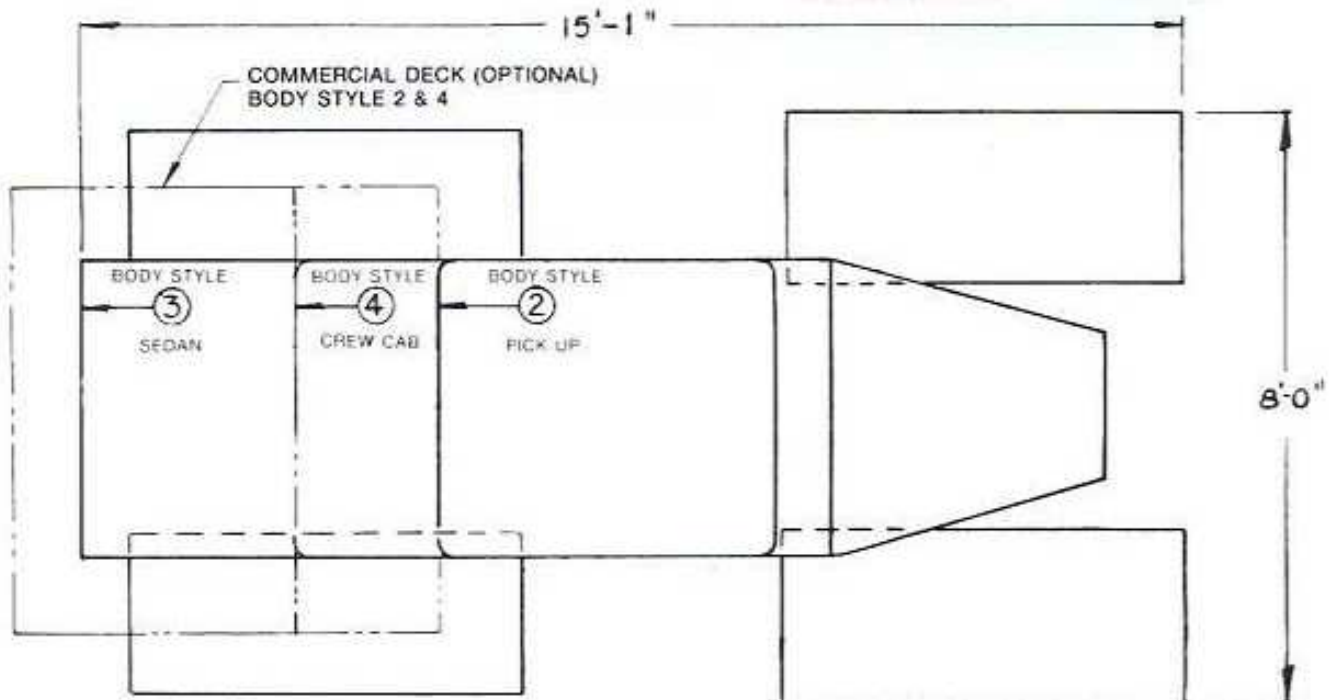
## STANDARD EQUIPMENT

HYDRAULIC FOOT BRAKE  
 MECHANICAL PARKING BRAKE  
 HYDRAULIC STEERING  
 FULL ENGINE INSTRUMENTS  
 ELECTRIC FUEL PUMP  
 H.D. FUEL FILTER  
 CAB HEATER — 36,000 B.T.U.  
 FRONT DEFROSTER W/ADJ. OUTLETS  
 PERSONNEL ASSIST HANDLES  
 DUAL WINDSHIELD WIPER SYSTEM  
 DUAL HEADLAMPS  
 SEALED BEAM BACKUP LIGHT  
 FRONT BUCKET SEATS  
 DRIVER SEAT BELT  
 DUAL ELECTRIC HORNS  
 CAB ENTRY STEPS  
 COOLANT RECOVERY SYSTEM  
 R.O.P.S. to S.A.E. J-395A  
 LOCKING DOOR HANDLES  
 PAINT ACRYLIC ENAMEL "OMAHA ORANGE"  
 52" INSULATED CAB WITH MIRRORS/DOME LIGHT

ADDITIONAL SPECIFICATIONS AS REQUIRED ARE AVAILABLE FROM TUCKER SNO-CAT CORP.

## PERFORMANCE DATA

Climbing Ability	Standard
Dirt or Hard Snow	80% slope
Soft Snow	50% slope
Sidehilling Ability	75% of climbing ability
Speed Maximum	14.22 mph





**TUCKER**

**SNO-CAT**

**CORP.**

**MEDFORD, OREGON**



**Specifications: RUBBER BELTED SNO-CAT 1500 SERIES**



**“THE ORIGINATOR OF A NEW GENERATION OF SNOW VEHICLES”**

ABOVE IS THE VERSATILE 1500 SERIES SNO-CAT, PICTURED WITH THE THREE BODY STYLES AVAILABLE TO ALL SNO-CATS.

THE “FIFTEEN HUNDRED’S” WERE DEVELOPED TO COMPLEMENT THE TRACTION AND CLIMBING ABILITY OF OUR WIDE STEEL TRACK SNO-CAT’S, WHILE OFFERING THE ADDITIONAL CAPABILITY OF TRAVEL OVER BARE GROUND.

STANDARD V8 POWER COMBINED WITH NEW TRACK DESIGN TECHNOLOGY OFFERS PLENTY OF MUSCLE TO ASSIST IN USING THE HEAVIEST SNOW GROOMING EQUIPMENT WHILE MANEUVERING ON THE MOST DIFFICULT OF ICY HILLS.

UTILITY AND GOVERNMENT SERVICE HAS FURTHER PROVEN THE VERSATILITY AND DURABILITY OF THE RUBBER TRACKED SNO-CATS, THE 1500’S ARE EASILY TRANSPORTABLE DUE TO THEIR 8 FOOT OVERALL WIDTH.



# 1500 SERIES

## SPECIFICATIONS

**LENGTH:** 15' 5" **WIDTH:** 8' **HEIGHT:** 7' 7"

**WEIGHT:** (UNLADEN) 6340/6560 LBS.\*

**PASSENGERS:** 2 TO 10

**LOAD RATING:** 1900 LBS.

**GROUND BEARING PRESSURE:**

(UNLADEN), ZERO PENETRATION — .97 PSI

(UNLADEN), 7" PENETRATION — .74 PSI

**TRACK DIMENSIONS:** (x4)

WIDTH: 28" LENGTH: 76"

**TURN RADIUS:** 18' 6"

**GROUND CLEARANCE:** ZERO PEN., 15"

**ENGINE:** CHRYSLER INDUSTRIAL V-8, 318 C.I.D.

**OPTIONAL ENGINES:** CHRYSLER INDUSTRIAL V-8,

360 C.I.D./V-378-C CUMMINS DIESEL, 145 H.P./

VT-378-C CUMMINS 155 H.P. FACTORY

TURBOCHARGED (ALTITUDE COMPENSATED)

**TRANSMISSION:** N.P.G. 435 MANUAL 4 SPD., 1 REV.

**OPTIONAL TRANSMISSIONS:** A-727 CHRYSLER 3-SPD.

AUTO./N.P.G. 542 MANUAL 5 SPD., 1 REV./

ALLISON AT-545 AUTO. 4 SPD., 1 REV.

**FUEL CAPACITY:** 49 U.S. GALLONS

\*EXCEPT ON MODELS WITH CUMMINS DIESEL ENGINE OPTION.

## STANDARD EQUIPMENT

HYDRAULIC FOOT BRAKE

MECHANICAL PARKING BRAKE

HYDRAULIC STEERING

FULL ENGINE INSTRUMENTS

ELECTRIC FUEL PUMP

H.D. FUEL FILTER

CAB HEATER - 36,000 B.T.U.

FRONT DEFROSTER W/ADJ. OUTLETS

PERSONNEL ASSIST HANDLES

DUAL WINDSHIELD WIPER SYSTEM

DUAL HEADLAMPS

SEALED BEAM BACKUP LIGHT

FRONT BUCKET SEATS

DRIVER SEAT BELT

DUAL ELECTRIC HORNS

CAB ENTRY STEPS

COOLANT RECOVERY SYSTEM

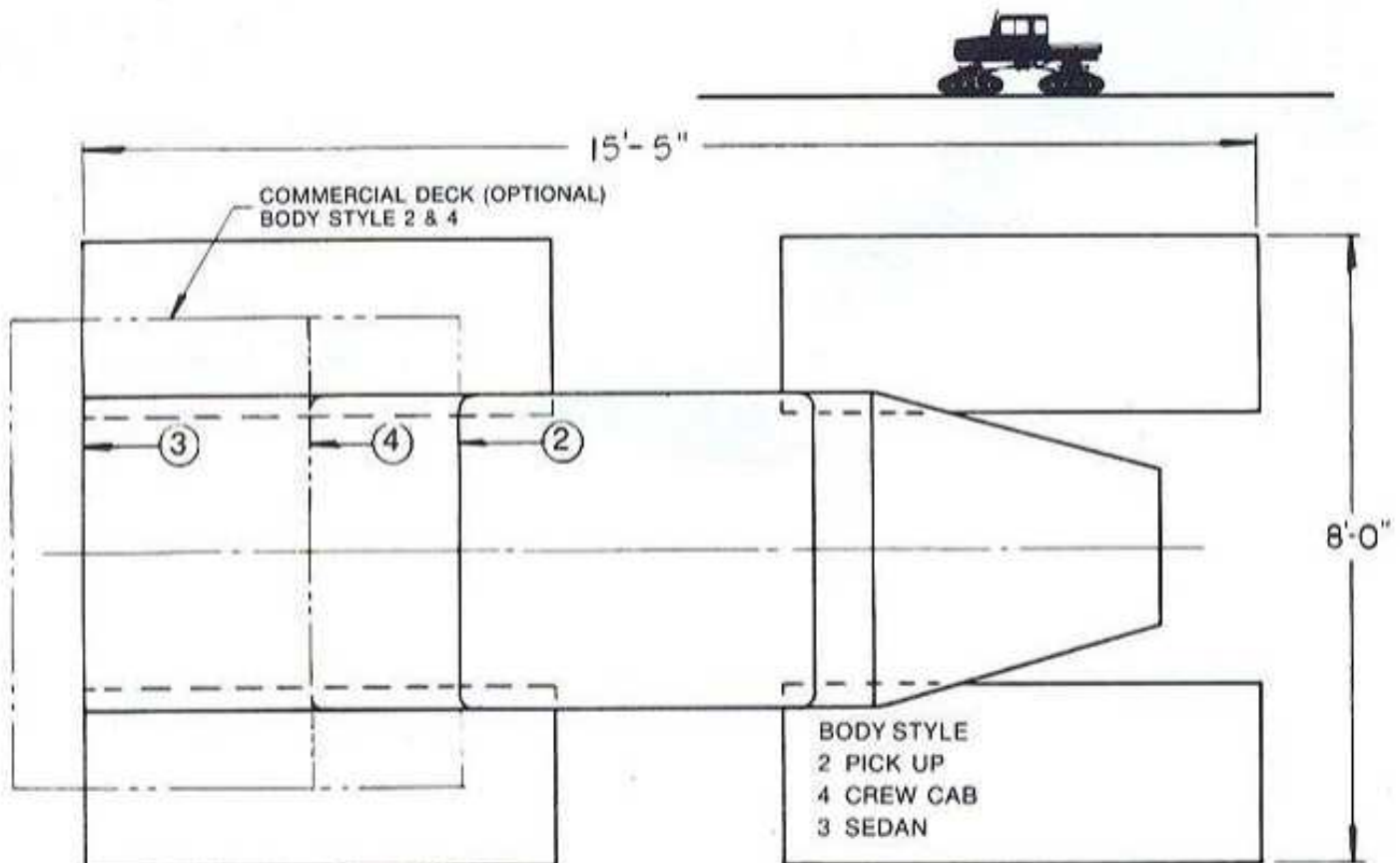
R.O.P.S. TO S.A.E. J-395A

LOCKING DOOR HANDLES

ACRYLIC ENAMEL PAINT "OMAHA ORANGE"

52" INSULATED CAB WITH MIRRORS/DOME LIGHT

SEE PRICE SHEET FOR OPTIONAL EQUIPMENT AND PRICES.





**TUCKER**

**SNO-CAT**

**CORP.**

MEDFORD, OREGON



**Specifications: RUBBER BELTED SNO-CAT 1700 SERIES**



THE PROVEN 1700 SERIES SNO-CAT OFFERS AN EXTRA MEASURE OF MUSCLE FOR HIGH DUTY INDUSTRIAL TASKS.

MANY SPECIAL FEATURES ARE AVAILABLE TO MAKE THIS SNO-CAT SPECIFICALLY SUITED TO YOUR JOB. THIS SNO-CAT IS THE CHOICE OF INDUSTRIAL USERS AROUND THE WORLD.



# 1700 SERIES

## SPECIFICATIONS

**LENGTH:** 18' 2" **WIDTH:** 8' **HEIGHT:** 7' 10"

**WEIGHT:** (UNLADEN) 8410-8630 lbs.\*

**PASSENGERS:** 2 TO 14

**LOAD RATING:** 2300 LBS. TO 3500 LBS.

**GROUND BEARING PRESSURE:**

(UNLADEN), ZERO PENETRATION — .89 PSI

(UNLADEN), 7" PENETRATION — .71 PSI

**TRACK DIMENSIONS: (X4)**

**WIDTH:** 28" **LENGTH:** 92"

**TURN RADIUS:** 20' 6"\*

**GROUND CLEARANCE:** ZERO PEN., 14 1/2"

**ENGINE:** CHRYSLER INDUSTRIAL V-8, 440 C.I.D.

**OPTIONAL ENGINES:** 4-53 INDUSTRIAL DETROIT

DIESEL/ 4-53T DETROIT DIESEL FACTORY  
TURBOCHARGED (ALTITUDE COMPENSATED)

6.354 PERKINS DIESEL/ T6.354 PERKINS  
DIESEL FACTORY TURBOCHARGED  
(ALTITUDE COMPENSATED)

V-378-C CUMMINS DIESEL, 145 H.P. / VT-378-C  
CUMMINS 170 H.P. FACTORY TURBOCHARGED  
(ALTITUDE COMPENSATED) OR VT-378-C 155 H.P.

**TRANSMISSION:** N.P.G. 542 MANUAL 5 SPD., 1 REV.

**OPTIONAL TRANSMISSION:** ALLISON AT-545 AUTO.  
4 SPD., 1 REV.

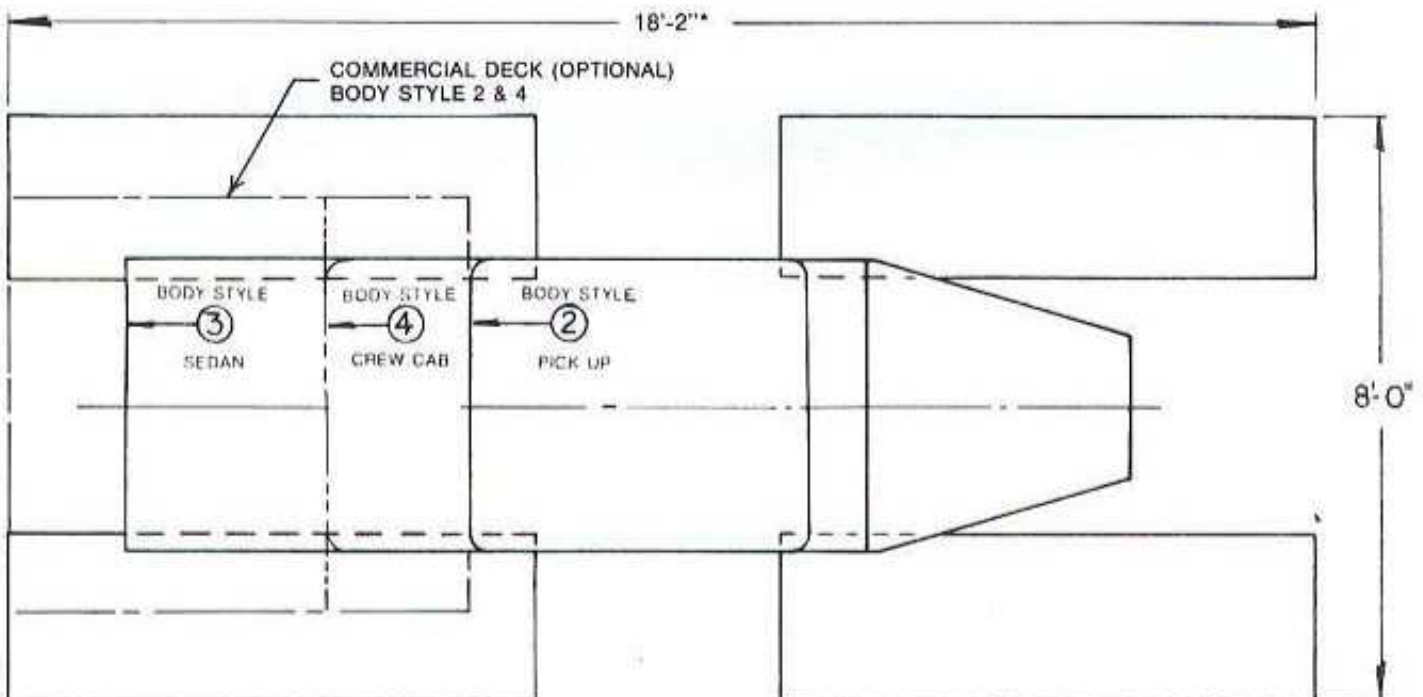
**FUEL CAPACITY:** 49 U.S. GALLONS

\*EXCEPT MODELS WITH CUMMINS DIESEL ENGINE

## STANDARD EQUIPMENT

HYDRAULIC FOOT BRAKE  
MECHANICAL PARKING BRAKE  
HYDRAULIC STEERING  
FULL ENGINE INSTRUMENTS  
ELECTRIC FUEL PUMP  
H.D. FUEL FILTER  
CAB HEATER - 36,000 B.T.U.  
FRONT DEFROSTER W/ADJ. OUTLETS  
PERSONNEL ASSIST HANDLES  
DUAL WINDSHIELD WIPER SYSTEM  
DUAL HEADLAMPS  
SEALED BEAM BACKUP LIGHT  
FRONT BUCKET SEATS  
DRIVER SEAT BELT  
DUAL ELECTRIC HORNS  
CAB ENTRY STEPS  
COOLANT RECOVERY SYSTEM  
R.O.P.S. TO S.A.E. J-395A  
LOCKING DOOR HANDLES  
ACRYLIC ENAMEL PAINT "OMAHA ORANGE"  
52" INSULATED CAB WITH MIRRORS/DOME LIGHT

SEE PRICE SHEET FOR OPTIONAL EQUIPMENT AND PRICES.





**TUCKER**

**SNO-CAT**

**CORP.**

MEDFORD, OREGON



**Specifications: RUBBER BELTED SNO-CAT 1700 SERIES**



THE SIMPLICITY AND DURABILITY OF THE 1700 SERIES TUCKER SNO-CAT MAKES IT THE CHOICE OF INDUSTRIAL USERS AND A GROWING NUMBER OF SKI AREAS. MANY FEATURES ARE AVAILABLE TO ADAPT THIS SERIES SPECIFICALLY TO YOUR JOB, AS SHOWN BY THE ABOVE 1742-WT.

THIS HEAVY-DUTY SNO-CAT WITH ITS 38" WIDE TRACKS IS ESPECIALLY DESIGNED AS A TOWING VEHICLE. IT IS REPORTED TO BE 30% FASTER THAN COMPETITIVE VEHICLES IN ITS CLASS, MAKING IT AN IDEAL MACHINE FOR YOUR GROOMING NEEDS.

---



# 1700 SERIES

## SPECIFICATIONS

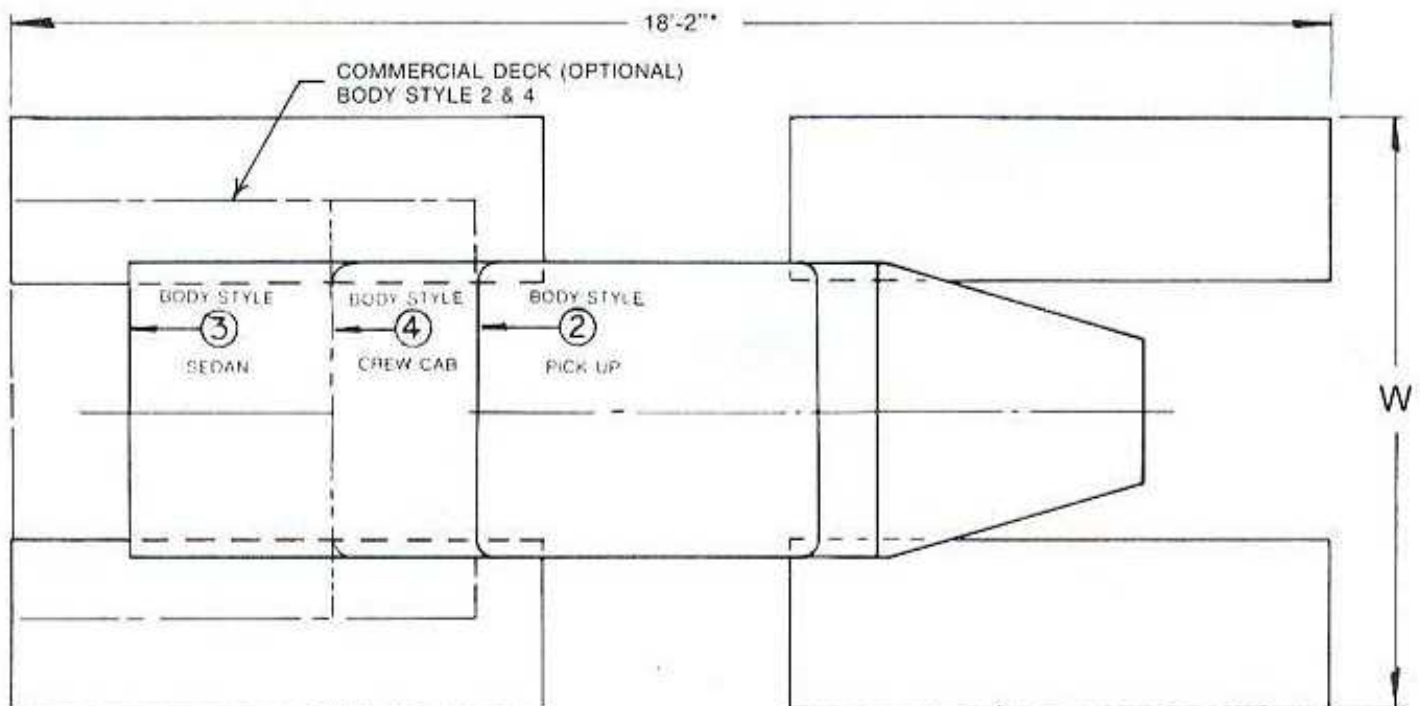
## STANDARD EQUIPMENT

	Standard	Wide Track
<b>DIMENSIONS</b>		
<b>LENGTH:</b>	18' 2"	18' 2"
<b>WIDTH:</b>	8' 0"	9' 9"
<b>HEIGHT:</b>	7'10"	7'10"
<b>WEIGHT: (UNLADEN)</b>	8410-8630#	9290-9510#
<b>PASSENGERS:</b>	2-14	2-14
<b>LOAD RATING:</b>	2300-3500#	2300-3500#
<b>GROUND BEARING PRESSURE:</b>		
(UNLADEN), ZERO PENETRATION	1 p.s.i.	.82 p.s.i.
(UNLADEN), 7" PENETRATION	.82 p.s.i.	.66 p.s.i.
<b>TRACK DIMENSIONS: (X4)</b>	28" x 92"	38½" x 92"
<b>TURN RADIUS:</b>	20' 6"	20' 6"
<b>GROUND CLEARANCE: ZERO PEN.</b>	14½"	14½"
<b>ENGINE: CHRYSLER INDUSTRIAL V-8, 440 C.I.D.</b>		
<b>OPTIONAL ENGINES: 4-53 INDUSTRIAL DETROIT</b>		
DIESEL/ 4-53T DETROIT DIESEL FACTORY		
TURBOCHARGED (ALTITUDE COMPENSATED)		
V-378-C CUMMINS DIESEL, 145 H.P./VT-378-C		
CUMMINS 155 H.P. FACTORY TURBOCHARGED		
(ALTITUDE COMPENSATED) OR VT-378-C 170 H.P.		
<b>TRANSMISSION: N.P.G. 542 MANUAL 5 SPD., 1 REV.</b>		
<b>OPTIONAL TRANSMISSION: ALLISON AT-545 AUTO,</b>		
4 SPD., 1 REV.		
<b>FUEL CAPACITY: 49 U.S. GALLONS</b>		
80 U.S. GALLONS (OPT.)		

HYDRAULIC FOOT BRAKE  
 MECHANICAL PARKING BRAKE  
 HYDRAULIC STEERING  
 FULL ENGINE INSTRUMENTS  
 ELECTRIC FUEL PUMP  
 H.D. FUEL FILTER  
 CAB HEATER — 36,000 B.T.U.  
 FRONT DEFROSTER W/ADJ. OUTLETS  
 PERSONNEL ASSIST HANDLES  
 DUAL WINDSHIELD WIPER SYSTEM  
 DUAL HEADLAMPS  
 SEALED BEAM BACKUP LIGHT  
 FRONT BUCKET SEATS  
 DRIVER SEAT BELT  
 DUAL ELECTRIC HORNS  
 CAB ENTRY STEPS  
 COOLANT RECOVERY SYSTEM  
 R.O.P.S. to S.A.E. J-395A  
 LOCKING DOOR HANDLES  
 PAINT ACRYLIC ENAMEL "OMAHA ORANGE"  
 52" INSULATED CAB WITH MIRRORS/DOME LIGHT

## PERFORMANCE DATA

	Standard	Wide Track
<b>Climbing Ability</b>		
Dirt or Hard Snow	80% slope	90% slope
Soft Snow	60% slope	70% slope
<b>Sidehilling Ability</b>	75% of climbing ability	Same
<b>Speed Maximum</b>	14.22 mph	Same





**TUCKER**

**SNO-CAT**



## THE MID ENGINE LINE

### UP FRONT CAB

—For Full Visibility of Implements

### FOUR TRACK DRIVE

—For Maximum Bougn Terrain Traction

### BALANCED WEIGHT DISTRIBUTION

—For Better Traction

### ... SIMPLE TRUCK TYPE AXLES AND DRIVE TRAIN

—For Assured Parts Availability

### ... FRONT & REAR HYDRAULIC STEERING

—For Minimum Disturbance of Ground Cover

### ... FULL COMPONENT ACCESSIBILITY

—For Ease of Maintenance

### AVAILABLE IN YOUR CHOICE OF MODELS

542 ME  
1342 ME  
1542 ME  
1642 ME

1742 ME  
1742 ME W.T.-38-5 (Wide Track)  
1742 ME W.T.-38-6 (Wide Track)  
1742 ME W.S. (Wide Stance)



## STANDARD EQUIPMENT

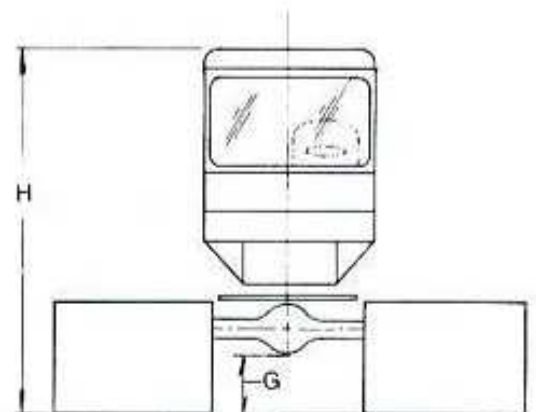
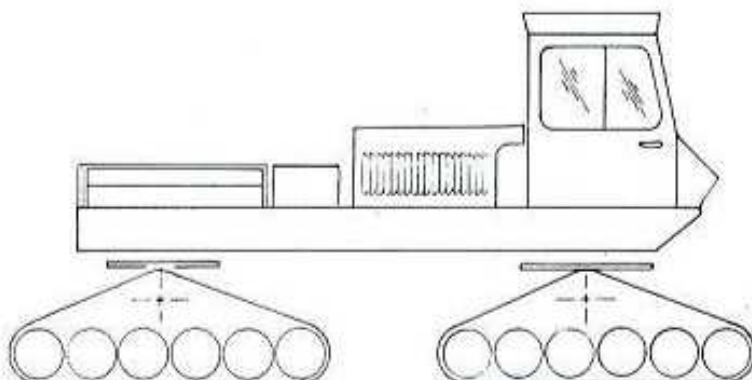
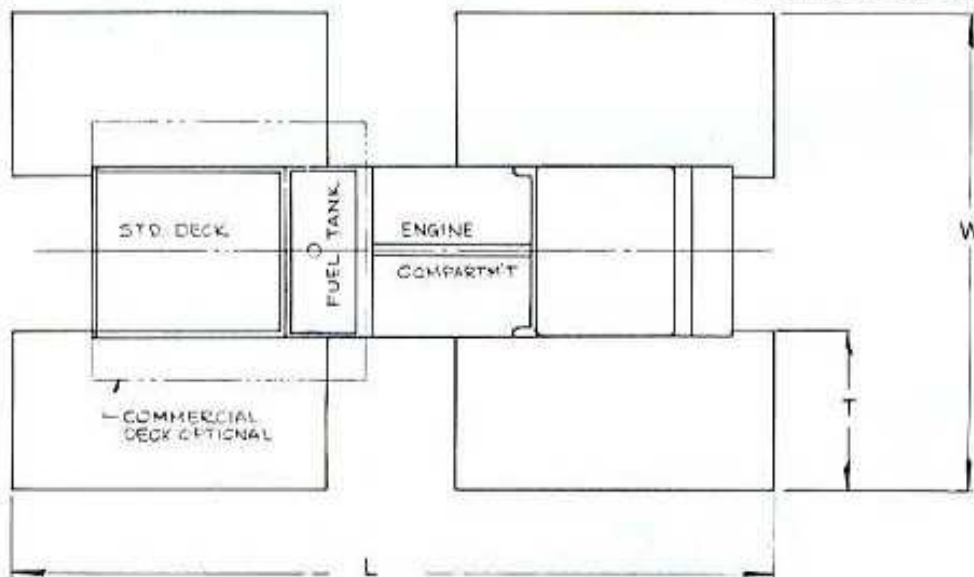
- BOSTROM VIKING T-BAR® OPERATOR SEAT
- INDUSTRIAL WIPERS & DEFROSTERS
- FULL MONITOR INSTRUMENTATION
- EMERGENCY & SERVICE BRAKES
- HYDRAULIC HEAT EXCHANGER
- PASSENGER BOSTROM BUCKET SEAT
- SWIVEL-TYPE PINTLE TOW HOOK
- 52" WIDE CAB
- 49 U.S. GAL. FUEL TANK
- DUAL HEADLAMPS
- BACKUP WARNING DEVICE
- INTEGRAL ROLL BAR
- IND. STD. HYD. CONNECTORS
- OMAHA ORANGE ACRYLIC FINISH
- HYDRAULIC TURNTABLE STEERING
- CAB COMFORT HEATER
- AUTOMATIC TRANSMISSION(AT 545)

### GASOLINE OR DIESEL ENGINE OPTIONS

## — SPECIFICATIONS —

MID ENG. MODEL	L	H	W	T	WT. # EMPTY	LOAD # RATING	TURN RAD FT.	TRACK AREA (TOTAL) 7" PENN.
542 ME	17'-3"	8'-1"	8'-0"	28"	7550	1900	19'	9,180 Sq. In.
1342 ME	15'-11"	7'-10"	8'-0"	28"	6620	1900	19'	7,784 Sq. In.
1542 ME	16'-5"	8'-1"	8'-0"	28"	7020	1900	19'	8,512 Sq. In.
1642 ME	17'-10"	8'-1"	8'-0"	28"	7950	1900	19'	10,304 Sq. In.
1742 ME	18'-2"	8'-3"	8'-0"	28"	9090	2300	23'	10,304 Sq. In.
1742 ME W.T.-38-5 (5WHL)	16'-10"	8'-3"	9'-9"	38"	9620	2300	23'	11,704 Sq. In.
1742 ME W.T.-38-6(6WHL)	18'-2"	8'-3"	9'-9"	38"	9970	2300	23'	14,168 Sq. In.
1742 ME Wide Stance	18'-2"	8'-3"	8'-10"	28"	9240	2300	23'	10,304 Sq. In.

"G" GROUND CLEARANCE 15" EXCEPT 1342 ME = 12





# TUCKER SNO-CAT

CORP.

MEDFORD, OREGON



## 2000 SERIES





# 2000 SERIES

## SPECIFICATIONS 2000B-28-5-1.5

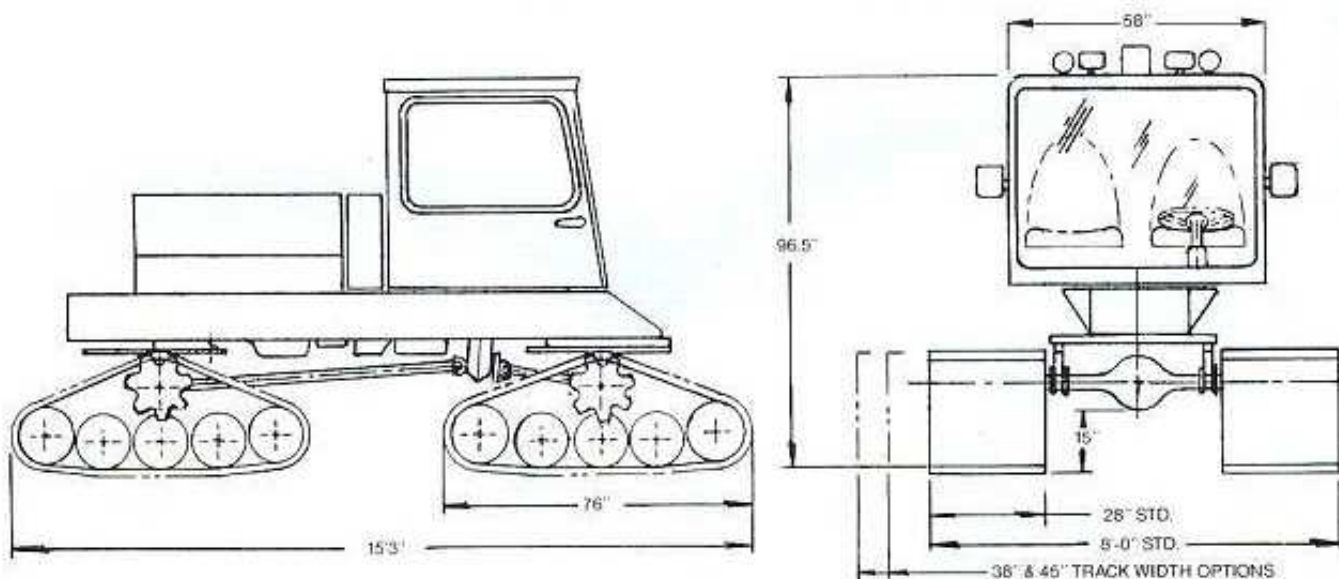
LENGTH: 15'3" WIDTH: 96" HEIGHT: 96½"  
WEIGHT: 7,000 LBS.  
PASSENGERS: 2 - 4  
LOAD RATING: 1,900 LBS.  
GROUND BEARING PRESSURE: (PS.I)  
(UNLADEN) ZERO PENETRATION - 1.05 PSI  
(UNLADEN) 7" PENETRATION - .82 PSI  
TRACK DIMENSIONS: (x4)  
WIDTH: 28" LENGTH: 76"  
TURN RADIUS: 18'3"  
GROUND CLEARANCE: 15"  
ENGINE: CHRYSLER INDUSTRIAL V-8,  
318 C.I.D. 140 H.P.  
TRANSMISSION: ALLISON AT 545  
OR CHRYSLER A727  
FUEL CAPACITY: 31 U.S. GALLONS  
60 U.S. GALLONS (OPT.)  
80 U.S. GALLONS (OPT.)

## STANDARD EQUIPMENT

HYDRAULIC FOOT BRAKE  
MECHANICAL PARKING BRAKE  
HYDRAULIC STEERING  
FULL ENGINE INSTRUMENTS  
ELECTRIC FUEL PUMP  
H. D. FUEL FILTER  
CAB HEATER - 36,000 B.T.U.  
FRONT DEFROSTER W/ADJ. OUTLETS  
PERSONNEL ASSIST HANDLES  
DUAL WINDSHIELD WIPER SYSTEM  
DUAL HEADLAMPS  
SEALED BEAM BACKUP LIGHT  
FRONT BUCKET SEATS  
FULL COMPLEMENT OF SEAT BELTS  
DUAL ELECTRIC HORNS  
COOLANT RECOVERY SYSTEM  
R. O. P. S.  
LOCKING DOOR HANDLES  
ACRYLIC ENAMEL PAINT  
58" INSULATED CAB  
MIRRORS  
DOME LIGHT

## — OPTIONS —

ENGINE: GAS - CHRYSLER 360, 155 H.P.  
FORD 460, 195 H.P.  
DIESEL - CUMMINS 4 BTA, 116 H.P.  
CUMMINS 6 BT, 152 H.P.  
DETROIT 8.2T LITER, 205 H.P.  
TRACK: 38" AND 45" WIDE WITH 4, 5, OR 6-WHEEL CARRIERS  
GROOMING EQUIPMENT: TUCKER 8'6" U-BLADE 6-WAY  
TUCKER 10' U-BLADE 6-WAY  
TUCKER POWER TILLERS 8', 10' and 11' WIDE  
TUCKER NORDIC TRACK SETTER SINGLE OR DUAL



ALL RIGHTS RESERVED - PRICES AND SPECIFICATIONS SUBJECT TO CHANGE WITHOUT NOTICE

TUCKER SNO-CAT CORP. • P.O. BOX 1529 • MEDFORD, OR 97501

503-779-3731



TUCKER

# SNO-CAT

Gives You **DEPENDABLE**  
*Over-Snow Transportation*

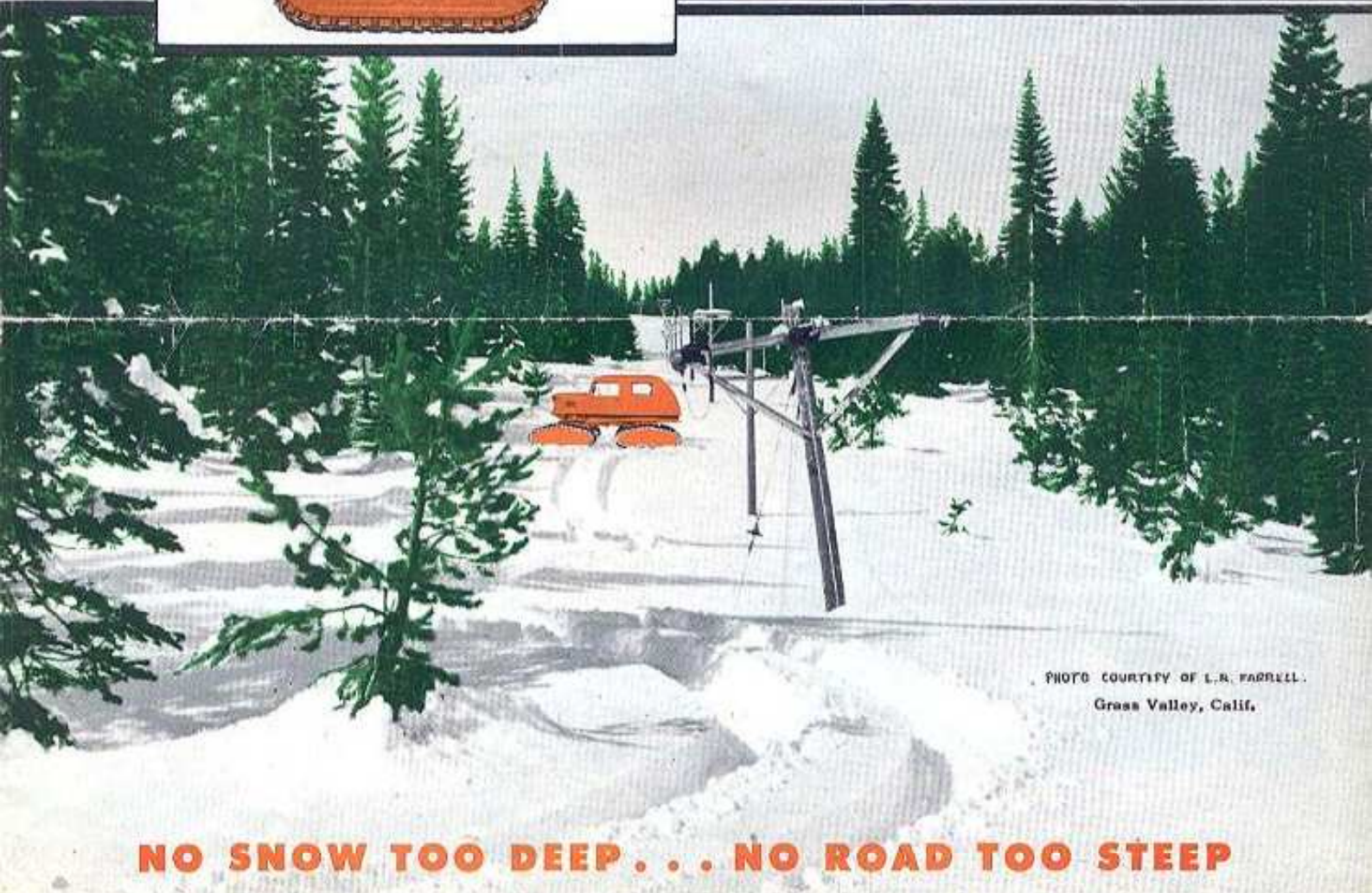


PHOTO COURTESY OF L.R. FARRELL.  
Grass Valley, Calif.

**NO SNOW TOO DEEP . . . NO ROAD TOO STEEP**



# HAUL MEN AND EQUIPMENT WITH T

## "THE SNO-CAT--

Prior to the Big Storm of 1952 there had been much speculation among company personnel in Drum Division as to the merits of the Sno-Cat.

Well, the Big Storm is over. We had two Sno-Cats borrowed from other Divisions and we purchased another for use in Nevada District. We put them through every conceivable type of snow and over some of the wildest country in the United States. They came through with flying colors. **They are here to stay because they will work.**

In case you do not know, Sno-Cats have been called Weasels, Snow Mobiles, Snow Go's and several other names, but such names are misnomers. All of the foregoing machines have great value at the right time, but for real all around performance, day or night, soft snow or hard, give us the good old Tucker Snow-Cat."

The above is reprinted unchanged from a recent newsletter published by the largest Public Utility in California. This firm has 23 Tucker Sno-Cats in use.



### SNO-CATS FOR SEARCH AND RESCUE.

Recently when a crack western streamliner became snowbound at Donner Summit in the Sierras, SNO-CATS were the only motor vehicles successfully to render vital assistance by providing medical supplies and food and performing other rescue work.

## PRINCIPLE OF THE UNIQUE SNO-CAT TRACTION

The Sno-Cat's exclusive, patented sliding pontoons with positive traction are the only basically sound principle ever devised for over-snow travel. In 31 years of research we have proven that there is no better way to move weight over snow than to slide it on runners. This basic operating principle of the Sno-Cat is as amazingly simple as it is efficient.

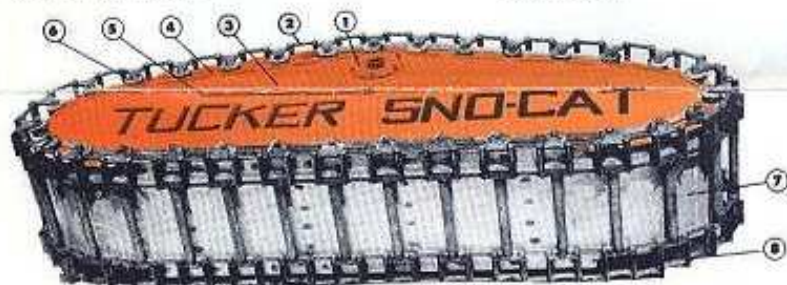
The broad pontoon runners slide directly on the snow. Between each track link is an open space through which the snow packs up against the bottom of the pontoon shoe, providing a compressed surface on which the pontoon slides.

The sharp propelling grouser links, which are embodied in the compressed snow under each pontoon, provide vital, positive traction in all types of snow.

When power is applied to the driving sprocket, the link track is drawn around the pontoon but since the grouser links are firmly held in the compressed snow and cannot move, the exerted force slides the frictionless pontoon along the snow surface.

Sno-Cat track links cannot clog with snow or ice to prevent traction—cannot come off while in use. The flat side walls of pontoons prevent side hill slippage. No open boggy wheels to foul up when traversing side slopes.

1. Dual sprocket driving drum, housed within pontoon compartment
2. Open links cannot clog with ice or snow
3. Strongly reinforced snow-tight pontoon
4. Hardened tool steel track rails
5. Sprocket compartment drain
6. Exclusive, patented track floats on flanged heavy duty ball bearings. These flanged rollers and rails prevent throwing the track at any time



7. Reinforced stainless steel bottom shoe
8. Engineered, all purpose alloy steel grouser links provide sharp edges for ice, and ample surfaces for positive traction in snow.

## ... Introducing the All-Track Sno-Cat "Kitten"

Realizing the need of our customers for a low-priced SNO-CAT our Engineering Staff designed and developed this model, only 47 $\frac{3}{4}$ " wide by 83" long and capable of being carried on a one-half ton pickup. It will carry two passengers and an additional 1000 lb. trailer load. The Kitten will climb successfully over high drifts, steep grades and side slopes, on powdery, heavy, crusted, or soft sticky snow and ice. Sno-Kittens are the answer to oversnow transportation for trappers, miners, sportsmen, winter resorts, skiing parties, stock raisers, ranchers and mail carriers, and meet full requirements of any group desiring snow transportation for a minimum expenditure.

47 $\frac{3}{4}$ " Wide x 83" Long





# TUCKER SNO-CAT AND SNO-KITTEN



**SNO-CATS—A WINTER RESORT NECESSITY.** Sno-Cats provide many diversified pleasure opportunities and service for Winter Resort Guests and Skiers, and are especially valuable for conditioning and care of ski courses.

SEE TESTIMONIALS  
ON BACK PAGE



**TROUBLE-SHOOTING COMPLETED AHEAD OF SCHEDULE.** When the going is toughest, mountain men turn to their best friend, the Tucker Sno-Cat. These four-pontoon, full-track vehicles carry men and equipment over the snow—in minutes—to trouble spots it might otherwise take days to reach.



**'SNO FUN WITHOUT A SNO-CAT.** The Tucker Sno-Cat transports entire crews to isolated places over any snow condition in a few hours where normally it would take days of tedious and dangerous travel by other means. The Sno-Cat is a MUST for all types of outdoor industry in snow country!

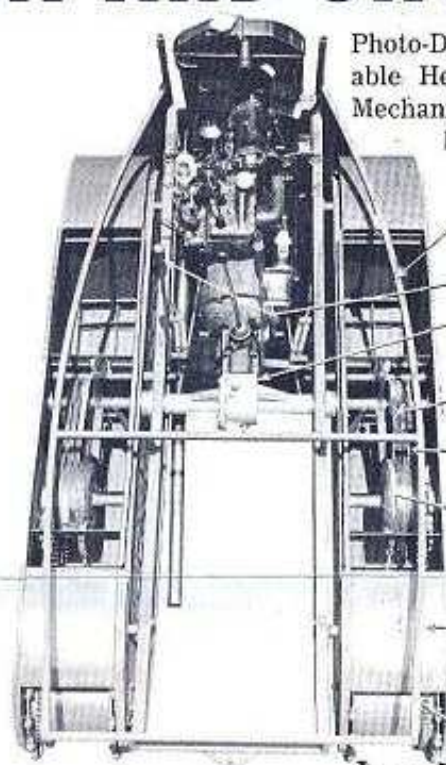
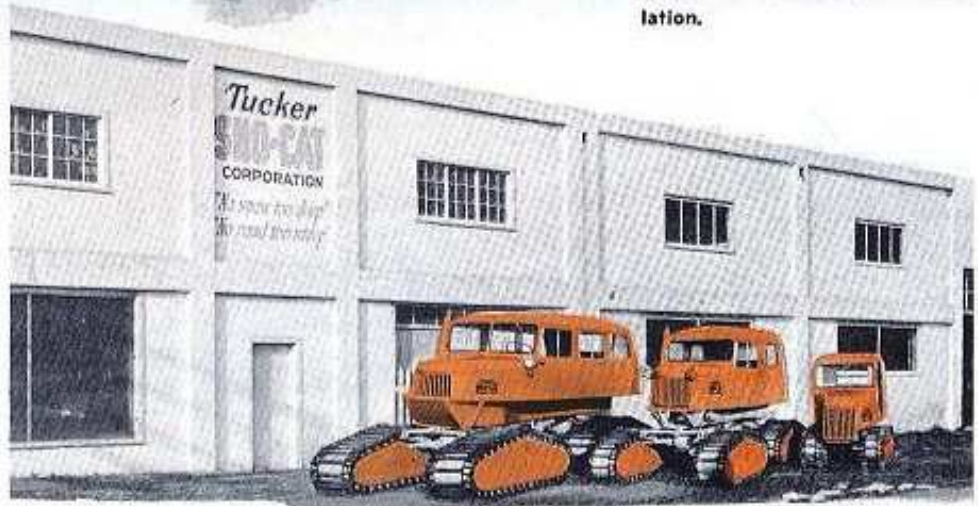


Photo-Diagram Illustrating the Dependable Heavy-Duty Steering and Driving Mechanism of the New All-Track SNO-KITTEN

1. Welded Tubular Frame
2. Steering Levers
3. 11 to 20 Bevel Gear
4. Triple Nylon Drive "B" Belts
5. Idler Pulley Controls Steering
6. Nylon Brake Belt for Short Turning Radius
7. Track and Pontoon Width and Length 133 1/4"x82"
8. Chain Drive
9. Dual Sprockets



**THE VERSATILE SNO-KITTEN SIDEHILLING UP A 70% GLACIER SLOPE.** The Sno-Kitten is the newest addition to the dependable Tucker line of Sno-Cats, filling a long-felt need by individuals and groups for overcoming winter isolation.



**TUCKER SNO-CATS' BIG THREE OF THE PRODUCTION LINE.** Models 743, 443 and 222 comprise the main production models in Tucker's Sno-Cat modern plant, ranging from the small kitten to the huge freighter . . . a size for every need.



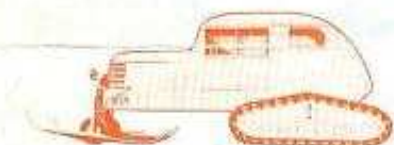
## Specifications . . .

# TUCKER *Sno-Cats* AND TRAILERS

# AND *Sno-Kittens*



KITTEN—No. 222 Aluminum Top



UTILITY—No. 423 Sedan



UTILITY DOUBLE DRIVE—No. 443 Sedan



FREIGHTER DOUBLE DRIVE—No. 743



TRAILER—No. 925 Open



TRAILER—No. 949  
Special 25-Passenger

### STOCK MODELS

**KITTEN, Ford Anglia or Aroo Jet Engine**  
No. 222, 2-pass., with Windshield and Aluminum Top.\*\*

**UTILITY, 95-h.p. Chrysler Engine**  
No. 421, 2-pass., Canopy Top, Windshield, no doors.  
No. 423, 2-pass., \*3-dr. Sedan.  
(Rear compartment on No. 423 will accommodate seats for two more.)

**UTILITY DOUBLE DRIVE, 95-h.p. Chrysler Engine**

No. 443, 6 to 8-pass., \*3-dr. Sedan.

**FREIGHTER DOUBLE DRIVE, 180-h.p. Chrysler V8 Engine**

No. 743, 15-pass., \*3-dr. Sedan.

**TRAILERS, Incl. ground wheels**

No. 925, ½ ton, Open

No. 926, 1 ton, Open

No. 927, 1½ ton, Open

No. 948, 2 ton, Open

No. 949, 25-pass., Special

(Special Trailers Made to Order)

\*3-Dr. Sedans have rear door that will accommodate a stretcher.

\*\* Aluminum doors available on Kitten at extra cost.

ALL PRICES F.O.B. MEDFORD, OREGON

### SPECIFICATIONS

SNO-CATS	No. 222	No. 423	No. 443	No. 743
Body, Aluminum Type	Illustrated	Sedan	Sedan	Sedan
Passenger Capacity	2	2-4	6-8	12-15
Load Capacity	650 lbs.	800 lbs.	1350 lbs.	2300 lbs.
Trailer Capacity	1000 lbs.	1000 lbs.	2500 lbs.	5000 lbs.
Gas Capacity	15 gal.	18 gal.	35 gal.	50 gal.
Speeds	3&1 rev.	3&1 rev.	3&1 rev.	Automatic
Horsepower	25	95	95	180
Mi. per gallon	10-12	6-8	5-6	3-5
Hickory Ski Size	None	⅞ x9x90"	None	None
Pontoon & Track	13¾"x82"	18x84"	18x84"	24x103"
Turning Radius	Own Length	25-30'	18'	28'
Overall Width	47½"	6'3"	6'3"	7'5"
Overall Length	83"	17'4"	15'10"	20'
Overall Height	70"	6'5"	7'5"	7'6"
Weight	1395 lbs.	2500 lbs.	3990 lbs.	7000 lbs.

Cruising speed, all models . . . . . 10 to 15 m.p.h.

Differential, all models . . . . . Dodge Truck

Transmission in Sno-Cats . . . . . Dodge Truck

Transmission in Kitten . . . . . Ford or Warner

TRAILERS	No. 925	No. 926	No. 927	No. 948	No. 949
Bed Size	48"x72"	48"x80"	48"x96"	72"x12'	72"x12'
Capacity	½ ton	1 ton	1½ ton	2 ton	25 pass.
No. of Skis	2	2	2	4	4
Overall Height	36"	36"	36"	36"	7'4"
Overall Width	6'2"	6'2"	6'2"	7'	7'
Weight	250 lbs.	275 lbs.	325 lbs.	600 lbs.	850 lbs.

All Sno-Cats and Trailers are primed and finished in orange enamel

Trade Mark SNO-CAT U. S. Registration No. 425928.  
U. S. Patents 2284075, 2341000, 2378111, 2433173, 2561716, 2598863.  
Canadian Patents 343847, 422055, 451263, and other patents pending.

## TUCKER SNO-CAT CORPORATION

MEDFORD, OREGON

### ASK THE MEN WHO KNOW!

Fritzie Baer of the million dollar Belknap Mts. Recreation area . . . "The Tucker Sno-Cat is the best piece of snow maintenance equipment that we or any ski area can have. Our Sno-Cat more than paid for itself in the first month."

Ralph Bean of Waterville Valley Resort says: ". . . our main piece of winter locomotion. We and

our guests couldn't do without it. More Sno-Cats will certainly always be in our future!"

Big Bromley's Fred Pabsl wants you to know that ". . . Old Man Tucker really has something, and I take off my hat to him."

Dick Parker from New Hampshire's Mt. Sunapee, "We know now we just couldn't get along

without Sno Cats. . . . There's nothing like 'em for work in the snow."

Mt. Cannon's Roger Peabody has this to say: "With our double drive Sno-Cat we can do in 5 hours, work that took 7 men 3 days to do . . . there is absolutely nothing that can take its place on tough terrain, thru the deep white stuff."



# Prices and Specifications -- January 1, 1956

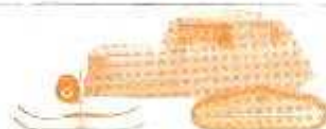
Supersedes all previous issues. Prices and specifications subject to change without notice.

## 1956 TUCKER *Sno-Cats* AND TRAILERS

### STOCK MODELS



KITTEN—No. 222 Aluminum Top



UTILITY—No. 423 Sedan



UTILITY DOUBLE DRIVE—No. 443 Sedan



FREIGHTER DOUBLE DRIVE—No. 743



TRAILER—No. 925 Open  
(Models 926 and 927 similar)



TRAILER—No. 949  
Special 25-Passenger

**KITTEN, Ford Anglia Engine**  
No. 222, 2-pass., with Windshield,  
Aluminum Top and Doors. . . . \$3311.00

**UTILITY, 95 hp Chrysler Engine**  
No. 423, 2-pass., \*3-dr. Sedan. . . . 3737.25  
(Rear compartment on No. 423 will  
accommodate seats for two more.)

**UTILITY DOUBLE DRIVE, 95hp**  
Chrysler Engine  
No. 443, 6 to 8 pass., \*3-dr. Sedan. 7312.00

**FREIGHTER DOUBLE DRIVE, 180-235hp**  
Chrysler V8 Engine  
No. 743, 15-pass., \*3-dr. Sedan \$15,168.00†

**TRAILERS, Incl. ground wheels**  
No. 925, ½ ton, Open. . . . . \$ 347.00  
No. 926, 1 ton, Open. . . . . 416.00  
No. 927, 1½ ton, Open. . . . . 602.00  
No. 948, 2 ton, Open. . . . . 1628.00  
No. 949, 2½-pass., Special. . . . . 2688.00  
(Special trailers made to order.)

\*3-dr. Sedans have a rear door that  
will accommodate a stretcher.  
†Subject to equipment.

ALL PRICES ARE F.O.B., MEDFORD, OREGON

### SPECIFICATIONS

SNO-CATS	No. 222	No. 423	No. 443	No. 743
Body, Aluminum-Type	Illustrated	Sedan	Sedan	Sedan
Passenger Capacity	2	2-4	6-8	12-15
Load Capacity	650 lbs.	800 lbs.	1350 lbs.	2300 lbs.
Trailer Capacity	1000 lbs.	1000 lbs.	2500 lbs.	6000 lbs.
Gas Capacity	15 gal.	18 gal.	35 gal.	50-65 gal.†
Speeds	3&1 rev.	3&1 rev.	3&1 rev.	4 and 5 speeds†
Horsepower	25	95	95	180-235†
Mi. per gallon	10-12	6-8	5-6	2-4
Hickory Ski Size	None	¾x9x90"	None	None
Pontoon & Track	18"x85"	18x84"	18x84"	24x103"
Turning Radius	Own Length	25.30'	18'	28'
Overall Width	56"	6'3"	6'3"	7'5"
Overall Length	92"	17'4"	15'10"	20'
Overall Height	70"	6'5"	7'5"	7'9"
Weight	1425 lbs.	2500 lbs.	3990 lbs.	7200 lbs.

Cruising speed, all Models—10 to 15 m.p.h.

Differential—Dodge Truck in Sno-Cat  
Anglia in Sno-Kitten

Transmission in Sno-Cats—Dodge Truck  
in Kitten—Anglia

TRAILERS	No. 925	No. 926	No. 927	No. 948	No. 949
Bed Size	48"x72"	48"x80"	48"x96"	72"x12'	72"x12'
Capacity	½ ton	1 ton	1½ ton	2 ton	25 pass.
No. of Skis	2	2	2	4	4
Overall Height	36"	36"	36"	36"	7'4"
Overall Width	6'2"	6'2"	6'2"	7'	7'
Weight	250 lbs.	275 lbs.	325 lbs.	600 lbs.	850 lbs.

All Sno-Cats and Trailers are primed and finished in orange enamel  
with color-harmonized heavyweight plastic upholstery.

**TUCKER SNO-CAT CORPORATION**  
MEDFORD, OREGON