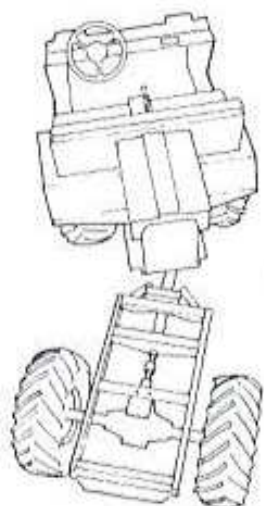


PUG

the true
all-terrain vehicle



There's no limit to the places you can go when you own a PUG. Get off the roads that limit your hunting, fishing and camping and go to the places where *you want to go*. There are many so-called all terrain vehicles on the market but only PUG lives up to that reputation because it is specifically engineered to travel safely in areas where no roads exist.



Unique articulated body design.

The unique PUG design features a two-section body, each with its own differential and joined together with a specially designed universal joint. This allows each section to twist and turn freely over obstructions and rough terrain while all four wheels maintain constant traction.

**PUG goes where
you want to go!**



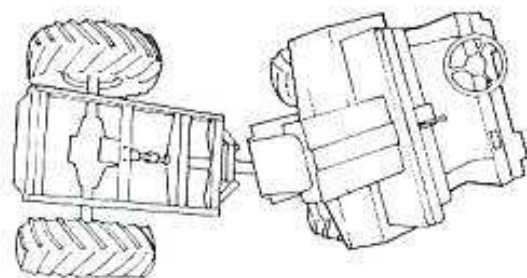
H. Picou 1997

PUG likes tough going!

Unique design enables the PUG to travel over obstacles easily.



There are lots of so-called *all terrain* vehicles but only PUG can prove its claim because only PUG is designed and built for that purpose.



PUG is the only vehicle built today with a fully powered front and rear unit, each with its own differential. It is linked together with a special type universal joint that swivels in any direction. This allows each section to twist and turn freely over obstacles and rough terrain while all four wheels maintain surface traction.



The powerful 16 H.P. Briggs & Stratton synchro balanced air cooled engine develops more torque and four-wheel traction power than any other vehicle in this horsepower range. The two-speed automotive type transmission eliminates clutching and shifting. The tight turning radius (10'6") enables the PUG to operate in areas "off limits" to most vehicles.

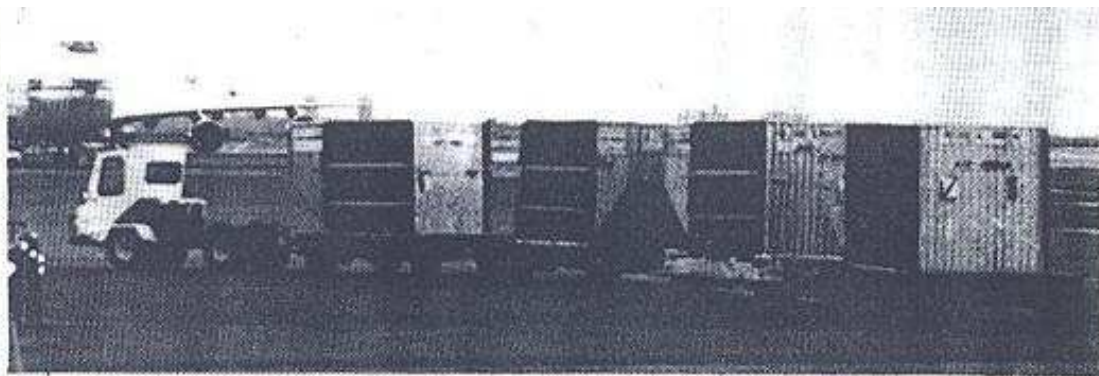
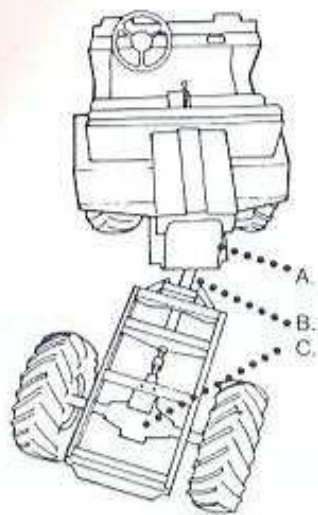
The makers of PUG offer a wide selection of optional equipment to suit your individual needs...platform and stake bodies, enclosed cabs, hydraulic dump bodies, grader blades, mowers, and even a snow thrower. Tell us your needs and we'll come up with an answer.

BRUCE MANUFACTURING CORP.

7450 France Avenue So., Minneapolis, Minn. 55435

REPRESENTED BY:





Power to spare!
Easy to handle!

Articulated body

- A. Engine and front wheel transmission
- B. Universal joint
- C. Rear wheel transmission



The powerful 16 H.P. synchro balanced Briggs & Stratton air cooled engine unleashes more torque and traction power per horsepower than any other vehicle now being commercially produced. With adequate traction surface, you can pull a ten-ton aircraft or a whole train of baggage carriers.

You make full use of the 4-wheel drive because PUG "keeps its feet on the ground" at all times. The unique PUG design features a two-section body, each with its own differential and joined together with a specially designed universal joint. This allows each section to twist and turn freely over obstructions and rough terrain while all four wheels maintain traction.

PUG is easy to handle because it has an automotive type steering sector by center articulation of the front and rear body sections. It has a variable speed torque converter clutch and a two-speed transmission. Big 26 x 12.00 tubeless Goodyear Terra Tires provide all-weather traction and a smooth ride. Hydraulic brakes assure quick, sure stops. Sealed beam headlights.

Many optional accessories and bodies are available to increase your use of your PUG.

ASK YOUR DEALER FOR A
NO-OBLIGATION DEMONSTRATION.

BRUCE MANUFACTURING CORP.
7450 France Ave. So., Minneapolis, Minn. 55435

REPRESENTED BY:

Does more jobs easier and better!



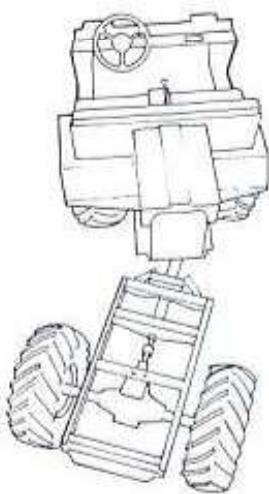
Versatility is PUG's second name. If there's a job to do, just call on the PUG. You can attach a harrow or chisel plow and till fields. Mount your spraying equipment on the rear section and you can move through your shrubs and plants a lot easier and faster. No need to own a special mower because you can attach a large size rotary to your PUG and do the job better.



The makers of PUG offer many accessories and various bodies which are designed to mount on the chassis without structural changes. You can buy dump bodies, trailers, grader blade assembly, snow plow, stake body, flatbed, a camper, hydraulic P.T.O. assembly, cab, and several other options.



PUG is powered by a 16 H.P. Briggs & Stratton synchro balanced 4-cycle engine which produces more torque and traction power per horsepower than any other vehicle now produced. You can climb grades up to 45 degrees with a full load, cross streams and drive through marshy areas without bogging down.



PUG is designed with a front and rear section, each with its own differential and linked together with a special universal joint. This allows each section to twist and turn freely over the roughest terrain while all four wheels maintain traction. It has a turning radius of 10'4". It is practically impossible to tip over in the PUG even in areas with boulders and ditches. This is the design that makes the PUG so versatile.

ASK FOR A DEMONSTRATION

REPRESENTED BY:

BRUCE MANUFACTURING CORP.

7450 France Ave. So.

Minneapolis, Minnesota 55435