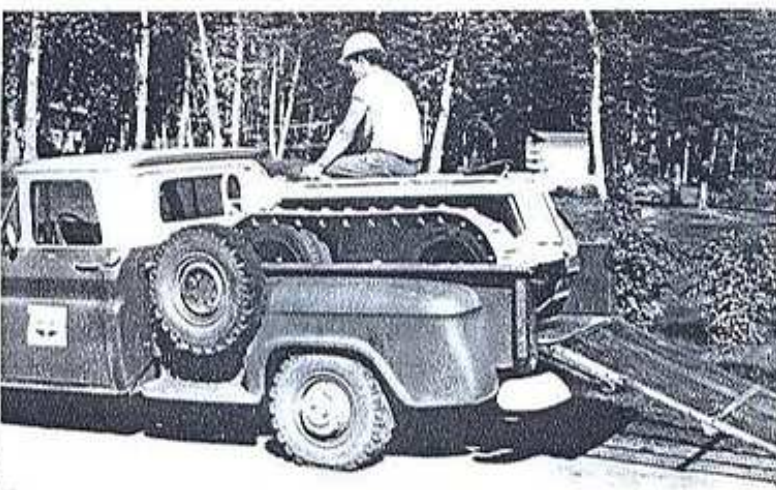
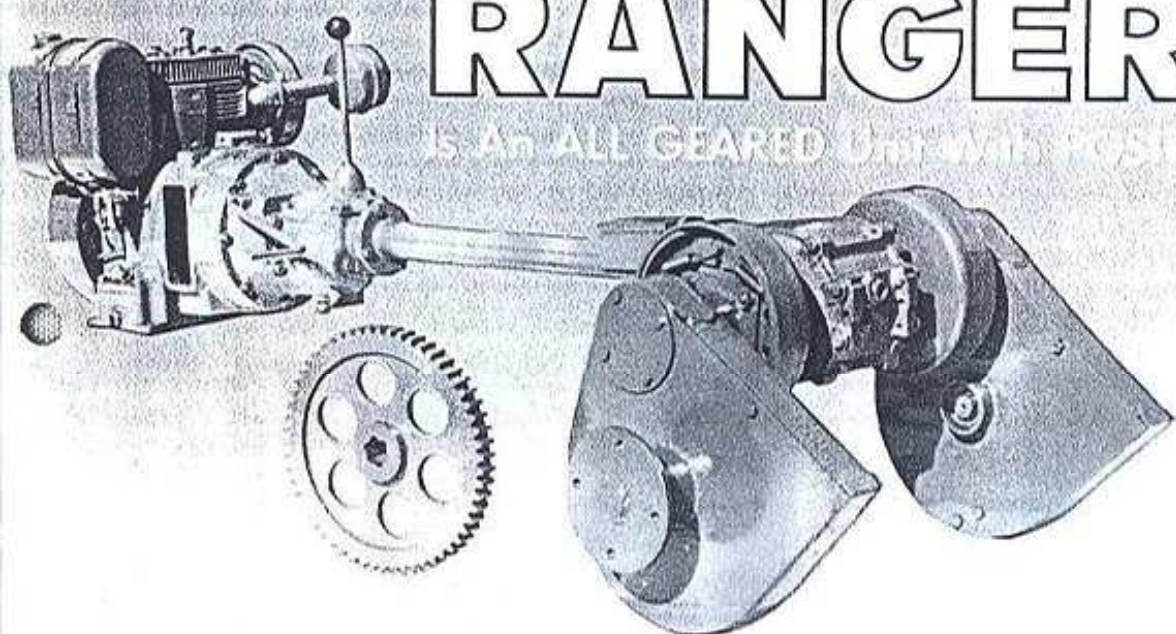
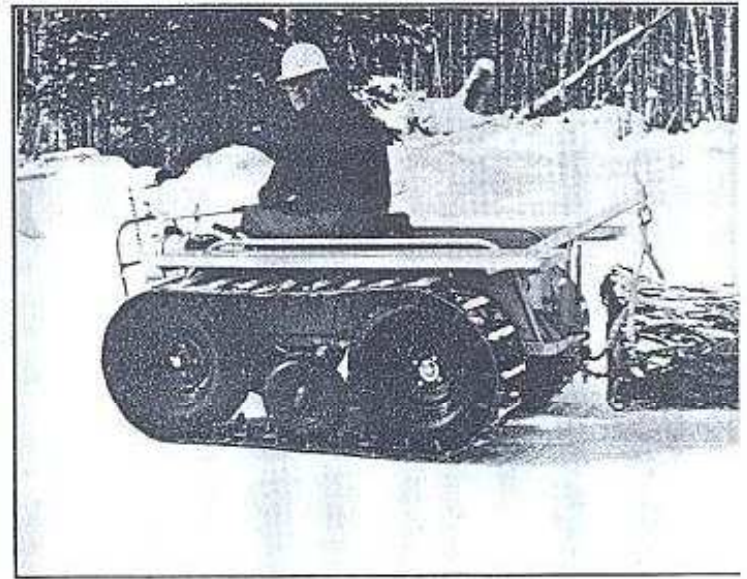
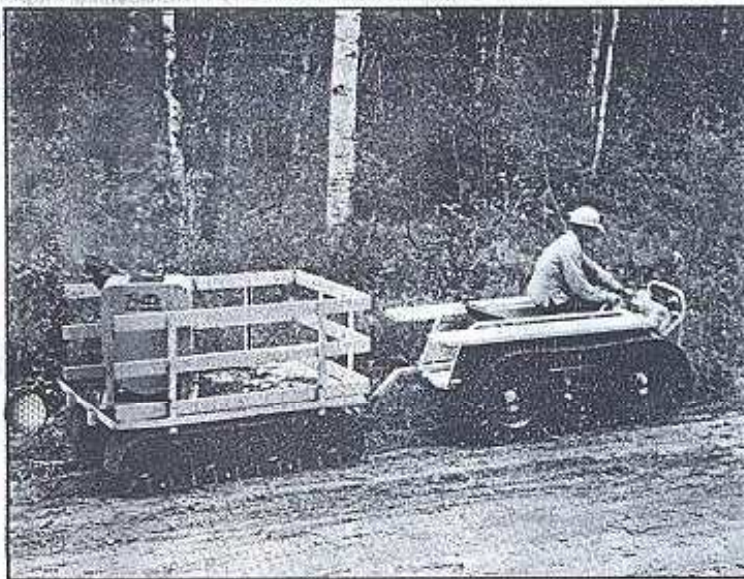
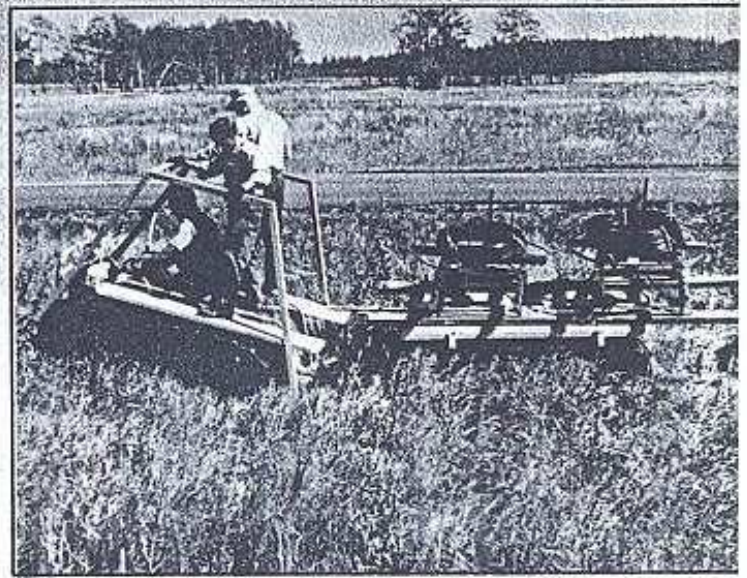


# RANGER X

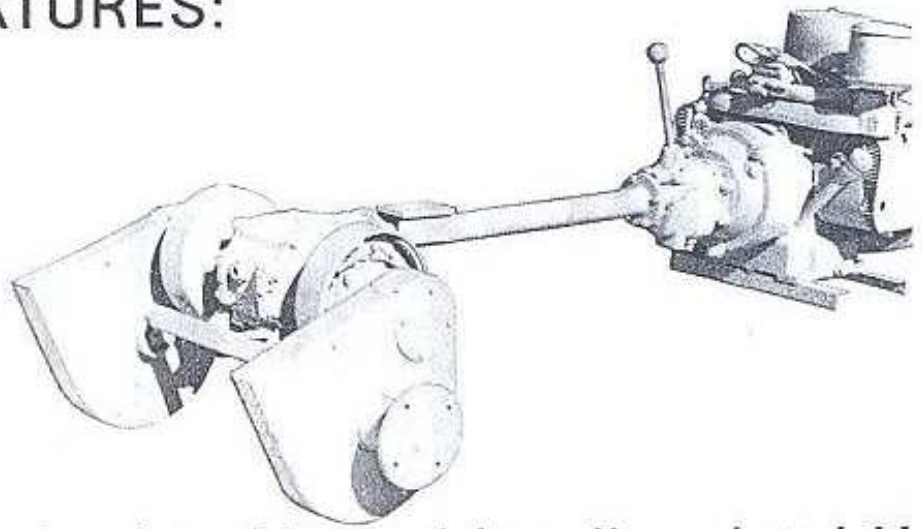
IS AN ALL GEARED UNIT WITH POSITIVE CLUTCH





## CONSTRUCTION FEATURES:

FERRET is a well-engineered, rugged and versatile machine – built for tough industrial uses. He has 16 inches of clearance underneath for driving through swamps and other rough terrain. FERRET is amazingly simple to operate and features a governed, wide-range speed control. Full power can be applied from the slowest crawl to top speed with either the 14 h.p. or 18 h.p. engine. The accompanying photograph illustrates the extra toughness and stamina built into every FERRET.



## FERRET is an all-g geared unit with positive disc clutch!!

- 14 or 18 h.p. Kohler engine with lighting alternator, rope or electric start.
- Automotive transmission, three speeds forward plus reverse.
- Large 9" internal expanding steering brakes.
- 6-1/2" automotive type clutch.
- Hypoid differential
- Heavy duty geared final drives with splined heat treated axles.

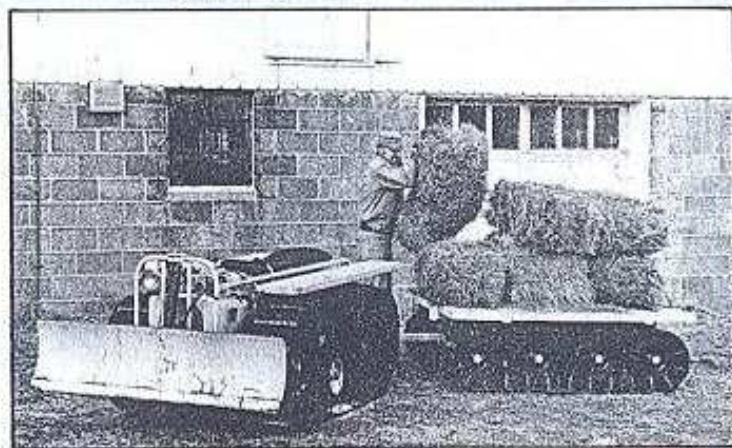
# TAKE HIM WHERE THE WORK IS...



Versatility PLUS! That's Arnold's new FERRET Tractor. Loaded with men and equipment, towing a heavy load plowing snow or gravel, the FERRET provides muscle a "compact" rough-terrain tractor. And its built extra tough for industrial uses.

FERRET loves a challenge. Give him a load to pull, and show in some rough terrain just to be mean. Now he's really in his element — he'll show you how stubborn he is! FERRET'S modular construction lends him to your kind of work. Attach special racks, rails — or a platform. FERRET has already proven to be a dependable and low cost source of transportation and tractive force for loggers, power and light crews, contractors, railroad men and many, many others. Here are just a few of the many tasks he is used for daily:

- LIGHT BULLDOZING AND BACKFILLING
- POWER LINE INSPECTION AND MAINTENANCE
- TIMBER CRUISING
- SWAMP AND BOG RESEARCH
- SNOW PLOWING
- HIGHWAY ENGINEERING CREWS
- TREE PLANTING
- TELECOMMUNICATION CREWS
- TRACTOR REFUELING
- CRANBERRY PICKING
- EXPLORATION
- TOPOGRAPHIC MAPPING
- HUNTING AND FISHING
- AIRPORT WORK
- MINE ENGINEERING





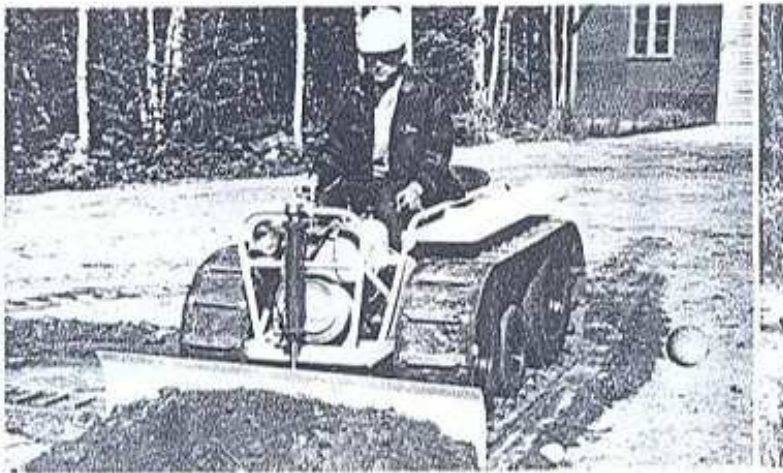
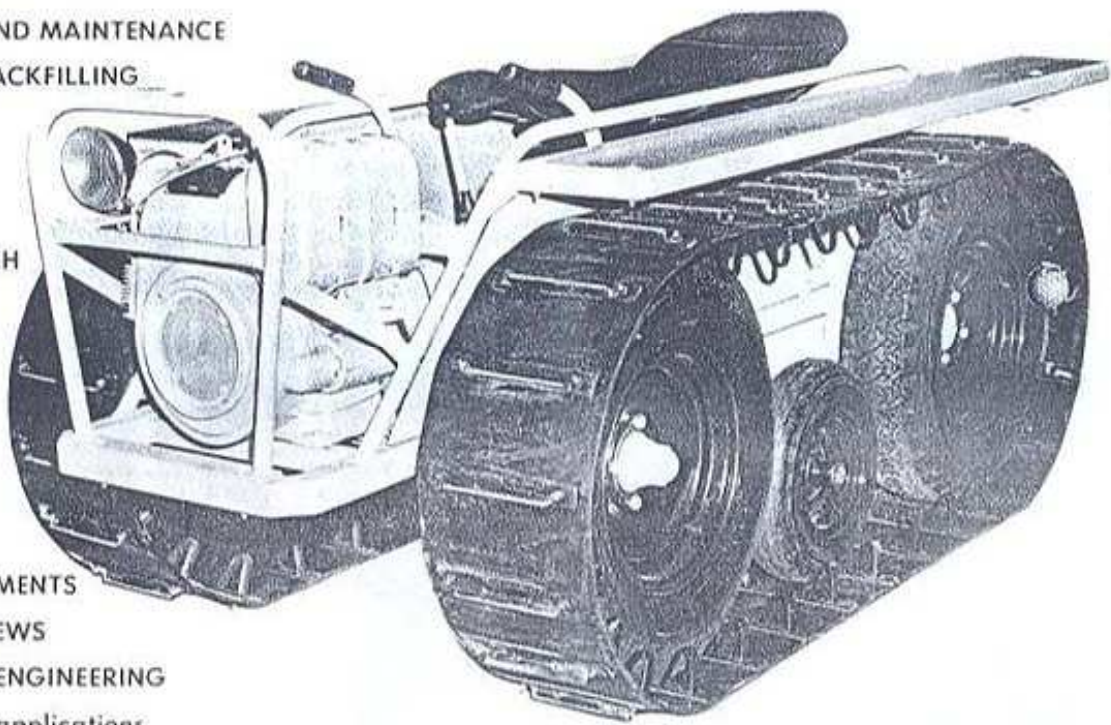
A well engineered, rugged, versatile industrial type machine with high clearance (16") for rough terrain and swamps. The power train has built-in extra strength with infinite speed control . . . extremely easy to operate. Smooth performance and maneuverability is assured with stamina for the most difficult jobs.

ARNOLD

# RANGER X

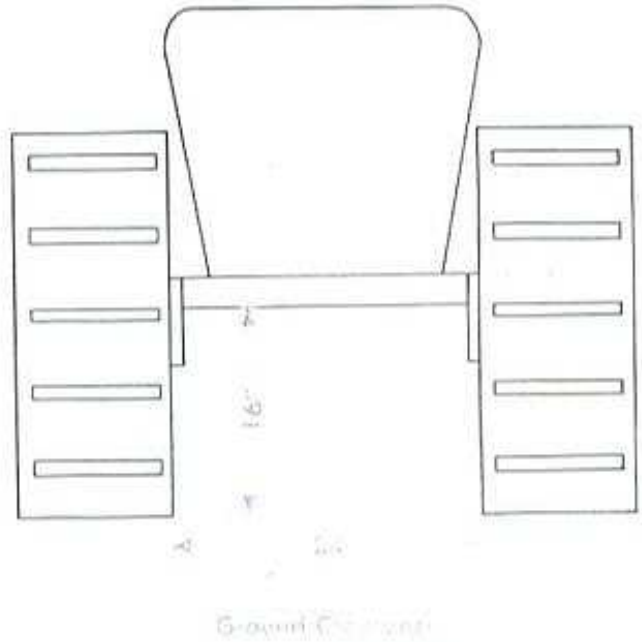
is a low cost dependable unit providing transportation and/or tractive effort for:

- POWER LINE INSPECTION AND MAINTENANCE
- LIGHT BULLDOZING AND BACKFILLING
- TOPOGRAPHIC MAPPING
- MINE ENGINEERING
- TREE PLANTING
- SWAMP AND BOG RESEARCH
- CRANBERRY GROWERS
- SNOW PLOWING
- HUNTING AND FISHING
- TIMBER CRUISING
- EXPLORATION CREWS
- TRACTOR REFUELING
- RAILROAD SIGNAL DEPARTMENTS
- TELECOMMUNICATIONS CREWS
- HIGHWAY AND RAILROAD ENGINEERING
- AIRPORTS, plus many other applications



# SPECIFICATIONS

- OVERALL HEIGHT ..... 39"
  - OVERALL LENGTH (Including Trailer Hitch) ..... 89"
  - OVERALL WIDTH ..... 48"
  - GROUND CLEARANCE BETWEEN TRACKS ..... 16"
  - MAXIMUM SPEED ..... 13 MPH
  - UNIT OPERATING PRESSURE . UNDER 1 LB. PER SQ. INCH
  - TURNING RADIUS ..... PIVOTS ON EITHER TRACK
  - LOAD CARRYING CAPACITY . 1,000 LBS. AND 2 ADULTS
  - UNLOADED WEIGHT ..... 1,050 LBS.
- LOADS INTO 1/2 OR 3/4 TON PICKUP



# OPTIONAL EQUIPMENT

- HYDRAULIC CONTROL package consisting of pump, valve, hoses, cylinder, mounts, belt, fittings.
- TRACK TYPE TRAILER ("SWAMPER") 48" wide, 22" high, bed length 72" with 2,000 pound capacity.
- TRAILER Heavy duty, for towing behind "RANGER", with 3' x 5' bed and equipped with wheels or steel skis.
- 5' wide straight blade complete with hand lift.
- 5' wide blade complete with hand lift. Can be used straight or ANGLED to left or right.
- for transporting RANGER X over the road.

SOLD BY:

The manufacturer reserves the right to make design or specification changes for product improvement without notice.



Manufactured by:  
**ARNOLD MANUFACTURING CO.**  
 Pengilly, Minn. 55775

Catalog 6809

Printed in USA