

ROLLIGON

MODEL 4460

off-highway
amphibious

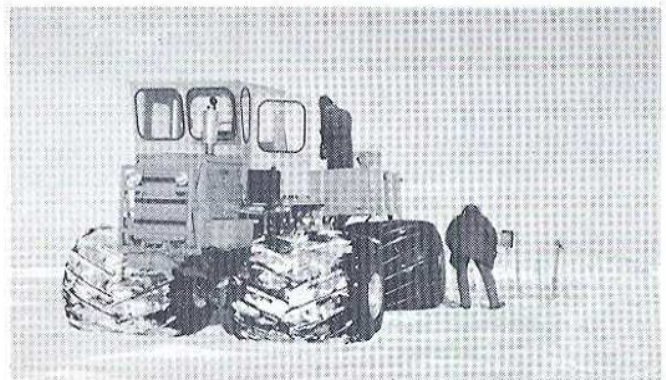
5 TON HAULER



Line Pipe Stringing With Trailer



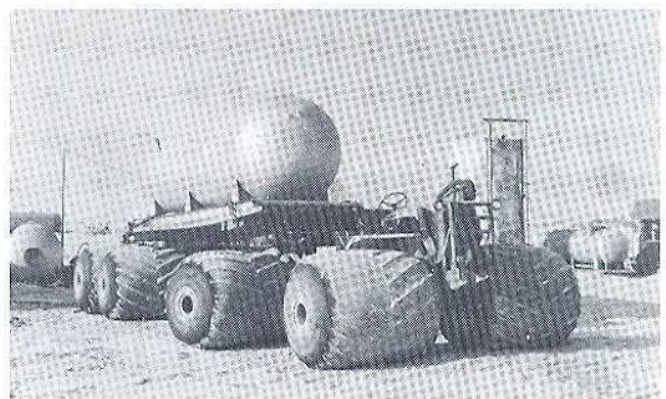
Dredge Pipe Tailing



Arctic Exploration



Dragline Servicing



Fuel Hauling With Trailer

***Go anywhere
anytime***

SPECIFICATION NO. 274



Core Drilling

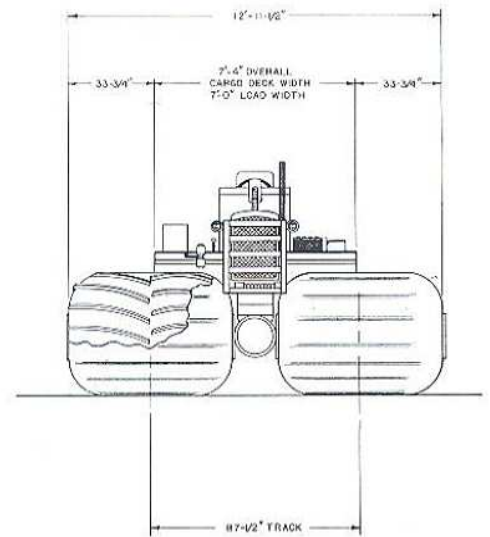
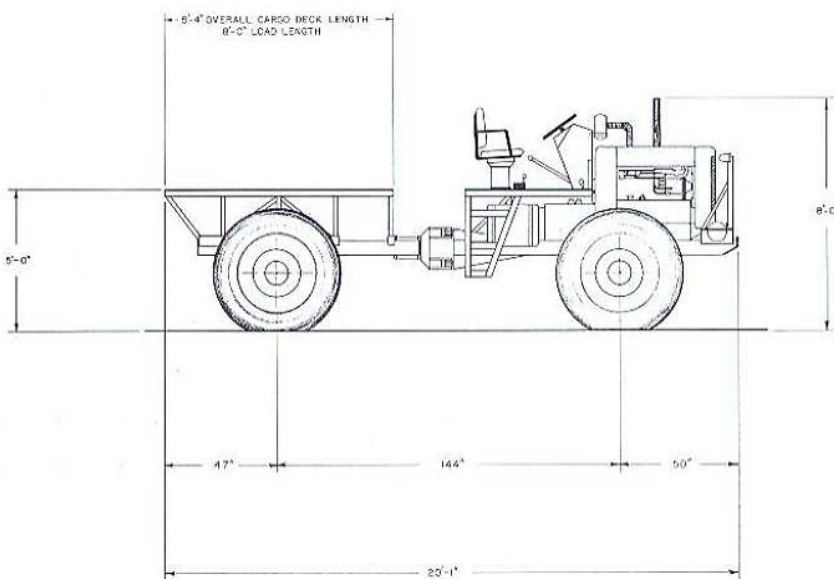


ROLLIGON

MODEL 4460

PERFORMANCE

Rolligon's Stafford, Texas Mfg. Plant



Maximum Payload on Land	10,000 lbs.
Maximum GVW in Water	19,000 lbs.
Recommended Maximum Operating GVW in water	12,500 lbs.
Vehicle Weight, no payload, no operator, no fuel	7,500 lbs.
Minimum Ground Clearance at Pivot	25 inches
Maximum Forward Gradeability	60%
Maximum Side Gradeability	45%
Maximum Angle of Approach	60 degrees
Maximum Angle of Departure	80 degrees
Maximum Forward Speed	24 MPH on land
Minimum Turning Radius	22 feet

ROLLIGON

MODEL 4460

FEATURES



Dredge Pipe Tailing

PAYLOAD

Maximum Payload with intermittent operation and full ground contact of all wheels on firm terrain. Payload reduced proportionate to duration of operation, terrain unevenness, and terrain softness.

POWER PLANT

Ford Model 362 6 cylinder diesel engine. 101 rated horsepower. Hand shift transmission, 4 speeds forward (6.88/3.34/1.66/1:1), 1 speed reverse (8.25:1). 13" dry clutch. Oil type air cleaner. Dual fuel filter. Lube oil filter. 12 volt electric starter. 12 volt electric generator. 12 volt battery. Radiator with steel front guard. Open side engine housing. Exhaust muffler and stack. Foot throttle. Hand throttle. 35 gallon steel fuel tank. Optional gasoline engine. Optional arctic operation equipment. Optional automatic transmission. Automatic safety shutdown control.

DRIVE LINE

All wheels powered. Spicer 1350 Universal Joints from power plant. Rolligon Chain Case, 2.64:1 ratio, self oiling quadruple roller chain. Two Rockwell Type L145 Axles, 18,500 lb. rating, 6.17 ratio, with "no-spin" differentials, with 6-3/4" wheel mounting studs, with welded steel mounts for bolted assembly. Spicer 1550 Universal Joints to axles. Optional PTO Chain Case.

FRAME

Front frame on one axle, rear frame on one axle, coupled by articulated joint. Welded alloy steel construction with dual 6" channels. Integral welded mounts for assembly of components.

ARTICULATED JOINT

Welded alloy steel construction. Upper and lower 1-1/2" thick gudgeons welded to pivot section. Upper and lower trunnion pairs welded to heavy front frame end plate. Pair 2" dia. tool steel pivot pins mounted in self-aligning ball bushings. Machined steel swivel tube, 9-1/2" dia. 12" long, 1" wall. Machined steel swivel housing, bronze bushed, sealed bronze thrust bearings, supported on rear frame. Steel swivel stops for 40° total swing.

STEERING

32° maximum steering angle left or right from center. Full hydraulic power steering. Hydraulic pump driven by power plant. Relief valve. Oil reservoir with filter. Two heavy duty steering cylinders with stainless steel rods. Hydraulic hoses with threaded fittings. Steering control valve mounted on steering wheel post. Steel plastic covered steering wheel.

WHEELS

Welded and machined aluminum wheels. Each wheel mounted to axle hub flange with 6-3/4" nuts. Each wheel with 54" diameter by 68" wide cleated Rolligon Tire mounted onto wheel end flanges with aluminum Tire Keeper Rings. Tire inflatable to 6 psi. and inflated from engine exhaust by inflation hose. Optional Spare Wheel and Tire Assembly. Optional smooth Rolligon Tires. Optional steel wheels.

BRAKES

Disk brake on front axle drive shaft hydraulically operated by foot pedal. Drum brake on transmission output shaft mechanically operated by hand lever with ratchet.

CARGO DECK

All welded steel structure bolted to rear frame. 16 gauge diamond steel floor plate. 2" x 4" stake pockets on approximately 30" centers. 20,000 lbs. pintle hook at rear. Optional aluminum construction with 300 lbs. less weight and 300 lbs. more payload.

FRONT WINCH

10,000 lb. capacity. Steel mounts. Cast aluminum housing. Cast steel drum. 3/8" x 100' steel cable. 3/8" x 18" steel tail chain and hook. Line shaft drive from engine transmission P.T.O. Reel and unreel hand lever. Unspooling release lever.

OPERATOR PLATFORM

Operator platform with aluminum floor plate and welded steel structure. Control console and operator seat mounted on platform. Aluminum ladder each side. Single operator seat facing forward on vehicle centerline, 4" fore and aft adjustment, weatherproof cushioned seat and back. Optional platform railings. Optional passenger seats.

INSTRUMENTS

Steel instrument panel mounted on operator platform. Indicator lights for generator, oil pressure, water temperature. Ignition lock switch. Engine start button. Engine stop button. Hourmeter. Optional dial gauges. Optional fuel gauge. Optional panel light.

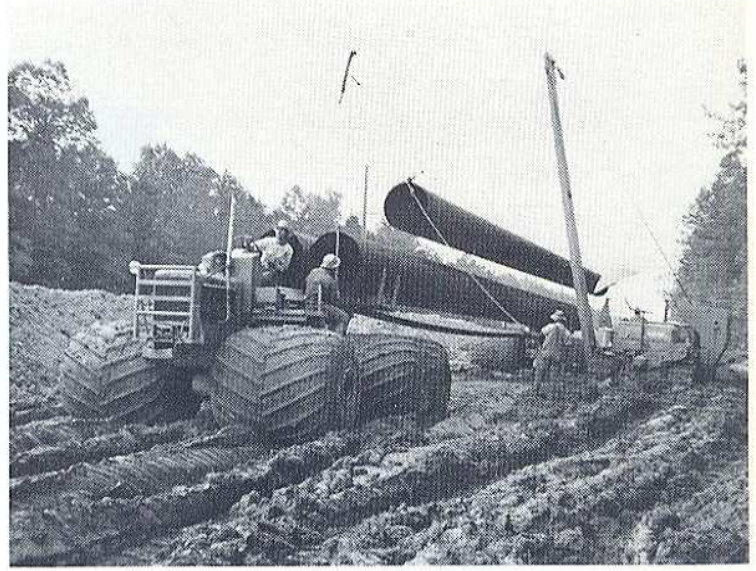
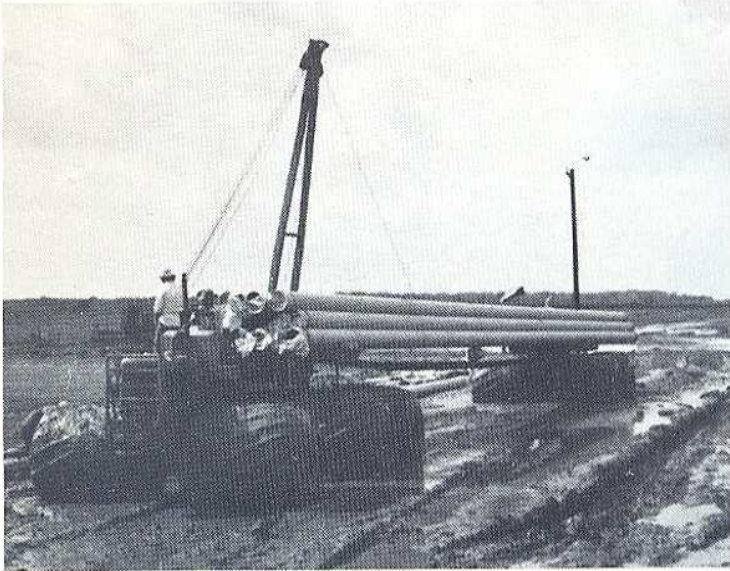
STANDARD ACCESSORIES

Pair headlights with single filament sealed beam bulbs. All surfaces painted Rolligon yellow except aluminum, tires, and engine. 1 copy Operation and Service Manual. Wheel lug wrench. Tire Inflation Hose. Tire Pressure Gauge. Tire Puncture Kit.

OPTIONAL EQUIPMENT

10,000 lb. hydraulic driven Rear Cargo Deck Winch. Front A-Frame. Rear A-Frame. Cargo Deck Cable Roll. Trailer Fifth Wheel. Arctic and Standard Enclosed Cabs. Brush Guard. Canopy Top. Front Tow Hook. Certified ROP Structure.

ROLLIGON MODEL 6660/4060 PIPEHAULER



USE ROLLIGON EQUIPMENT

- 20 Tons maximum load on land
- Diesel Powered Tractor
- 6 Wheel Tractor - all powered
- 4 Wheel Trailer - non-powered
- 54" dia. x 68" wide Rolligon Tires with molded-in lugs
- 15,000 lb. vehicle weight
- Available with flat bed
- Power Shift Transmission

ROLLIGON CORPORATION
10635 BRIGHTON LANE
STAFFORD, TEXAS 77477

TELEPHONE: (713) 495-1140

ROLLIGON CORPORATION 10 X 10 TITAN
LOW GROUND PRESSURE, ENVIRONMENTAL FRIENDLY
10 X 10 TITAN VEHICLE WITH SUPERIOR LOAD ABILITIES

AVAILABLE
FROM ROLLIGON CORPORATION IS THE 10 X 10 TITAN
ALL TERRAIN, HEAVY HAULER UTILITY CARRIER

THE TITAN IS A FULL TIME, TEN (10) ALL WHEEL DRIVE
VEHICLE DESIGNED TO BE A LOW GROUND PRESSURE UNIT USED IN
CARRYING APPLICATIONS OF UP TO 60,000 LBS. THE VEHICLE IS
EQUIPPED WITH THE ROLLIGON 72 X 68 X 28 TIRES.

THE UNIT FEATURES ARTICULATED POWER STEERING, DIESEL
ENGINE, MECHANICAL DRIVE AND A ROLL PIVOT SECTION THAT ALLOWS
MAXIMUM GROUND CONTACT OF ALL TIRES.

STEEL AND ALUMINUM CONSTRUCTION COMBINED WITH
ROLLIGON HIGH FLOATING TIRES ALLOWS THE VEHICLE TO CROSS VERY
UNSTABLE GROUND CONDITIONS WITH EASE.

THE CARGO AREA IS FULL LENGTH OF VEHICLE.

OPTIONAL CAB IS AVAILABLE FOR INCLEMENT WEATHER
CONDITIONS. CONTACT ROLLIGON CORP. FOR DETAILS.

GENERAL SPECIFICATION

STEEL & ALUMINUM CONSTRUCTION
MAXIMUM PAYLOAD..... 60,000 LBS.
VEHICLE WEIGHT DRY (APPROX.)..... 90,000 LBS.
MAXIMUM SPEED ON LAND..... 18 MPH
ENGINE - DIESEL, 400 HP AT 2100 RPM
TRANSMISSION - POWER SHIFT
BRAKES - AUTOMATIC PARKING ENCLOSED DISC BRAKES
FULL TIME TEN WHEEL DRIVE (10 X 10)
WHEELS: ALL STEEL CONSTRUCTION
TIRES: ROLLIGON 72 X 68 X 28 V6 VIDAR
ONE OR TWO SEATS IN OPERATOR'S COMPARTMENT
OTHER OPTIONAL TIRES AVAILABLE
OPTIONAL FRONT AND REAR WINCHES

FOR ADDITIONAL INFORMATION AND DETAILS
CONCERNING A DEMONSTRATION PLEASE CONTACT:

ROLLIGON CORPORATION
10635 BRIGHTON LANE
STAFFORD, TEXAS 77477
U.S.A.

PHONE (713) 495-1140
FAX: (713) 495-1145