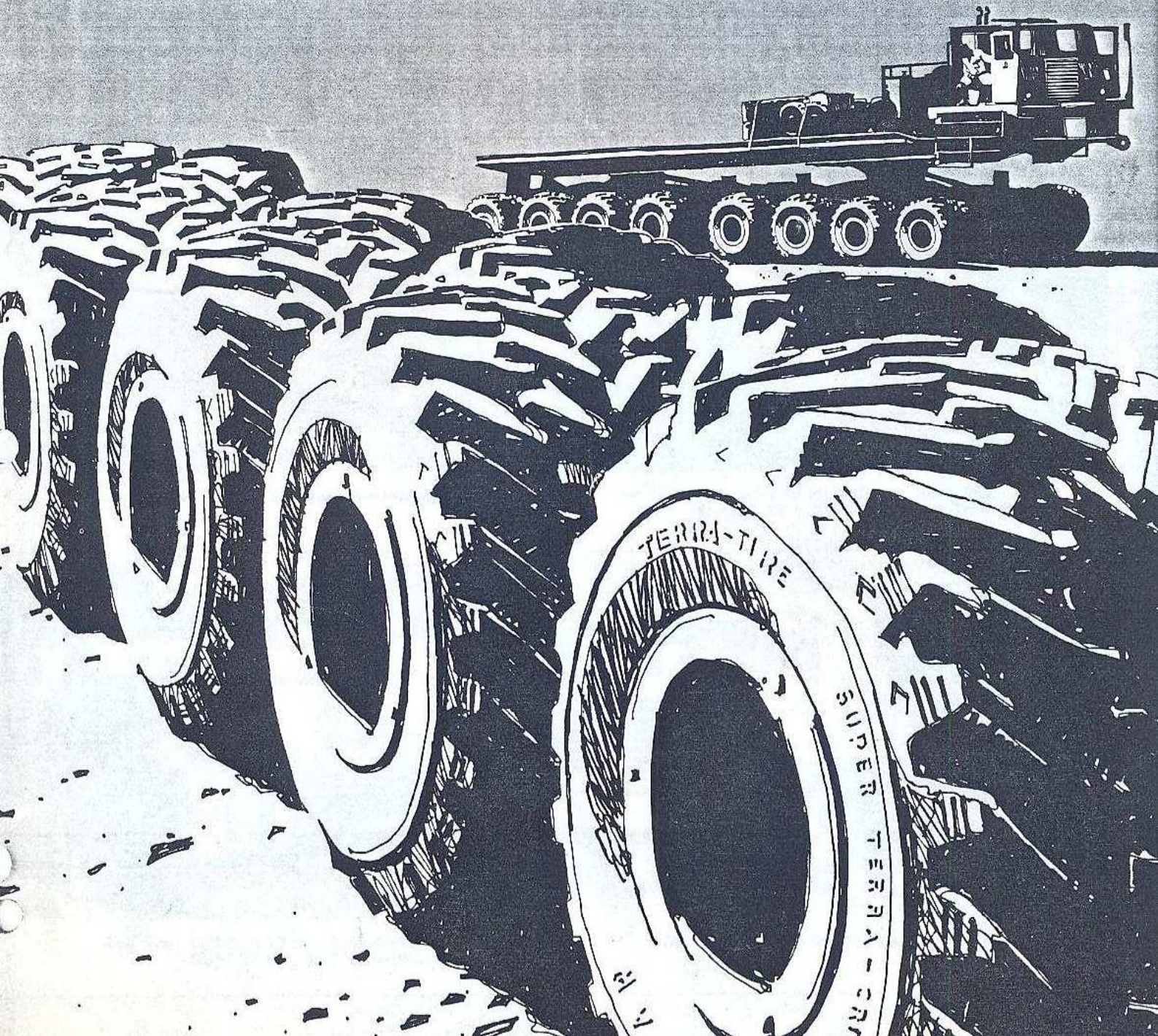


**GOOD YEAR**

®

# TERRA-TIRE<sup>®</sup>

## flotation tires



# introduction to the TERRA-TIRE<sup>®</sup> low profile tire - - - tubeless

## Description

® Registered Trademark

TERRA-TIRE is a high flotation tire. In comparison with conventional tires, they have a wider cross section, a larger air volume, a more flexible carcass, and operate at lower inflation pressures. This unique design gives them a large "footprint" in contact with the ground and distributes load over a large area at low unit pressure. The net result is a flotation effect, for go-anywhere performance — despite terrain, despite load.

Different styles of TERRA-TIRE, high flotation tires, are available in a variety of sizes for use on all-terrain vehicles. A separate line of estate

TERRA-TIRE low pressure tires is available for golf cars and similar small-sized utility vehicles in a variety of sizes for virtually unlimited application versatility.

All TERRA-TIRE FLOTATION TIRES are of tubeless construction, and all are made with 3-T— (triple-tempered) cord to set the cord at peak strength and resilience. Goodyear's exclusive TUF SYN rubber is used in construction of both tread and sidewall. Tread designs include smooth, rib, and traction-lug types, permitting considerable latitude in matching tire to application.

## Advantages

**(1) Lower Unit Ground Pressure:** The large ground contact area of TERRA-TIRE flotation tires effectively distributes load over a relatively broad area, providing a reduction in unit ground pressure in comparison with conventional tires. On a typical golf car, for example, unit pressure is only about 5 pounds per square inch. In contrast, the walking pressure of a golfer is of the order of 24 pounds per square inch.

This reduction in ground pressure means less soil compaction, less ground disturbance — on the farm or on the golf course. It also means improved mobility, permitting the TERRA-TIRE to traverse mud or snow or soft sand that would often bog down a conventional tire. And since these tires operate at relatively low inflation pressures they literally envelop rocks, stumps and other obstacles. This go-anywhere capability is as adaptable to farming, logging, and exploration as it is to the golf course.

**(2) Improved Shock Absorption:** The carcass of a TERRA-TIRE is very flexible. This design characteristic, coupled with low inflation pressures, provides for high level energy absorption. The resulting air-cushion effect means less wear on equipment, reduced fatigue for the operator. In fact, for many applications, the TERRA-TIRE, low pressure tire, is actually mounted without the use of springs. This offers a significant reduction in initial installation cost.

**(3) Increased Pay Load To Vehicle Weight:** The enveloping and cushioning effect of the TERRA-TIRE permit both a strength and a weight reduction in vehicle design. The net effect in designing a vehicle for a given load capacity is an effective increase in the ratio of pay load to vehicle

weight. It is axiomatic that this design capability introduced by TERRA-TIRE also results in a net savings in construction costs.

**(4) Reduced Rolling Resistance:** Large ground contact area, flexibility of carcass, and low inflation pressure work together to reduce rolling resistance. On sand, for example, a typical coefficient of rolling resistance for a TERRA-TIRE, high flotation tire, is .078, compared with .275 for a truck tire. Golf courses report that cars equipped with TERRA-TIRE tires often provide an extra 9 holes of operation on a single battery charge.

**(5) Cost-Saving Replacement of Duals:** One TERRA-TIRE does the work of two conventional tires. The weight of a TERRA-TIRE and rim is less than the weight of the dual wheels and tires it replaces. In addition to this net weight saving, these tires provide improved flotation, yet service and maintenance costs are generally lower.

**(6) Increased Ballast Capacity:** The large volume principle of TERRA-TIRE, low pressure tire, offers an additional advantage where ballast is concerned. The increase in ballast capacity is inherent in TERRA-TIRE design. This often means a significant cost saving in wheel weights. Savings realized in using liquid versus metal ballast is in the ratio of approximately 4 to 1. In addition, there's a convenience factor, since liquid ballast is so much easier to handle.

**(7) Conventional Service and Repair:** In spite of the advantages to be realized in the use of TERRA-TIRE, low pressure, low profile tires, this unusual tire requires nothing unusual in the way of service or repair. Conventional maintenance methods are totally applicable.

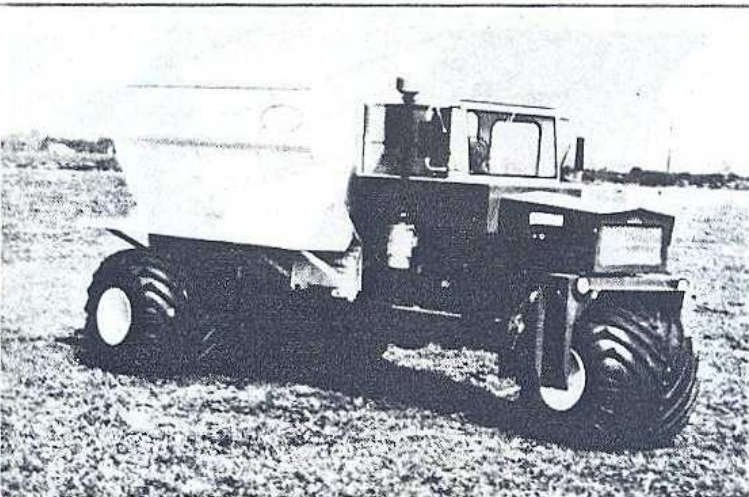
# Applications



Tire Size: 67 x 34.00-25 Super Terra-Grip.



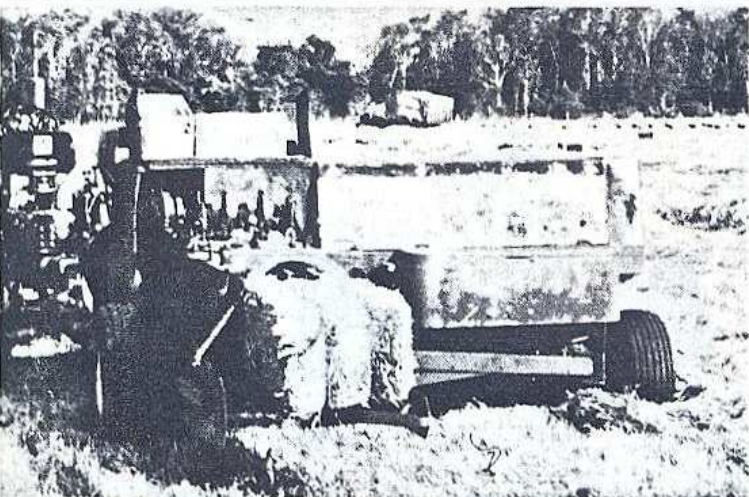
Tire Size: 67 x 34.00-30 Super Terra-Grip.



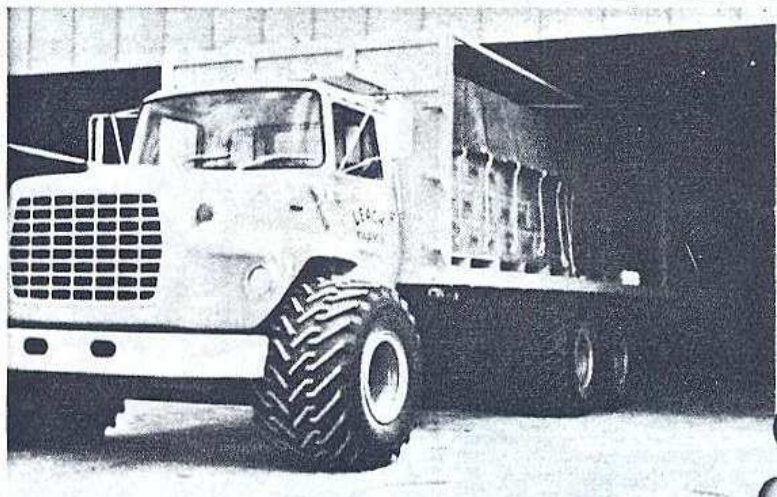
Tire Size: 44 x 41.00-20 Super Terra-Grip.



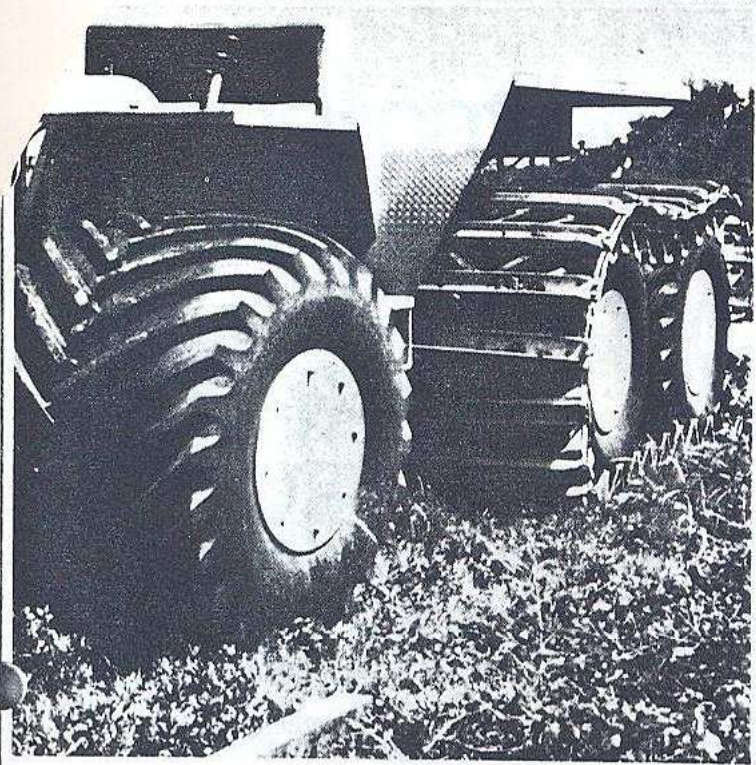
Tire Size: Drive 66 x 43.00-25 Super Terra-Grip.  
Steering 38 x 20.00-16.1 Super Terra-Grip.



Tire Size: Left 31 x 13.50-15 Terra-Rib.  
Right 27 x 9.50-15 Terra-Rib.



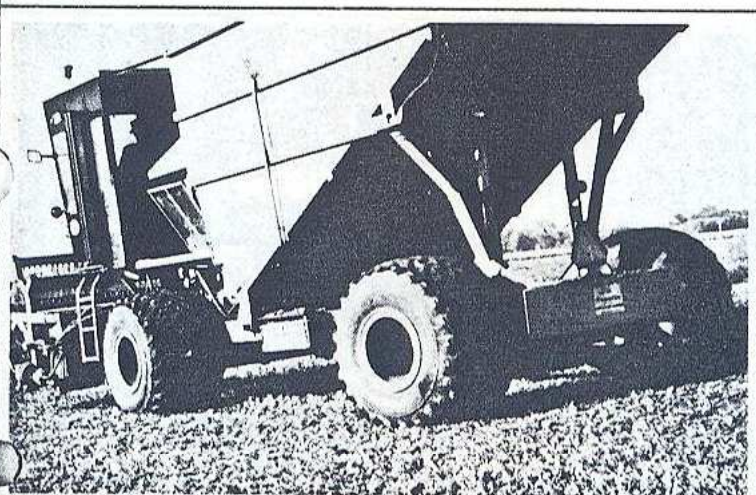
Tire Size: 48 x 31.00-20 Super Terra-Grip.



Tire Size: 66 x 43.00-25 Super Terra-Grip.



Tire Size: 66 x 43.00-25 Super Terra-Grip.



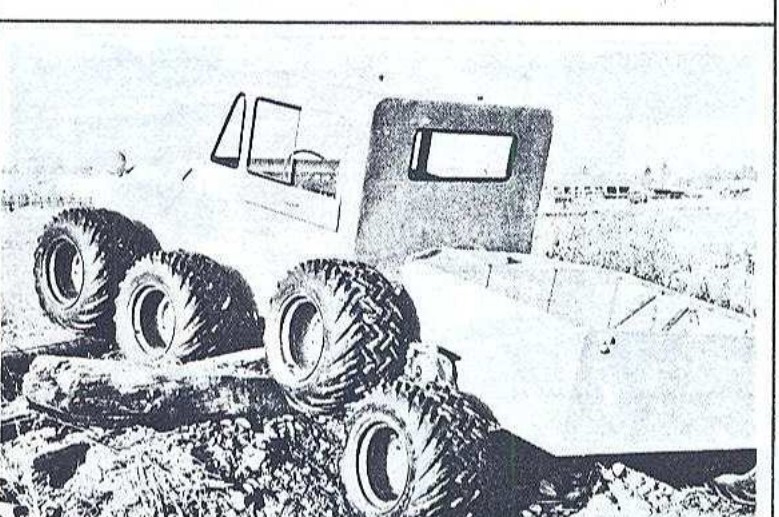
Tire Size: 48 x 31.00-20 Super Terra-Grip.



Tire Size: 67 x 34.00-25 Custom Flo-Grip.

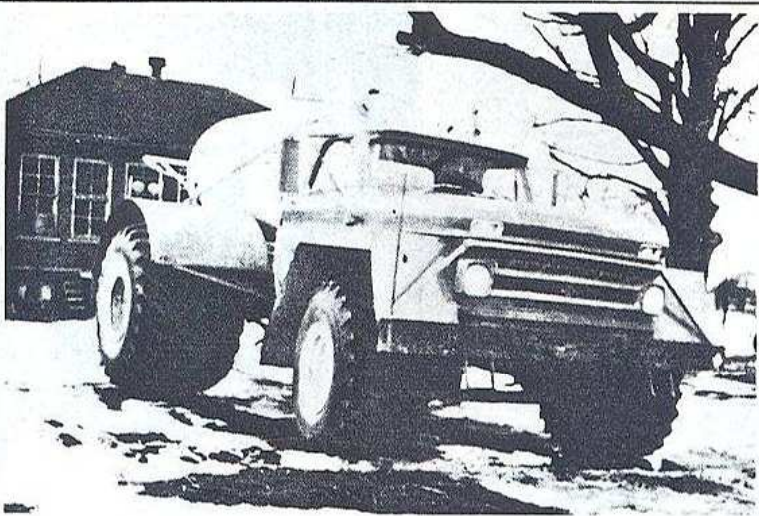


Tire Size: 66 x 43.00-25 Super Terra-Grip.

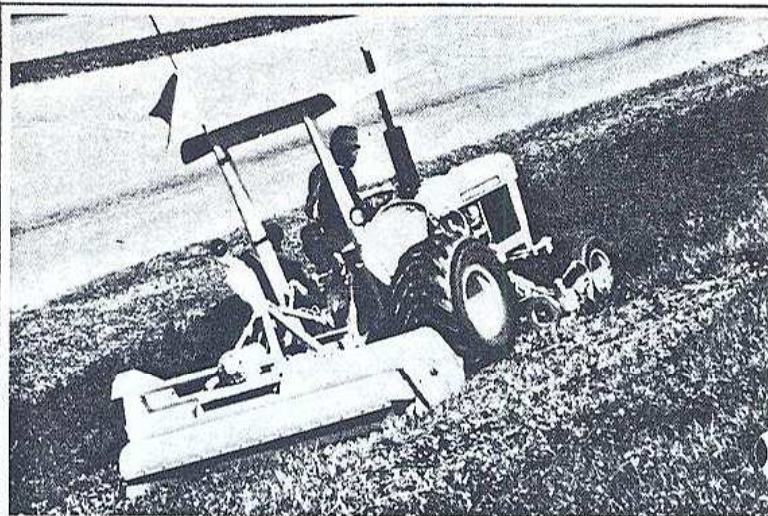


Tire Size: 31 x 15.50-15 Xtra-Trac.

# Applications



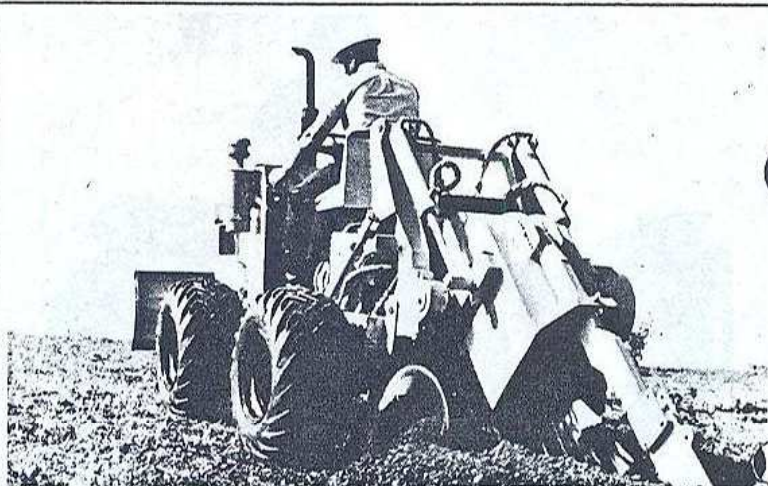
**Tire Size: Rear 66 x 43.00-25 Super Terra-Grip.  
Front 48 x 25.00-20 Super Terra-Grip.**



**Tire Size: Rear 38 x 20.00-16.1 Super Terra-Grip.  
Front 26 x 12.00-12 Terra-Rib.**



**Tire Size: 31 x 15.50-15 Wrangler XT.**



**Tire Size: 31 x 15.50-15 Xtra-Trac.**



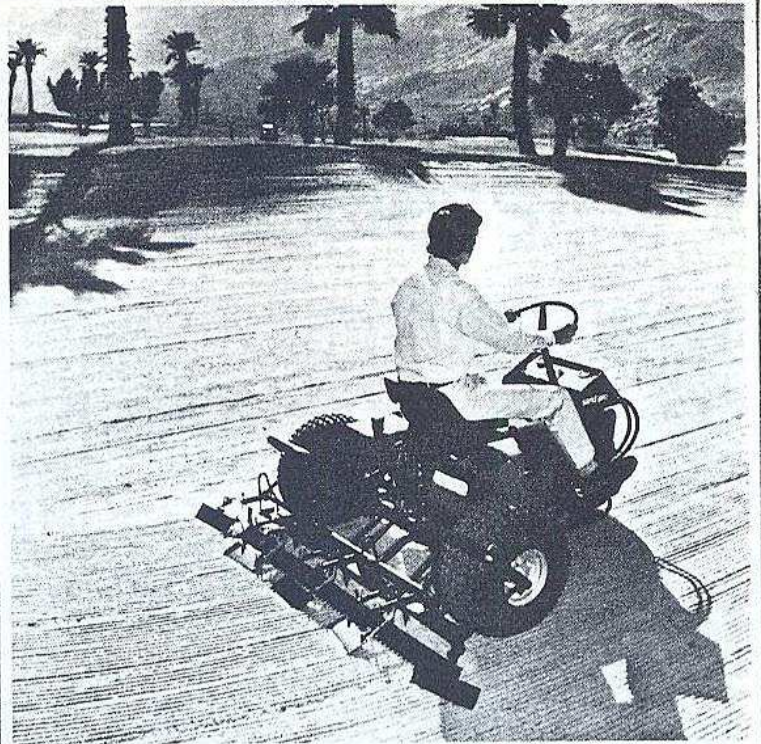
**Tire Size: Tractor 29 x 12.00-15 Super Terra-Grip.  
Attachment 16 x 6.50-8 Xtra-Traction.**



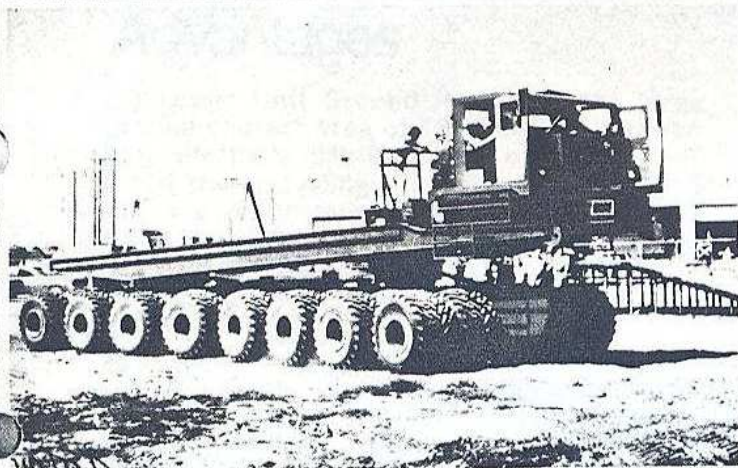
**Tire Size: 18 x 8.50-8 Rib**



**Tire Size: Front 16 x 11.50-6 Xtra Traction  
Rear 16 x 14.50-6 Super Terra-Grip**



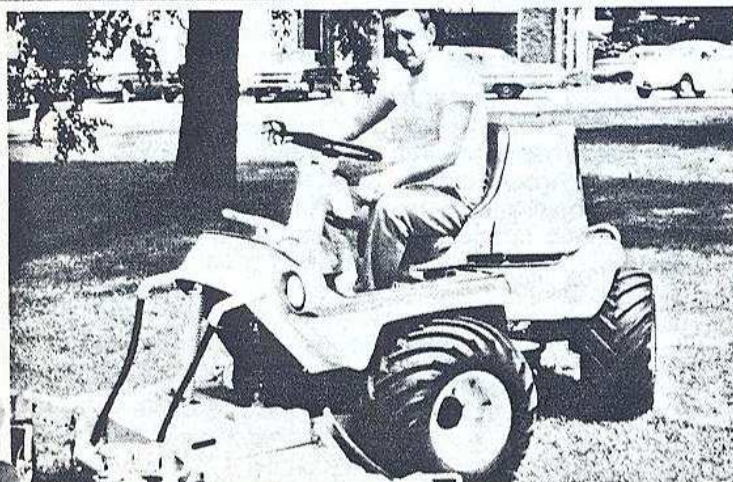
**Tire Size: 21 x 11.00-8 Compass.**



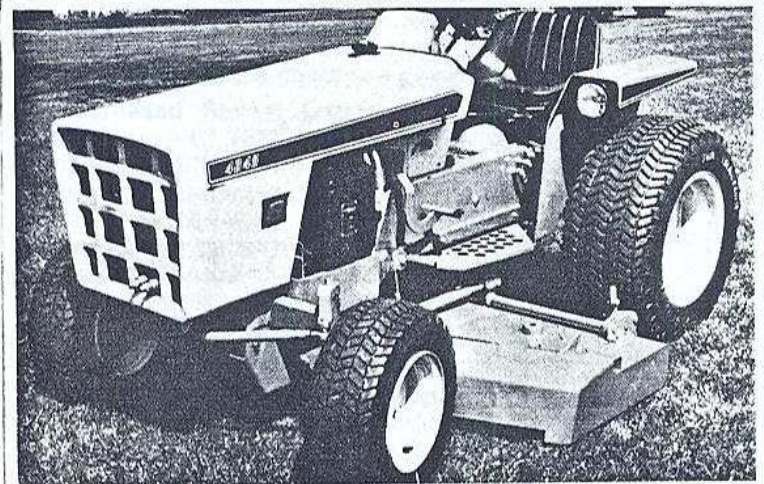
**Tire Size: 48 x 31.00-20 Super Terra-Grip.**



**Tire Size: 21 x 11.00-8 Compass**



**Tire Size: 26 x 12.00-12 Super Terra-Grip.**



**Tire Size: Rear 23 x 10.50-12 Xtra Traction.  
Front 17 x 6.50-8 Xtra Traction.**