

100% AMPHIBIOUS

Draglines
Ditchers
Marsh Plows
Drill Rigs

Marsh Buggies
Personnel Carriers
Cable Layers
Pontoon Sleds

SPECIAL AMPHIBIOUS EQUIPMENT FOR USE IN:

- Mosquito Control
- Pipeline Work
- Land Reclamation
- Oil Exploration
- Oil Field Maintenance
- Research
- Forestry
- Cable Laying
- High Line Construction
- Disaster Rescue
- Military
- Soil Testing
- Levee Work
- Highway Construction
- Conservation
- Surveying
- Hunting, Fishing
- Other specialized needs



**KING
OF THE
MARSHES**

QUALITY

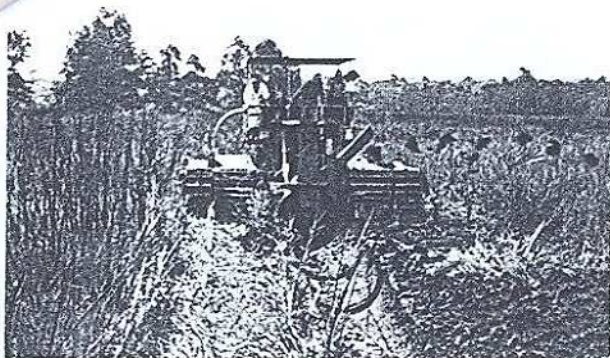
*"We strive
to satisfy"*

MARSH EQUIPMENT CO. INC.

P.O. Box 406 Thibodaux, La. 70301 USA
(504) 447-4021 Cable: QMECO

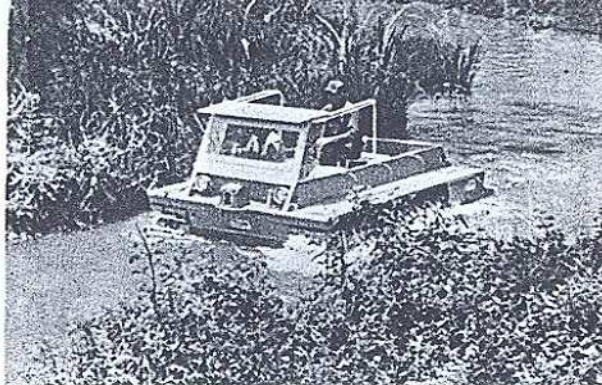
M. 97

we
4"
NC.
SA



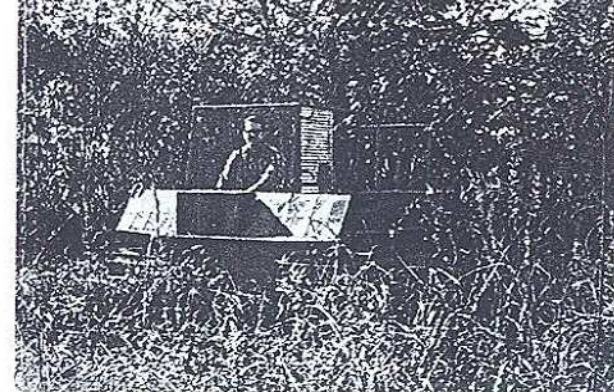
DITCHER

100% Amphibious Carrier
Rotary Ditching Unit
Model No. 104T-OSP-70 (C.C. Recess Track)
Power: Ford 380 cu. in. diesel, liquid cooled
Dimensions: 22'9" long x 16'9" wide x 12'3" high
Net Weight: 22,000 lbs. Cargo capacity 500 lbs.
Speed: Land, to 5 mph; Water, 3 to 4 mph



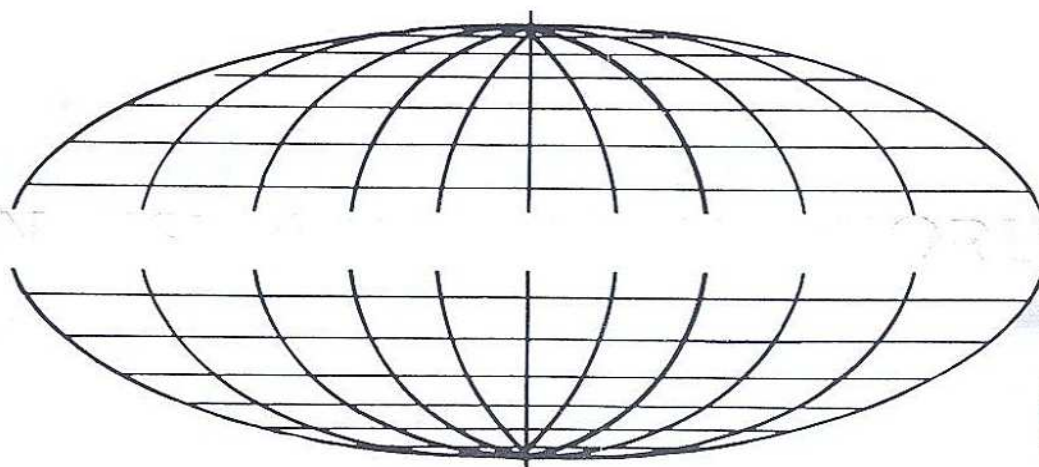
MARSH CUB

100% Amphibious Light
Personnel-Cargo Carrier
Model No. 104T-LPC-68 (C.C. Recess Track)
Power: Ford V-4 104 cu. in. gasoline, liquid cooled
Dimensions: 12'8" long x 7'0" wide x 6'4" high
Net Weight: 3,788 lbs. Cargo capacity 750 lbs.
Speed: Land, to 10 mph; Water, 3 to 4 mph



ARMADILLO

100% Amphibious Light
Cargo-Personnel Carrier
Model No. 104T-LPCC-71
Power: Wisconsin V-4 107 cu. in. gasoline, air cooled
Dimensions: 9'6" long x 6'10" wide x 6'0" high
Net Weight: 3,000 lbs. Cargo capacity 800 lbs.
Speed: Land, to 10 mph; Water, 3 to 4 mph



QUALITY'S Pledge to You

"Quality design and quality workmanship are not easy to achieve. But Quality Marsh Equipment has been enjoying unmatched success because of our ability to satisfy customer needs. The attention of our staff, a team of experts, is constantly available to all of our customers. Please feel free to call on us at any time concerning your special requirements."

George H. Diedrich, Jr.
President

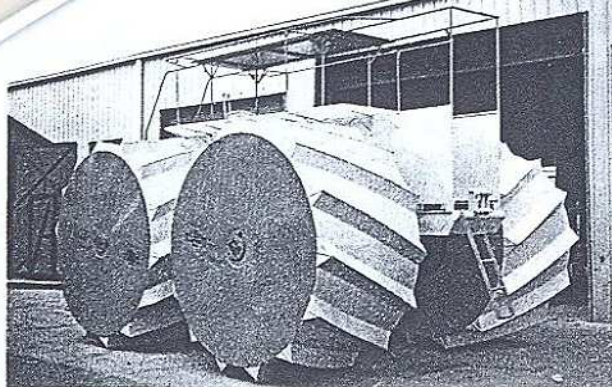
**Be *QUALITY* Wise
Don't Compromise**

QUALITY

*"We strive
to satisfy"*

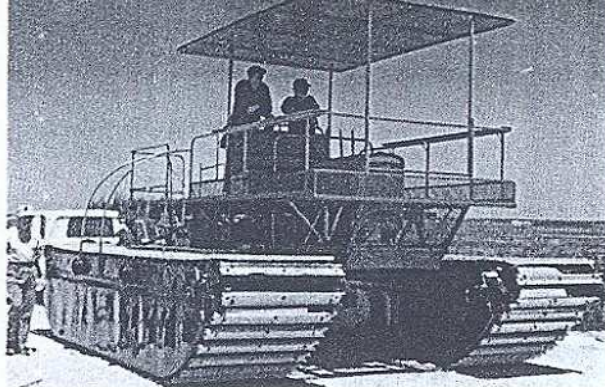
MARSH EQUIPMENT CO. INC.

P.O. Box 406 Thibodaux, La. 70301 USA
(504) 447-4021 Cable: QMECO



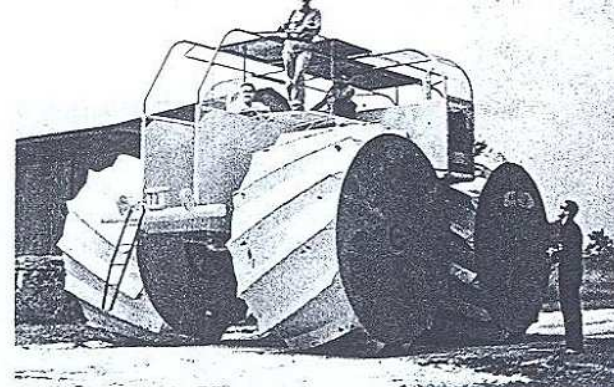
WHEEL BUGGY

100% Amphibious Four Wheel
Drive Carrier
Model No. 104W-HD-59
Power: G.M. 4-53 diesel, liquid cooled
Dimensions: 20'0" long, 15'3" wide x
13'2" high
Net Weight: 18,000 lbs. Cargo capacity
4,000 lbs.
Speed: Land, to 12 mph; Water, 4 to 6 mph



PERSONNEL CARRIER

100% Amphibious Personnel
Cargo Carrier
Model No. 104T-70
Power: Ford 300 cu. in. gasoline, liquid
cooled
Dimensions: 21'10" long x 15'3" wide x
11'5" high
Net Weight: 16,000 lbs. Cargo capacity
2,000 lbs.
Speed: Land, to 10 mph; Water, 3 to 4 mph



THE TWIN

100% Amphibious Four Wheel
Drive Carrier
Model No. 104W-HD-2E-66
Power: 2 Ford 256 cu. in. diesels, liquid
cooled
Dimensions: 21'0" long, 15'8" wide x 13'2"
high
Net Weight: 20,000 lbs. Cargo capacity 3,000
lbs.
Speed: Land, to 12 mph; Water, 4 to 6 mph

Go Anywhere Equipment

Putting Men and Machinery in Some Of the World's Roughest Terrain

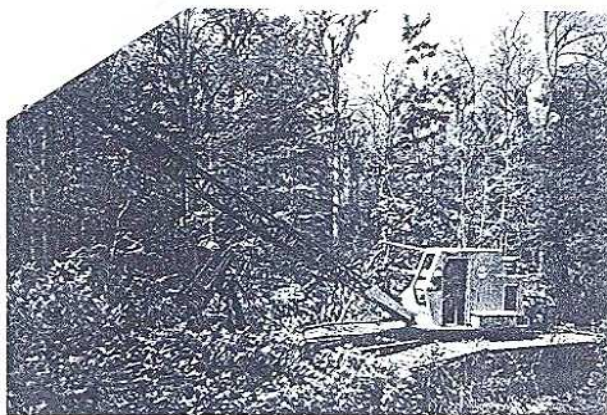
A pioneer in the field of amphibious equipment, Quality Marsh Equipment Company prides itself on the design and manufacture of machinery with the highest level of technique and skillful workmanship in a most modern plant. Equipment bearing the "Quality" label enjoys widespread use in such countries as Venezuela, Brazil, Columbia, Iran, Mexico, Iraq, Israel, Japan and many other parts of the world. Manufacturing facilities are located in the United States and in Japan for convenient delivery.

Some 25 years ago, when the search for oil reached marshlands that blocked ordinary transportation of manpower and equipment, Quality Marsh Equipment's designer, J. M. Poché developed a 100% amphibious marsh buggy that harnessed the uncertain terrain and enabled this search for oil to proceed more rapidly.

Through the years, Quality has advanced the state of the art of 100% amphibious equipment for many uses, from draglines to ditchers, from drill rigs to personnel carriers. Of course, the big feature of this unique equipment is its ability to float. Quality amphibious draglines, for instance, will cross soggy marshes, swamps, bayous, or even bays without any difficulties.

Quality's amphibious equipment comes in various sizes and with many attachments. Our draglines can traverse any terrain under their own power with one man control and do not require mats. Our Personnel Carriers can take men or equipment over the most difficult marsh, swamps, and peat bogs. Our Amphibious Carriers can also be equipped with drill rigs, rotoboom with clam bucket, Hydrocrane or other custom needs.

Quality Marsh equipment is in use by oil exploration and service crews, seismic work, pipeline companies, road and levee construction companies, highway engineers, mosquito control commissions, the military, and rescue work. All vehicles are designed for disassembly into compact units for shipment by truck, rail or ocean freight.



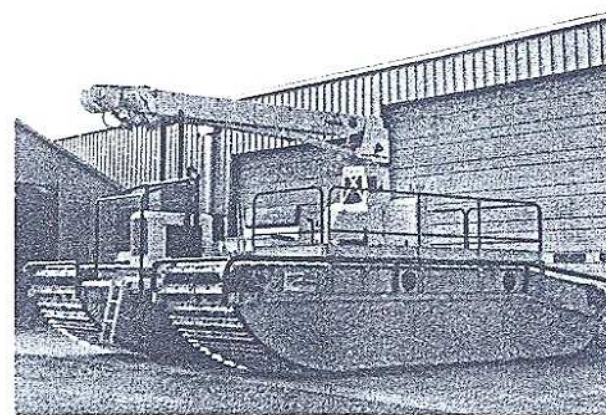
DRAGLINE

100% Amphibious Dragline Carrier
Model No. 10XT-HD-59M (C.C. Recess Track)
Power: Ford 256 cu. in. diesel; liquid cooled
Dimensions: 27'6" long x 18'6" wide x 12'8" high
Gross Weight: 32,000 lbs. (GPA 170 sq. ft.)
Speed: Land, to 5 mph; Water, 3 to 5 mph



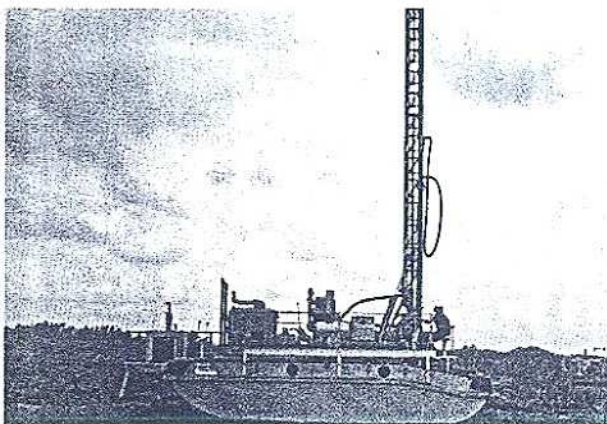
LILLY CUTTER

Water Grass Chopper Boat
Model No. 106B-WGC-66
Power: 2-G.M. 4-53 diesels; liquid cooled
Dimensions: 31'6" long x 7'10" wide x 5'6" high
Gross Weight: 17,000 lbs.
Speed: to 20 mph in open water



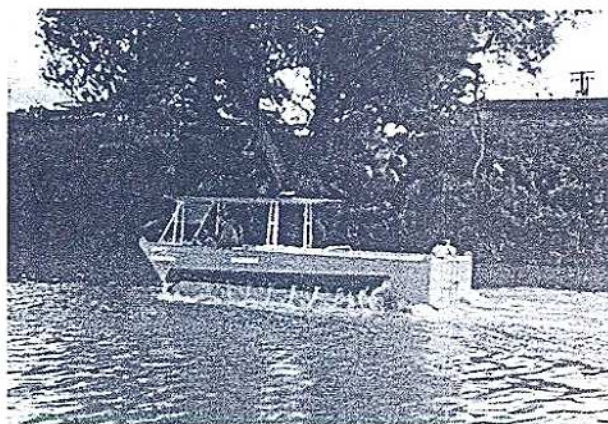
HYDROCRANE

100% Amphibious Carrier
Hydrocrane Unit
Model No. 10XT-HD-65M (C.C. Recess Track)
Power: Ford 256 cu. in. diesel; liquid cooled
Dimensions: 27'6" long x 18'6" wide x 12'8" high
Net Weight: 24,000 lbs. Cargo capacity 8,000 lbs.
Speed: Land, to 5 mph; Water, 3 to 4 mph



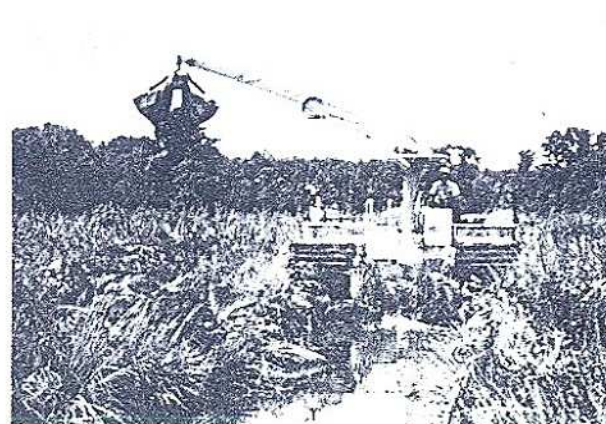
DRILL RIG

100% Amphibious Drill Rig Carrier
Model No. 10XT-HD-61M (C.C. Recess Track)
Power: Ford 256 cu. in. diesel; liquid cooled
Dimensions: 27'6" long x 18'6" wide x 12'0" high
Net Weight: 28,000 lbs. Cargo capacity: 6,000 lbs.
Speed: Land, to 5 mph; Water, 3 to 4 mph



THE EVERGLADE

100% Amphibious Light Cargo-Personnel Carrier
Model No. 104T-LCPC-67 (C.C. Recess Track)
Power: Ford 200 cu. in. gasoline; liquid cooled
Dimensions: 18'3" long x 7'10" wide x 6'3" high (with top down)
Net Weight: 6,300 lbs. Cargo capacity: 1,200 lbs.
Speed: Land, to 10 mph; Water, to 4 mph



ROTO-BOOM

100% Amphibious Carrier
Hydraulic Roto Boom Unit
Model No. 104T-65 (C.C. Recess Track)
Power: Ford 256 cu. in. diesel; liquid cooled
Dimensions: 25'0" long x 15'3" wide x 11'6" high
Net Weight: 16,500 lbs. Cargo capacity 1,500 lbs.
Speed: Land, to 5 mph; Water, 3 to 4 mph

G

P

Con
leve
bear
Braz
Man
deliv