

STANDARD SPECIFICATIONS FOR MODEL

Flextrac

P.O. BOX 5544, STATION A • 1201 42nd AVE. S.E., CALGARY, ALBERTA
TELEPHONE 287-2280 • AREA CODE 403 • TELEX NO. 038-21566

REPRESENTED BY



Weight — basic	19800 lb	Overall height	112.5 in
	8980 kg		286 cm
Payload	24000 lb	Overall length	260 in
	10890 kg		660 cm
Gross weight	43800 lb	Frame section modulus	121 cu in
	19870 kg		1983.19 cm ²
Track area at 6" penetration	12680 sq in	Maximum speed	12.5 mph
	8.18 m ²		20.1 km/h
Ground pressure — unloaded	1.56 psi	Ground clearance — loaded	17 in
	0.109 kg/cm ²		43 cm
— loaded	3.46 psi	Turning radius — minimum inside	108 in
	0.243 kg/cm ²		274 cm
Overall width — tracks on	119 in	Fording depth	48 in
	302 cm		112 cm
— tracks off	96 in	Climbing ability — grade	60 %
	244 cm	Sidehill ability — grade	40 %

Power Train:

Engine — Ford 391 C.I.D. V-8 Industrial gasoline
Transmission — Spicer 5652 — 5-speed forward, 1 reverse
Clutch — 14" hydraulic controls
Final Drive — Controlled planetary differential in oil bath
2.62:1 reduction
— outer planetaries 3.6:1 reduction
Steering — Lever controlled pneumatic power
Brakes — Lever/Push button emergency and parking
— pneumatic power differential brakes

Electrical:

Alternator — 60 amp, 12 volt
Battery — 70 amp/hr, HD

Pintle hook
Brush guard
Mufflers
Exhaust pipe rain caps

Running Gear:

Load Wheels — Rims: 6:50 x 20, 10-stud, H.D.
— Tires: 8:25 x 20, 12-ply Rock Grip
Suspension — One piece cast steel walking beams with urethane bearings
Tracks — Rubber belt and spring steel drop centre grousers with reinforcing bars
Sprockets — Steel with replaceable urethane inserts
Elevated front idlers — Solid rubber tires

Cab:

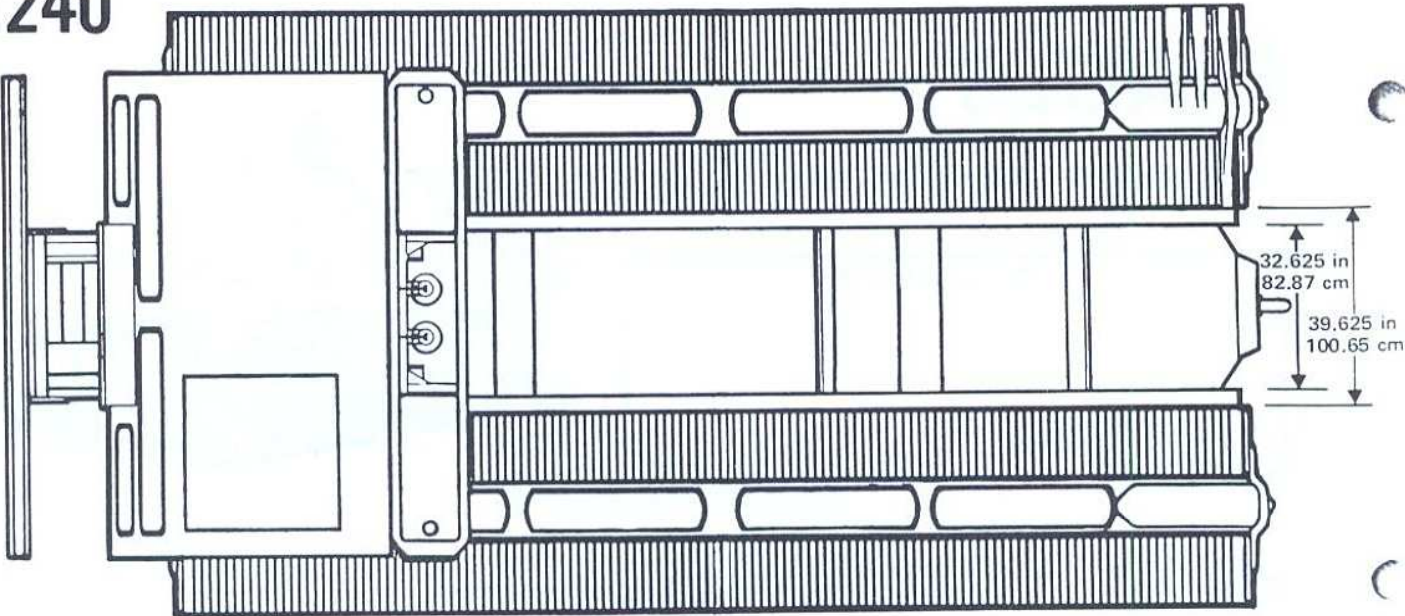
Three-man, steel; tiltable, roll down windows, sprung seats and jump seat; escape hatch; domelight; headlights; panel light; wipers — two speed; manual choke; heaters and defrosters; fuel capacity — 76 imp gallons (345 litres); Color — International orange, eng. compartment light. Instruments — Temperature gauge; ammeter; oil gauge; hour-meter; fuel gauge.

Operator's, maintenance and parts manuals (2 sets)
Tool kit
Antifreeze
Full under pan (3 removable sections)
Ears on walking beam for stops

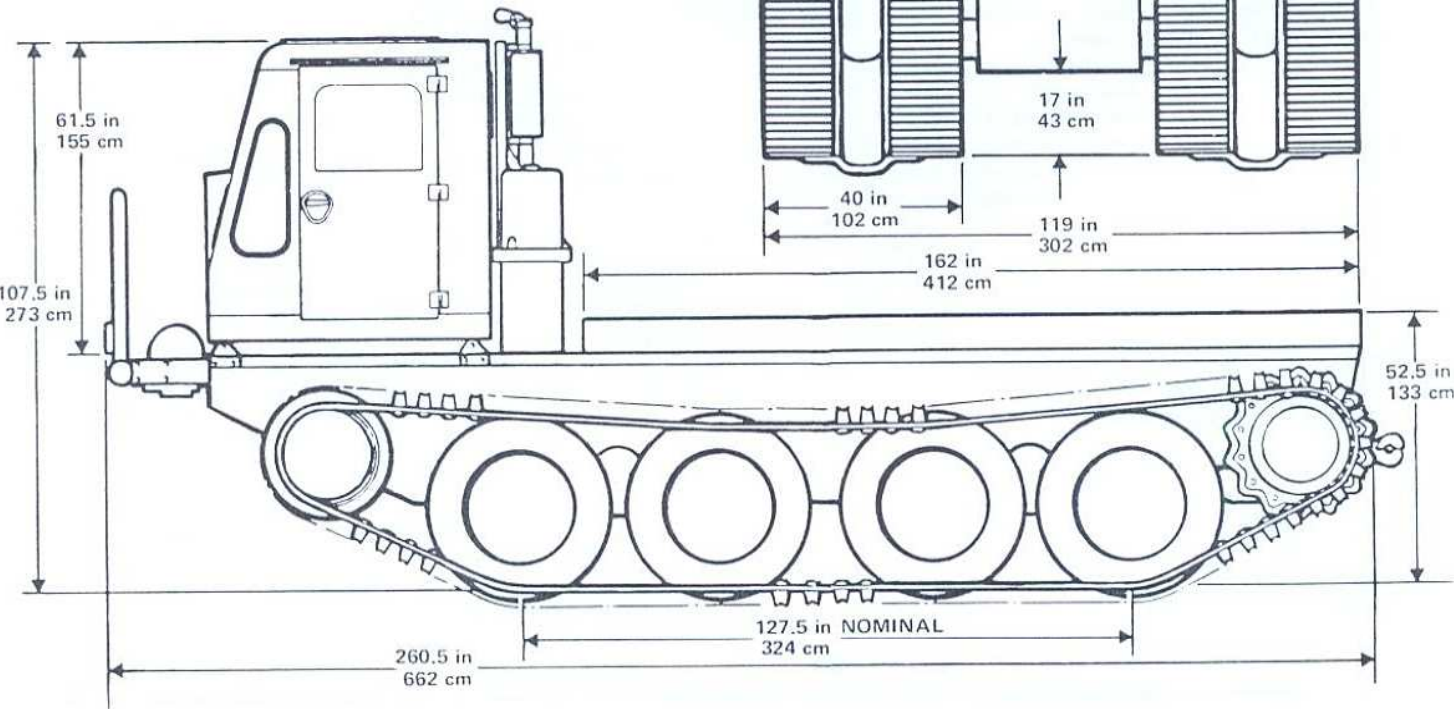
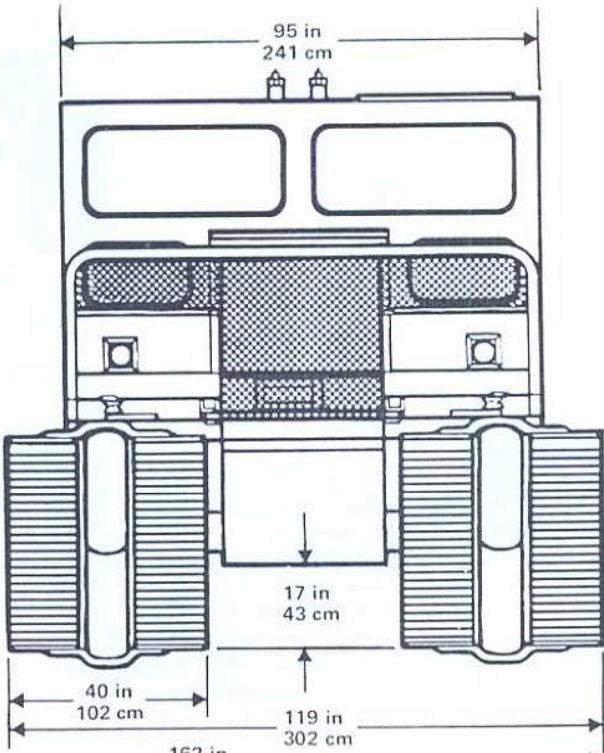
OPTIONS AVAILABLE including diesel engines and automatic transmissions.

Subject to change without notice

FN240



NOTES

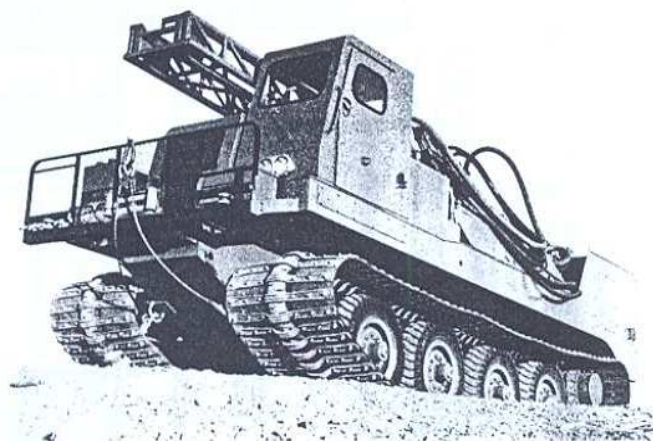


STANDARD SPECIFICATIONS FOR MODEL FN160

Flextrac

P.O. BOX 5544, STATION A • 1201 42nd AVE. S.E., CALGARY, ALBERTA
TELEPHONE 287-2280 • AREA CODE 403 • TELEX NO. 038-21566

REPRESENTED BY



Weight — basic	19200 lb	Overall height	112.5 in
	8620 kg		286 cm
Payload	16000 lb	Overall length	260 in
	7260 kg		660 cm
Gross weight	35200 lb	Frame section modulus	121 cu in
	15950 kg		1983.19 cm ²
Track area at 6" penetration	12580 sq in	Maximum speed	12.5 mph
	8.11 m ²		20.1 km/h
Ground pressure — unloaded	1,528 psi	Ground clearance — loaded	17 in
	0.107 kg/cm ²		43 cm
— loaded	2,800 psi	Turning radius — minimum inside	108 in
	0.197 kg/cm ²		274 cm
Overall width — tracks on	119 in	Fording depth	48 in
	302 cm		112 cm
— tracks off	96 in	Climbing ability — grade	60 %
	244 cm	Sidehill ability — grade	40 %

Power Train:

Engine — Ford 391 C.I.D. V-8 Industrial gasoline
Transmission — Spicer 5652 — 5-speed forward, 1 reverse
Clutch — 14" hydraulic controls
Final Drive — Controlled planetary differential in oil bath
2.62:1 reduction
— outer planetaries 3.6:1 reduction

Steering — Lever controlled pneumatic power
Brakes — Lever/Push button emergency and parking
— pneumatic power differential brakes

Electrical:

Alternator — 60 amp, 12 volt
Battery — 70 amp/hr, HD

Pintle hook
Brush guard
Mufflers
Exhaust pipe rain caps

Running Gear:

Load Wheels — Rims: 6:50 x 20, 10-stud, H.D.
— Tires: 7:50 x 20, 12-ply smooth
Suspension — One piece cast steel walking beams with urethane bearings
Tracks — Rubber belt and spring steel drop centre grousers
Sprockets — Steel with replaceable urethane inserts
Elevated front idlers — Solid rubber tires

Cab:

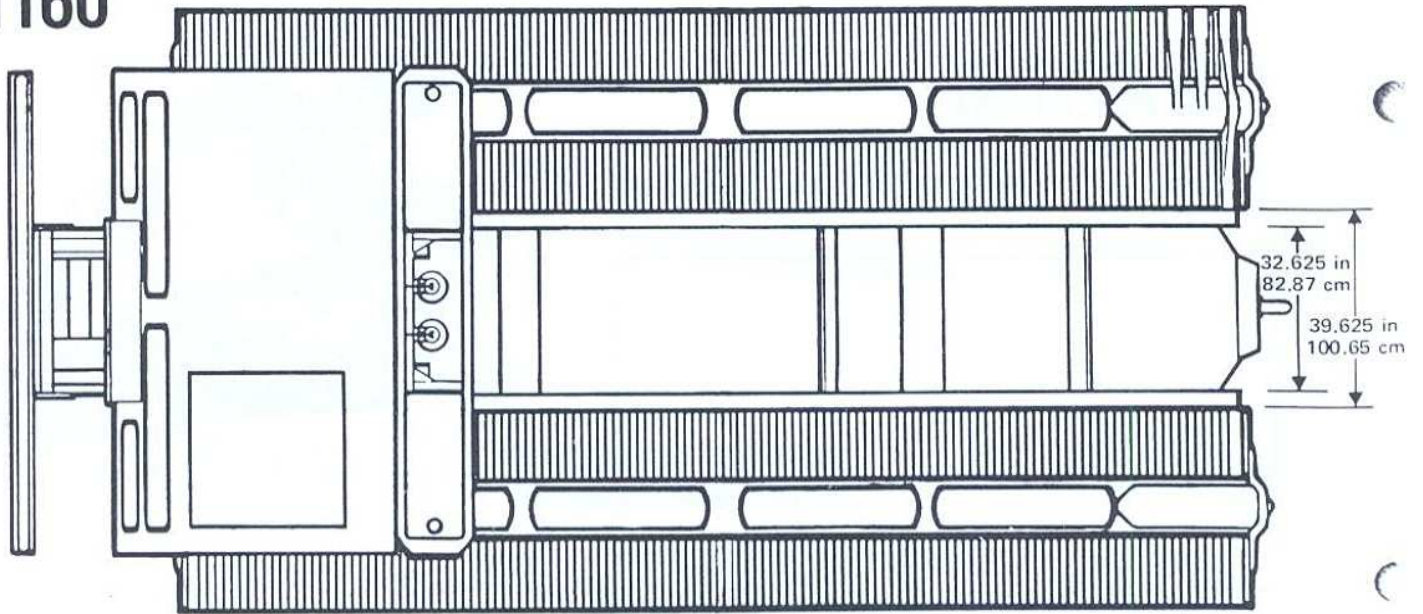
Three-man, steel; tiltable, roll down windows, sprung seats and jump seat; escape hatch; domelight; headlights; panel light; wipers — two speed; manual choke; heaters and defrosters; fuel capacity — 76 imp gallons (345 litres); Color — International orange, eng. compartment light. Instruments — Temperature gauge; ammeter; oil gauge; hour-meter; fuel gauge.

Operator's, maintenance and parts manuals (2 sets)
Tool kit
Antifreeze
Full under pan (3 removable sections)
Ears on walking beam for stops

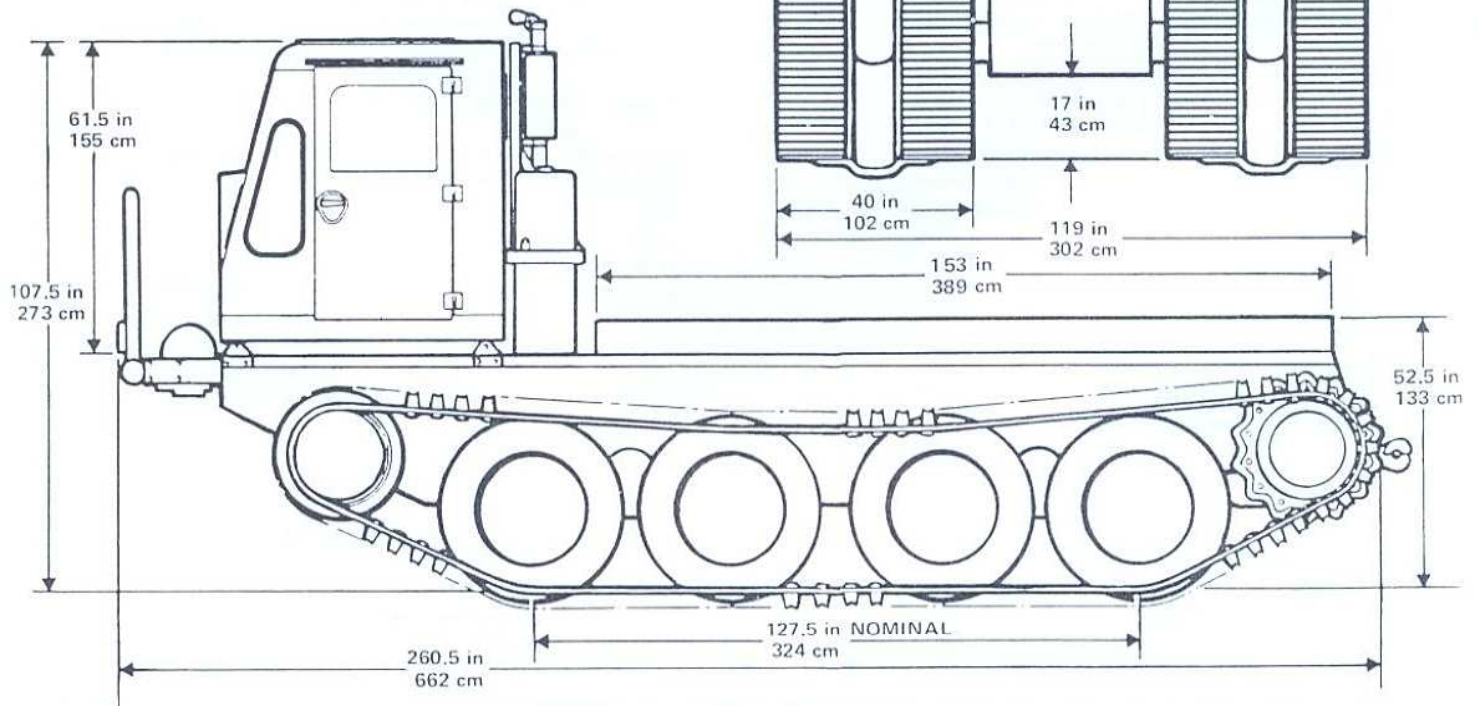
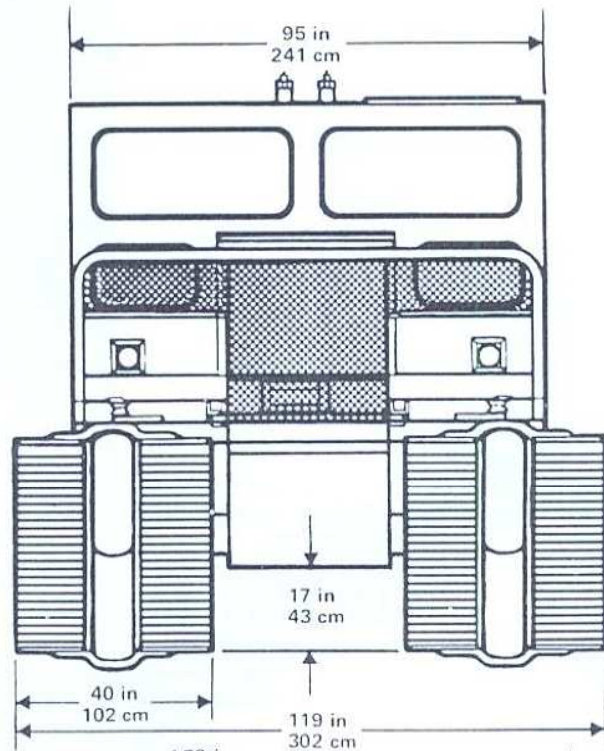
OPTIONS AVAILABLE including diesel engines and automatic transmissions.

Subject to change without notice

FN 160



NOTES

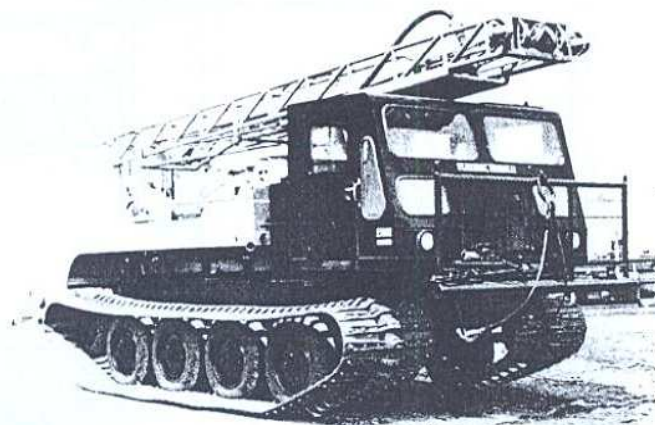


STANDARD SPECIFICATIONS FOR MODEL

Flextrac

P.O. BOX 5544, STATION A • 1201 42nd AVE. S.E., CALGARY, ALBERTA
TELEPHONE 287-2280 • AREA CODE 403 • TELEX NO. 038-21566

REPRESENTED BY



Weight — basic	18200 lb 8240 kg	Overall height	113 in 287 cm
Payload	12000 lb 5440 kg	Overall length	252 in 640 cm
Gross weight	30200 lb 13660 kg	Frame section modulus	147 cu in 2409.33 cm ²
Track area at 6" penetration	12040 sq in 7.76 m ²	Maximum speed	14.6 mph 23.5 km/h
Ground pressure — unloaded	1.51 psi 0.106 kg/cm ²	Ground clearance — loaded	16 in 41 cm
— loaded	2.52 psi 0.177 kg/cm ²	Turning radius — minimum inside	103 in 262 cm
Overall width — tracks on	119 in 302 cm	Fording depth	48 in 112 cm
— tracks off	95 in 241 cm	Climbing ability — grade	60 %
		Sidehill ability — grade	40 %

Power Train:

Engine — Ford 391 C.I.D. V-8 Industrial gasoline
Transmission — Spicer 5652 — 5-speed forward, 1 reverse
Clutch — 14" hydraulic controls
Final Drive — Controlled planetary differential in oil bath
4.5:1 reduction
— outer planetaries 3.6:1 reduction

Steering — Lever controlled pneumatic power
Brakes — Lever/Push button emergency and parking
— pneumatic power differential brakes

Electrical:

Alternator — 60 amp, 12 volt
Battery — 70 amp/hr, HD

Pintle hook
Brush guard
Mufflers
Exhaust pipe rain caps

Running Gear:

Load Wheels — Rims: 6:50 x 20, 10-stud, H.D.
— Tires: 7:50 x 20, 12-ply smooth
Suspension — Crank arm with 57 lb. torsion coil spring

Tracks — Rubber belt and spring steel drop centre
grousers

Sprockets — Steel with replaceable urethane inserts
Elevated front idlers — Solid rubber tires

Cab:

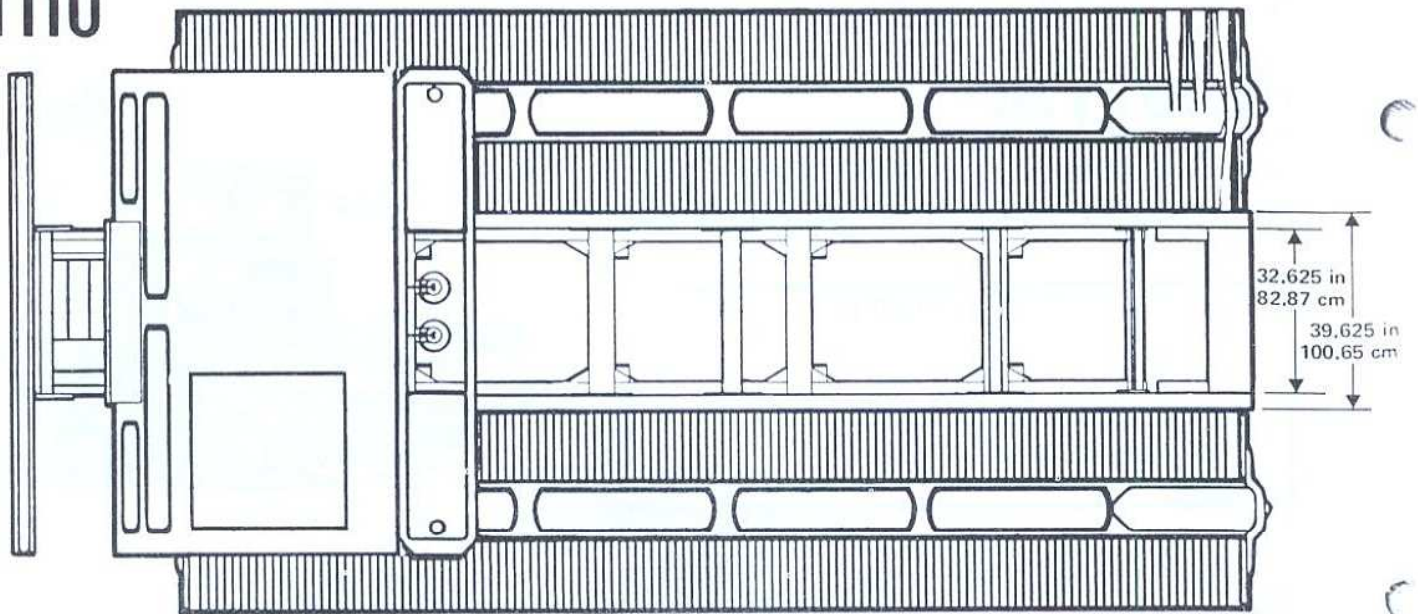
Three-man, steel; tiltable, roll down windows, sprung
seats and jump seat; escape hatch; domelight; headlights;
panel light; wipers — two speed; manual choke; heaters
and defrosters; fuel capacity — 76 imp gallons (345 litres);
Color — International orange. eng. compartment light.
Instruments — Temperature gauge; ammeter; oil gauge; hour-
meter; fuel gauge.

Operator's, maintenance and parts manuals (2 sets)
Tool kit
Antifreeze

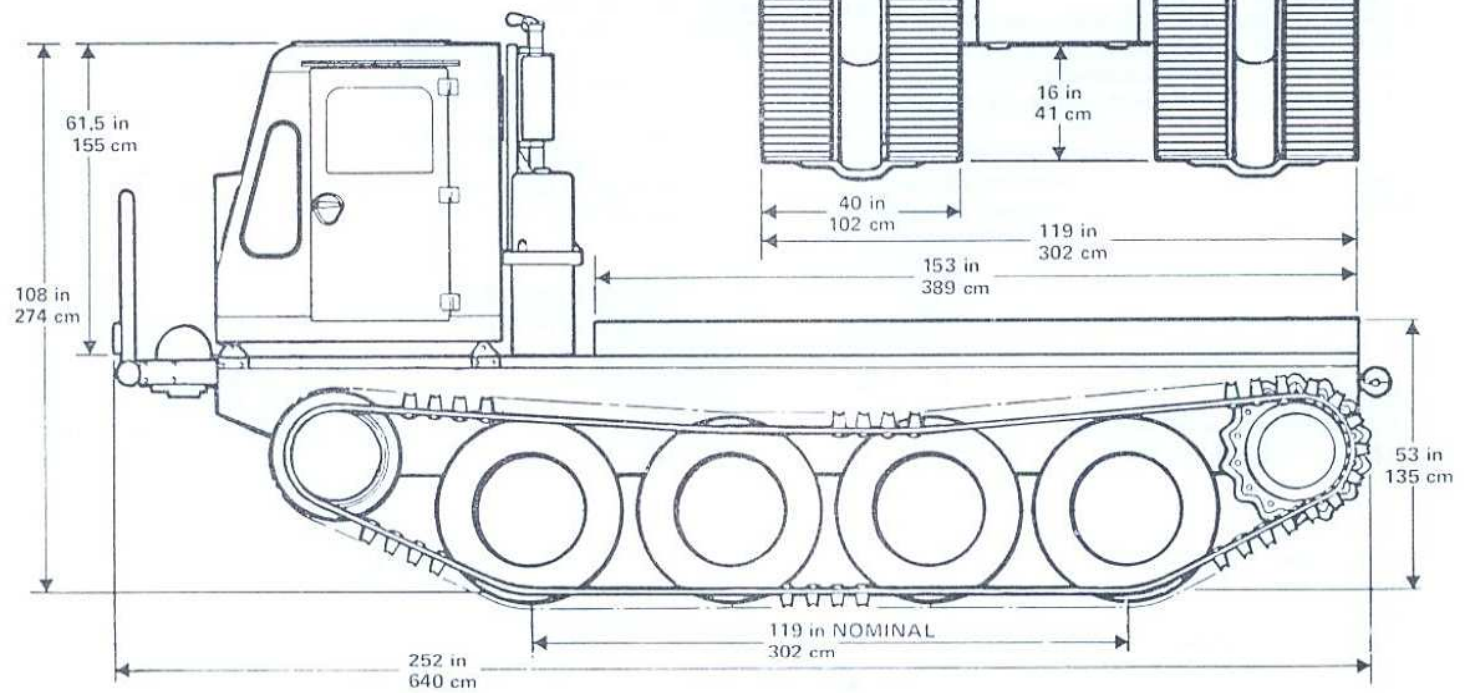
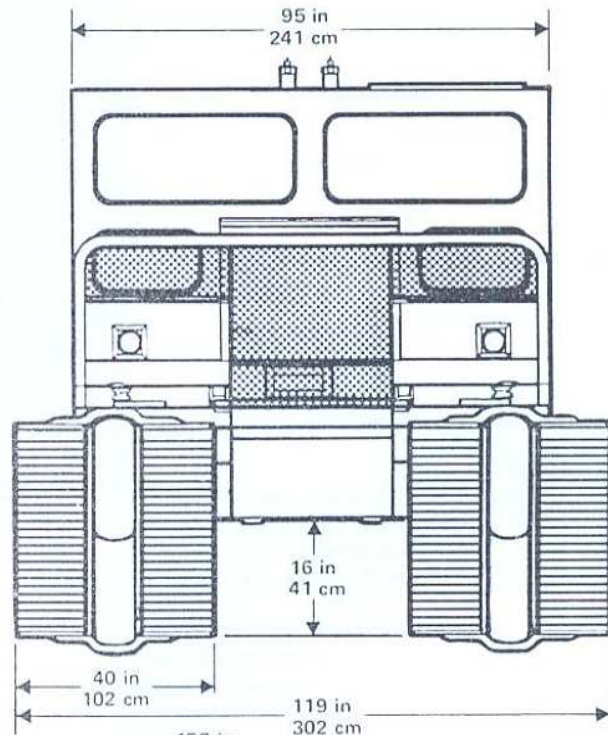
OPTIONS AVAILABLE including diesel engines and automatic transmissions.

Subject to change without notice

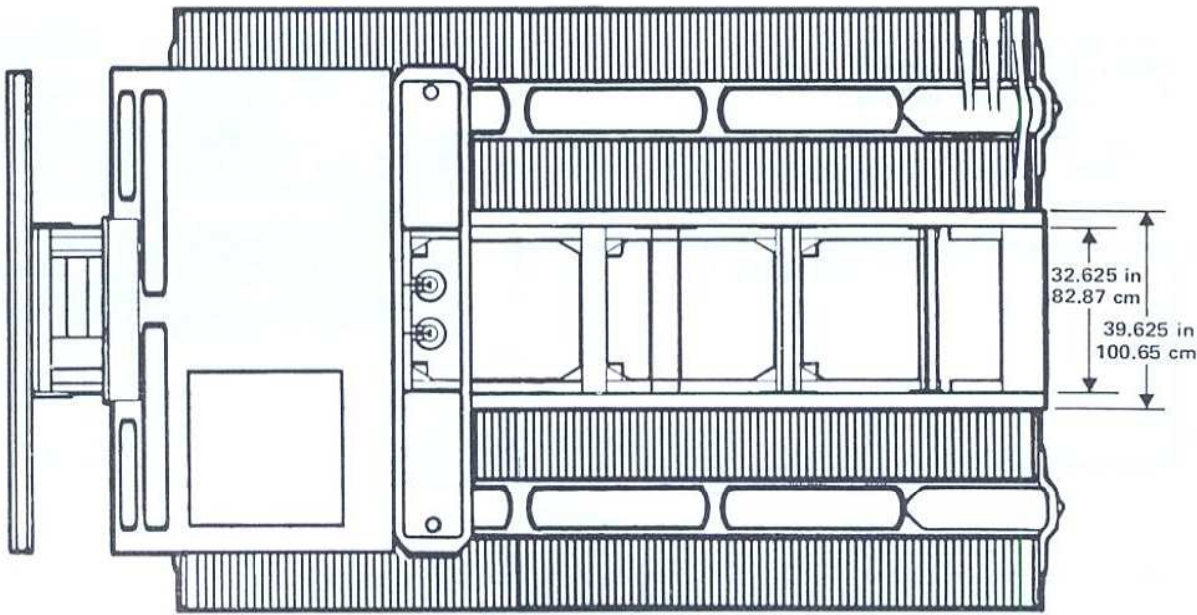
FN110



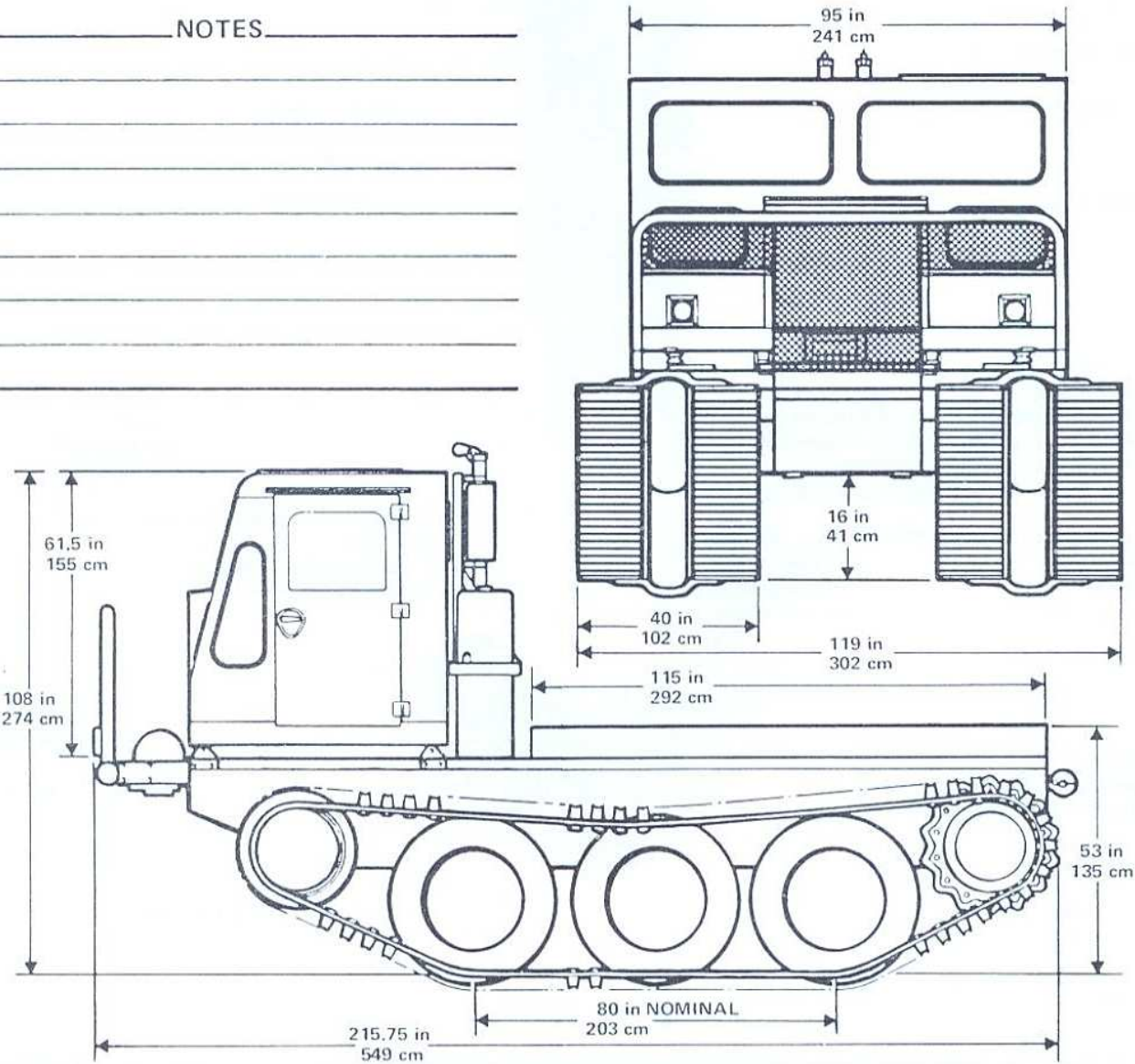
NOTES



FN 75



NOTES



STANDARD SPECIFICATIONS FOR MODEL

Flextrac

P.O. BOX 5544, STATION A • 1201 42nd AVE. S.E., CALGARY, ALBERTA
TELEPHONE 287-2280 • AREA CODE 403 • TELEX NO. 038-21566

REPRESENTED BY



Weight — basic	15500 lb 7020 kg	Overall height	113 in 287 cm
Payload	8000 lb 3640 kg	Overall length	215.75 in 548 cm
Gross weight	23500 lb 10680 kg	Frame section modulus	147 cu in 2409.3 cm ²
Track area at 6" penetration	8900 sq in 5.78 m ²	Maximum speed	14.6 mph 23.5 km/h
Ground pressure — unloaded	1.74 psi 0.122 kg/cm ²	Ground clearance — loaded	16 in 41 cm
— loaded	2.64 psi 0.185 kg/cm ²	Turning radius — minimum inside	103 in 262 cm
Overall width — tracks on	119 in 302 cm	Fording depth	48 in 112 cm
— tracks off	95 in 241 cm	Climbing ability — grade	60 %
		Sidehill ability — grade	40 %

Power Train:

Engine — Ford 391 C.I.D. V-8 Industrial gasoline
Transmission — Spicer 5652 — 5-speed forward, 1 reverse
Clutch — 14" hydraulic controls
Final Drive — Controlled planetary differential in oil bath

— outer planetaries 3.6:1 reduction

Steering — Lever controlled pneumatic power
Brakes — Lever/Push button emergency and parking
— pneumatic power differential brakes

Electrical:

Alternator — 60 amp, 12 volt
Battery — 70 amp/hr, HD

Pintle hook
Brush guard
Mufflers
Exhaust pipe rain caps

Running Gear:

Load Wheels — Rims: 6:50 x 20, 10-stud, H.D.
— Tires: 7:50 x 20, 12-ply smooth
Suspension — Crank arm with 57 lbs. torsion coil spring

Tracks — Rubber belt and spring steel drop centre
grousers

Sprockets — Steel with replaceable urethane inserts
Elevated front idlers — Solid rubber tires

Cab:

Three-man, steel; tiltable, roll down windows, sprung
seats and jump seat; escape hatch; domelight; headlights;
panel light; wipers — two speed; manual choke; heaters
and defrosters; fuel capacity — 76 imp gallons (345 litres);
Color — International orange.
Instruments — Temperature gauge; ammeter; oil gauge; hour-
meter; fuel gauge.

Operator's, maintenance and parts manuals (2 sets)
Tool kit
Antifreeze

OPTIONS AVAILABLE including diesel engines and automatic transmissions.

Subject to change without notice

STANDARD SPECIFICATIONS FOR MODEL

Flextrac

P.O. BOX 5544, STATION A • 1201 42nd AVE. S.E., CALGARY, ALBERTA
TELEPHONE 287-2280 • AREA CODE 403 • TELEX NO. 038-21566

REPRESENTED BY



Weight — basic	10400 lb 4710 kg	Overall height	94.5 in 240 cm
Payload	6000 lb 2720 kg	Overall length	204.75 in 520 cm
Gross weight	16400 lb 7440 kg	Frame section modulus	89.7 cu in 1469.9 cm ³
Track area at 6" penetration	8958 sq in 5.79 m ²	Maximum speed at 3800 eng rpm	12.2 mph 19.68 km/h
Ground pressure — unloaded	1.18 psi 0.083 kg/cm ²	Ground clearance — loaded	14.25 in 36 cm
— loaded	1.87 psi 0.131 kg/cm ²	Turning radius — minimum inside	104 in 264 cm
Overall width — tracks on	97.5 in 248 cm	Fording depth	42 in 106.8 cm
— tracks off	86 in 218.2 cm	Climbing ability — grade	60 %
		Sidehill ability — grade	40 %

Power Train:

Engine — Ford 240 C.I.D. 6-cylinder, Industrial gasoline

Transmission — New Process 435L, 4-speed forward,
1 reverse

Clutch — 12" hydraulic controls

Final Drive — Controlled planetary differential in circulated
oil bath c/w outer planetaries

Steering — Manual lever to hydraulic system

Brakes — Internal drum

Running Gear:

Load Wheels — Rims: 5:50 x 16, 6-stud FN split rim

— Tires: 6:00 x 16, 10-ply smooth

Suspension — Walking beams, urethane bearings

Tracks — Rubber belts and drop centre steel grouser

Sprockets — Steel with replaceable urethane inserts

Elevated front idlers — Solid rubber

Cab:

Two-man, steel; domelight; headlights; panel light; wipers
— two speed; manual choke; fuel capacity — 25 imp gallons

Color — International orange, 114 litres

Instruments — temperature gauge; ammeter; oil gauge; hour-
meter; fuel gauge.

Frame:

Welded tub

Electrical:

Alternator — 45 amp, 12 volt

Battery — 70 amp/hr, HD

Pintle hook

Muffler

Exhaust pipe rain caps

Operator's, maintenance and parts manuals (2 sets)

Tool kit

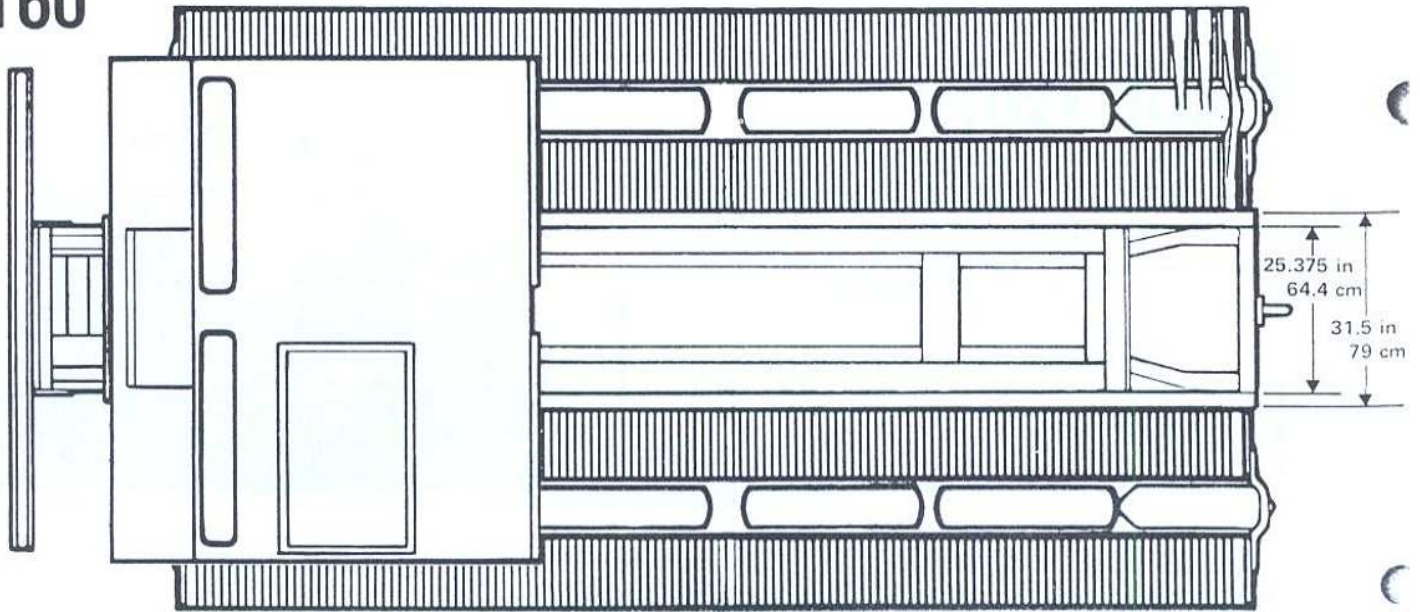
Antifreeze

Full under pan (3 removable sections)

OPTIONS AVAILABLE including diesel engines and automatic transmissions.

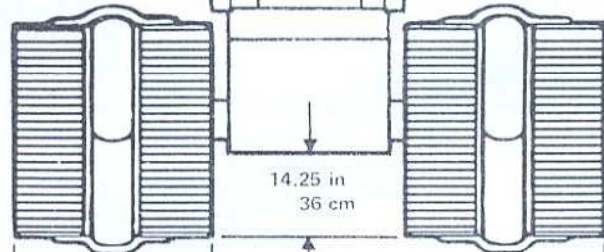
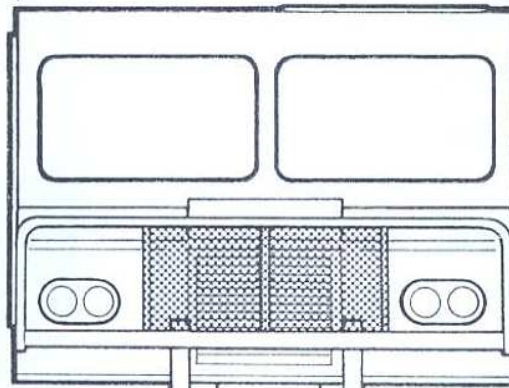
Subject to change without notice

FN 60



NOTES

72 in
183 cm



97.5 in
248 cm

112 in
284.5 cm

