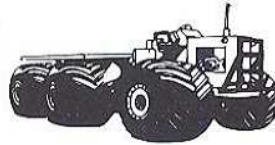


ROLLIGON CORPORATION

Low Ground Pressure Tires



**ROLLIGON
CORPORATION**
Manufacturer of Special Ground Equipment



72x68-28 Tires



54x68-25 Tires



72x68-28 Tires



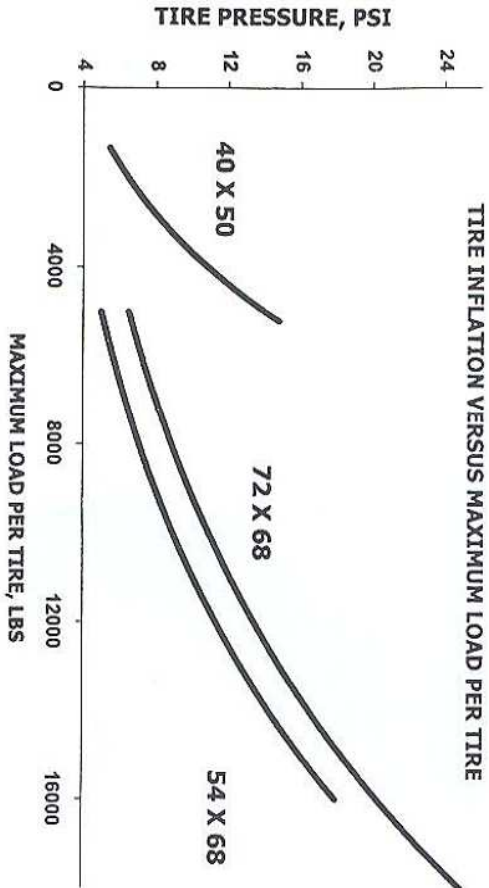
40x50-12 Tires

- High Flotation
- Vidar Protected Rubber
- Low Ground Compaction
- Cushions Impact Shocks
- Fits Most Axles
- Various Ply Ratings
- Low Rolling Resistance
- Engineered And
Manufactured To Meet
Your Off-Road Tire
Requirements

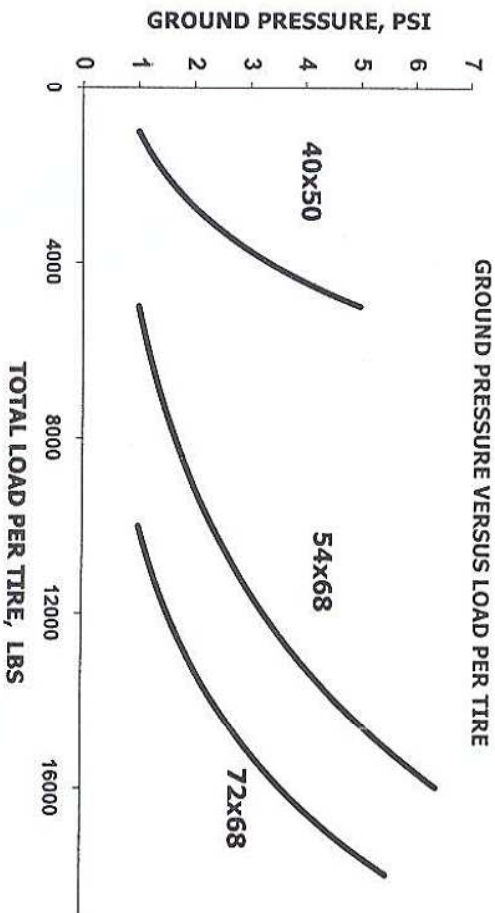
“Go Anywhere Any Time”

| TIRE MODEL | OVERALL DIAMETER | | OVERALL WIDTH | | BEAD OPENING ID | | BEAD THICKNESS | | TREAD DEPTH | | STATIC LOADED RADIUS | | ROLLING CIRCUMFERENCE | | FOOTPRINT AREA | | WHEEL WEIGHT | | TIRE WEIGHT | | DISPLACEMENT | | MAX TIRE LOAD | | MAX TIRE PRESSURE | | MAXIMUM SPEED | |
|----------------|------------------|-----|---------------|-------|-----------------|------|----------------|----------|-------------|-----|----------------------|------|-----------------------|-----|-----------------|-----------------|--------------|-----|-------------|-----|--------------|-------|---------------|------|-------------------|-----|---------------|-------|
| | in | cm | in | cm | in | cm | in | cm | in | cm | in | cm | in | cm | in ² | cm ² | lbs | kg | lbs | kg | lbs | kg | lbs | kg | psi | kPa | mph | km/hr |
| 40 X 50-12 V2 | 42.5 | 108 | 52.0 | 132.1 | 12.0 | 30.5 | 0.8 | 2.0 | 1.3 | 3.2 | 17.0 | 43.2 | 126 | 320 | 1000 | 6450 | 50 | 23 | 275 | 125 | 1750 | 793.8 | 5000 | 2268 | 15 | 103 | 25 | 40.2 |
| 40 X 50-12 V4 | 42.5 | 108 | 52.0 | 132.1 | 12.0 | 30.5 | 0.8 | 2.0 | 1.3 | 3.2 | 17.0 | 43.2 | 126 | 320 | 1000 | 6450 | 50 | 23 | 300 | 136 | 1750 | 793.8 | 5000 | 2268 | 15 | 103 | 25 | 40.2 |
| 54 X 68-18 V2 | 56.5 | 144 | 70.5 | 179.1 | 18.0 | 45.7 | 0.8 | 2.0 | 1.3 | 3.2 | 25.0 | 63.5 | 170 | 432 | 1800 | 11600 | 265 | 120 | 480 | 218 | 5000 | 2268 | 16000 | 7257 | 25 | 172 | 25 | 40.2 |
| 54 X 68-18 V4 | 56.5 | 144 | 70.5 | 179.1 | 18.0 | 45.7 | 0.8 | 2.0 | 1.3 | 3.2 | 25.0 | 63.5 | 170 | 432 | 1800 | 11600 | 265 | 120 | 540 | 245 | 5000 | 2268 | 16000 | 7257 | 25 | 172 | 25 | 40.2 |
| 54 X 68-18 V6 | 56.5 | 144 | 70.5 | 179.1 | 18.0 | 45.7 | 0.8 | 2.0 | 1.3 | 3.2 | 25.0 | 63.5 | 170 | 432 | 1800 | 11600 | 265 | 120 | 595 | 270 | 5000 | 2268 | 16000 | 7257 | 25 | 172 | 25 | 40.2 |
| 54 X 68-25 V2 | 56.5 | 144 | 70.5 | 179.1 | 25.0 | 63.5 | 0.8 | 2.0 | 1.3 | 3.2 | 25.0 | 63.5 | 170 | 432 | 1800 | 11600 | 265 | 120 | 470 | 213 | 5000 | 2268 | 16000 | 7257 | 25 | 172 | 25 | 40.2 |
| 54 X 68-25 V4 | 56.5 | 144 | 70.5 | 179.1 | 25.0 | 63.5 | 0.8 | 2.0 | 1.3 | 3.2 | 25.0 | 63.5 | 170 | 432 | 1800 | 11600 | 265 | 120 | 530 | 240 | 5000 | 2268 | 16000 | 7257 | 25 | 172 | 25 | 40.2 |
| 54 X 68-25 V6 | 56.5 | 144 | 70.5 | 179.1 | 25.0 | 63.5 | 0.8 | 2.0 | 1.3 | 3.2 | 25.0 | 63.5 | 170 | 432 | 1800 | 11600 | 265 | 120 | 580 | 263 | 5000 | 2268 | 16000 | 7257 | 25 | 172 | 25 | 40.2 |
| 72 X 68-28 V4 | 75.0 | 191 | 71.5 | 181.6 | 28.0 | 71.1 | 1.1 or 1.5 | 2.0 or 3 | 1.5 | 3.8 | 30.0 | 76.2 | 226 | 574 | 2850 | 18387 | 865 | 392 | 800 | 363 | 7500 | 3402 | 18000 | 8165 | 25 | 172 | 25 | 40.2 |
| 72 X 68-28 V6 | 75.0 | 191 | 71.5 | 181.6 | 28.0 | 71.1 | 1.1 or 1.5 | 2.0 or 3 | 1.5 | 3.8 | 30.0 | 76.2 | 226 | 574 | 2850 | 18387 | 865 | 392 | 1025 | 465 | 7500 | 3402 | 18000 | 8165 | 25 | 172 | 25 | 40.2 |
| 72 X 68-28 HDL | 75.0 | 191 | 71.5 | 181.6 | 28.0 | 71.1 | 1.1 or 1.5 | 2.0 or 3 | 1.5 | 3.8 | 30.0 | 76.2 | 226 | 574 | 2850 | 18387 | 865 | 392 | 960 | 435 | 7500 | 3402 | 18000 | 8165 | 25 | 172 | 25 | 40.2 |

TIRE INFLATION VERSUS MAXIMUM LOAD PER TIRE



GROUND PRESSURE VERSUS LOAD PER TIRE



1. WHEELS MANUFACTURED TO FIT YOUR SPECIFIC VEHICLE.
2. TIRE SIZES OF 72X68-28 AND 72X68-28 AVAILABLE AS SPECIAL ORDER ITEMS.
3. MOST SIZES AVAILABLE WITHOUT LUGS FOR YOUR ENVIRONMENTALLY SENSITIVE APPLICATION.
4. ALWAYS FOLLOW TIRE INFLATION CHART FOR MAXIMUM TIRE PERFORMANCE AND LIFE.
5. FOOTPRINT AREA VARIES WITH INFLATION PRESSURE, TERRAIN SOFTNESS, AND TIRE LOAD.
6. ROLLIGON TIRES ARE MANUFACTURED FOR OFF ROAD USE. USE ON PAVED ROADWAYS WILL RESULT IN INCREASED WEAR.
7. U.S. AND FOREIGN PATENTS APPLY.
8. ALL TIRE APPLICATIONS SHALL BE CONFIRMED BY ROLLIGON CORPORATION.

For additional information please contact:

ROLLIGON CORPORATION

10635 BRIGHTON LANE
STAFFORD, TEXAS 77477 U.S.A.
TELEPHONE: (281) 495-1140
FAX: (281) 495-1145
INTERNET: www.rolligon.com

ROLLIGON HEAVY DUTY OFF ROAD TIRES

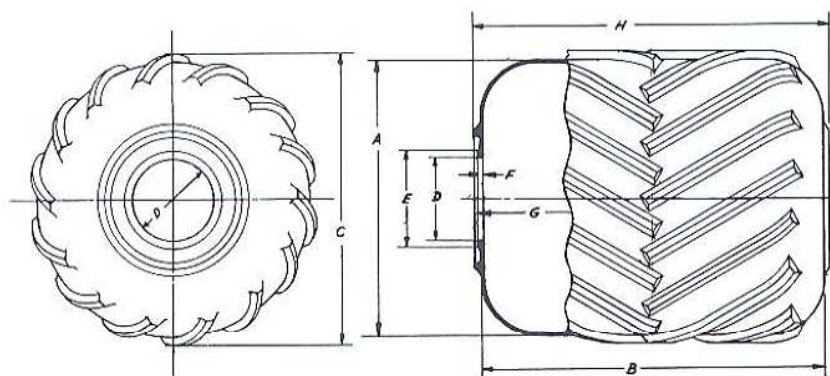
Low Pressure - Super Wide (LPSW)

72"x68"-28" ROLLIGON TIRE

Ideal For Log Skidder/Forwarder
Applications in Soft Ground.
(LT - Logger Special**)
Available in V2 - V4 - V6
& Logger Strength Grades



TIRE DIMENSIONS



| | | |
|------------|-------|-------------|
| LPSW 68 V2 | - 68" | Wide 20 Ply |
| LPSW 68 V4 | - 68" | Wide 40 Ply |
| LPSW 68 V6 | - 68" | Wide 60 Ply |
| LPSW 68 LT | - 68" | Wide Logger |
| LPSW 82 V2 | - 82" | Wide 20 Ply |
| LPSW 82 V4 | - 82" | Wide 40 Ply |
| LPSW 82 V6 | - 82" | Wide 60 Ply |
| LPSW 82 LT | - 82" | Wide Logger |

| | | | |
|--------------------|-------|----------|-----------|
| A. Carcass Dia., | _____ | 72.0 in. | 183.0 cm. |
| B. Carcass Width, | _____ | 68.0 in. | 172.7 cm. |
| C. Dia. over Lugs, | _____ | 75.0 in. | 190.5 cm. |
| D. Bead Hole I.D. | _____ | 28.0 in. | 71.1 cm. |
| E. Bead O.D., | _____ | 31.5 in. | 80.0 cm. |
| F. Bead Thickness, | _____ | 1.2 in. | 3.2 cm. |

| | | | |
|---------------------------|-------|----------|-----------|
| G. Width over Bead Faces, | _____ | 69.0 in. | 175.3 cm. |
| H. Width over Bead Guards | _____ | 71.5 in. | 181.6 cm. |

Same Tire Available in 82 inch (208 cm)
Tread width. Specify LPSW 82 (LT)**

STANDARD TIRE DATA

| | | | | | | | |
|-------------------------|-------|----------|-----------|-----------------|-------|--------------|----------------|
| Weight, V6: | _____ | 675 lbs. | 306 kgms. | Max. Flotation, | _____ | 7,500 lbs. | 3402 kgms. |
| Average Footprint Area, | _____ | | | | _____ | 2850 sq. in. | 18,387 sq. cm. |

NOTE: Footprint area varies to Inflation Pressure, Terrain Softness, and Tire Load

RECOMMENDED MAXIMUM TIRE LOAD – STANDARD MOUNTING

| Inflation Pressure, psi | 3 | 5 | 7 | 10 | 13 | 15 |
|-------------------------|-------|-------|-------|--------|--------|--------|
| *Max. Tire Load, lbs. | 3,250 | 5,000 | 7,000 | 13,300 | 15,500 | 17,687 |
| Max. Tire Load, kgms. | 1,474 | 2,268 | 3,175 | 6,032 | 7,027 | 8,023 |

** Loggins Tire Incorporates Special Sidewall Reinforcement.

When ordering specify: "LT" suffix.

* V-4 Tire. Retro fits on many off road vehicles with Wheel Adapter Kit #A10942.

Specification No. RT (8-89)

ROLLIGON TIRE

Low Pressure - Xtra Super Wide (LPXSW)

72"x96"-28"

Low Pressure — High Floatation Tire for Off Road Applications Only.

Tire Manufactured by Rolligon Corporation..

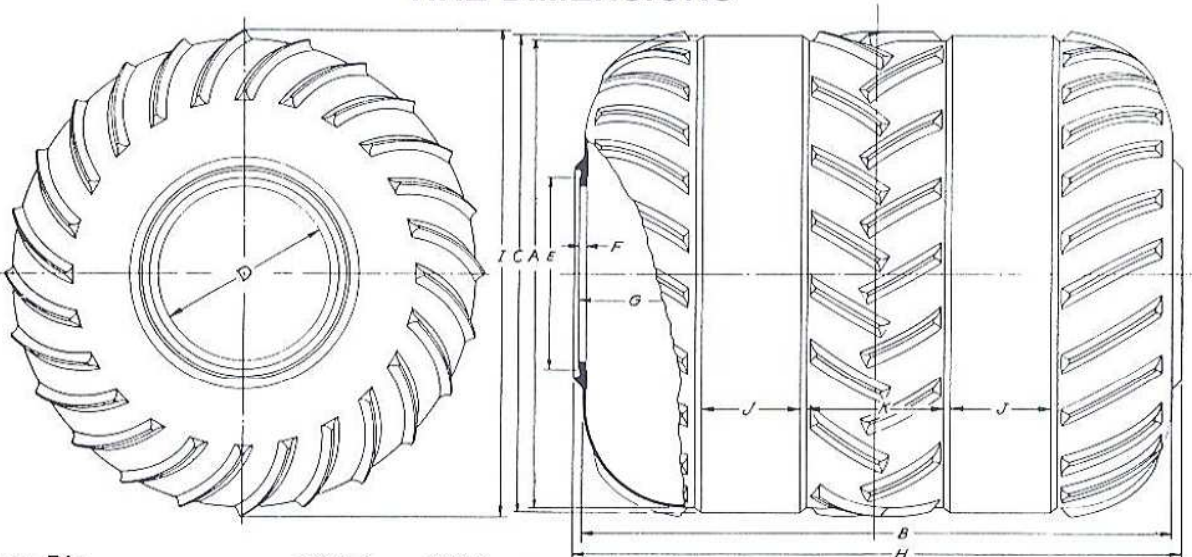
Cleats are an integral part of tire,
molded into tire at curing — not glued on after cure.

This tire is available in three grades.

- Vidar V-2 = 20 ply rating
- Vidar V-4 = 40 ply rating
- Vidar V-6 = 60 ply rating



TIRE DIMENSIONS



| | | | | | |
|--------------------|----------|-----------|------------------------------|----------|-----------|
| A. Carcass Dia., | 72.0 in. | 183.0 cm. | G. Width over Bead Faces, | 97.0 in. | 246.4 cm. |
| B. Carcass Width, | 96.0 in. | 244.0 cm. | H. Width over Bead Guards | 98.5 in. | 250.2 cm. |
| C. Dia. over Lugs, | 75.0 in. | 190.5 cm. | I. Dia. over Wear Pad Width, | 74.0 in. | 188.0 cm. |
| D. Bead Hole I.D. | 28.0 in. | 71.1 cm. | J. Wear Pad Width. | 14.0 in. | 35.5 cm. |
| E. Bead O.D., | 31.0 in. | 78.7 cm. | K. Wear Pad Spacing | 26.0 in. | 66.0 cm. |
| F. Bead Thickness, | 1.2 in. | 3.2 cm. | | | |

STANDARD TIRE DATA

Weight, _____ 1275 lbs.____578 kgms. Max. Flotation,____13,000 lbs.____5897 kgms.
Average Footprint Area, _____ 3857 sq. in.____24.890 sq. cm.

NOTE: Footprint area varies to Inflation Pressure, Terrain Softness, and Tire Load

MAXIMUM TIRE LOAD — STANDARD MOUNTING

| Inflation Pressure, psi | 6 | 9 | 12 | 15 | 18 |
|-------------------------|--------|--------|--------|--------|--------|
| Max. Tire Load, lbs. | 11,000 | 17,000 | 23,000 | 29,000 | 35,000 |
| Max. Tire Load, kgms. | 4,989 | 7,711 | 10,432 | 13,154 | 15,876 |

ROLLIGON CORPORATION

10635 Brighton Lane • Stafford, Texas 77477 U.S.A.

Telephone: (713) 495-1140 • Fax: (713) 495-1145 • Telex: 79-0515 Rolligon

Specification No. RT 777

40''x50''-12'' ROLLIGON TIRE

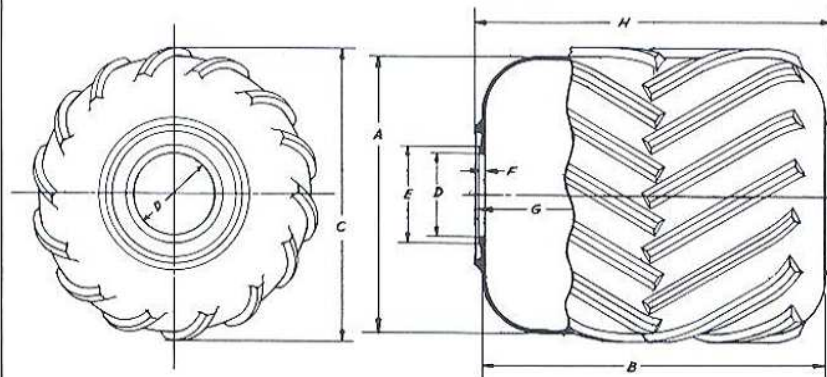
Types—Lugged Only
for Axle Loading



This tire is available in three grades and one type.

- Standard Lugged = 08 Ply Rating
- Vidar V-2 Lugged = 20 Ply Rating
- Vidar V-4 Lugged = 40 Ply Rating

TIRE DIMENSIONS



| | In. | Cm. |
|---------------------------------|------|-------|
| A. Carcass Dia. _____ | 40.0 | 101.6 |
| B. Carcass Width _____ | 50.0 | 127.0 |
| C. Dia. over Lugs _____ | 42.5 | 108.0 |
| D. Bead Hole I.D. _____ | 12.0 | 30.5 |
| E. Bead O.D. _____ | 14.0 | 35.6 |
| F. Bead Thickness _____ | 0.8 | 2.0 |
| G. Width over Bead Faces _____ | 51.0 | 130.0 |
| H. Width over Bead Guards _____ | 52.0 | 132.1 |

STANDARD TIRE DATA

Weight, _____ 275 lbs.____124.7 kgms. Max Flotation, _____1750 lbs.____794 kgms.
Average Footprint Area, _____ 1000 sq. in.____6,451 sq. cm.

NOTE: Footprint area varies to Inflation Pressure, Terrain Softness, and Tire Load

MAXIMUM TIRE LOAD — AXLE LOADED

| Inflation Pressure, psi | 2 | 4 | 6 | 8 | 10 |
|-------------------------|-------|-------|-------|-------|-------|
| Max. Tire Load, lbs. | 1,000 | 2,000 | 3,000 | 4,000 | 5,000 |
| Max. Tire Load, kgms. | 453 | 907 | 1,360 | 1,815 | 2,268 |

Rolligon tires shown in this brochure are designed to be used on natural ground surfaces.

If used on surfaced roadways excessive wear will result.

All tire use applications and loadings shall be confirmed by Rolligon Corporation.

ROLLIGON CORPORATION

10635 Brighton Lane
Stafford, Texas 77477 U.S.A.

Telephone: (713) 495-1140; Fax: (713)495-1145
Telex: 79-0515 Rolligon

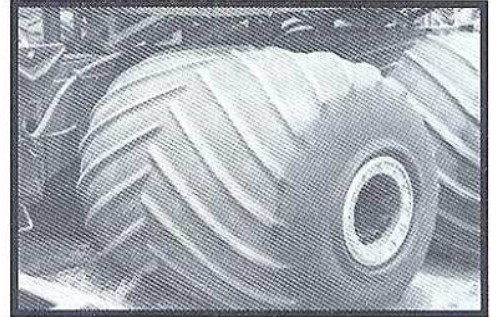
ROLLIGON TIRES



54"x68"

- Full Body Cleat
- Top Roller Pads
- Smooth

U.S. Patent #3,799,617



Lugs and Top Wear Pads

- Ply Rating
- Standard = 08
 - Vidar V-2 = 20
 - Vidar V-4 = 40
 - Vidar V-6 = 60

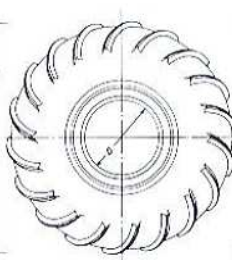
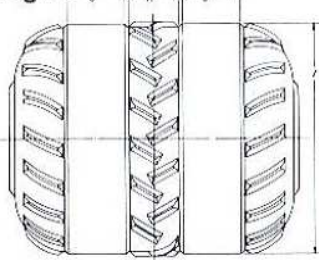
Types—Lugs Only for Axle Loading: Wear Pads and Lugs and Smooth for Top Roller Loading

Lugs Only

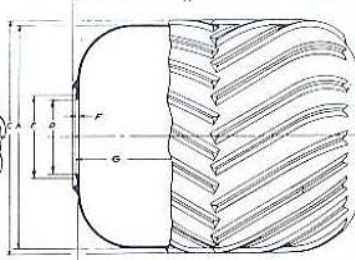
- Ply Rating
- Standard = 08
 - Vidar V-2 = 20
 - Vidar V-4 = 40
 - Vidar V-6 = 60

TIRE DIMENSIONS

Wear Pads and Lugs



Lugs Only



- A. Carcass Dia., _____ 54.0 in. 137.2 cm.
 B. Carcass Width, _____ 68.0 in. 172.7 cm.
 C. Dia. over Lugs, _____ 56.5 in. 143.5 cm.
 *D. Bead Hole I.D. _____ 18.0 in. 45.7 cm.
 E. Bead O.D., _____ 20.0 in. 50.8 cm.
 F. Bead Thickness, _____ 0.8 in. 2.0 cm.

- G. Width over Bead Faces, _____ 69.0 in. 175.3 cm.
 H. Width over Bead Guards _____ 70.5 in. 179.1 cm.
 I. Dia. over Wear Pads, _____ 55.5 in. 141.0 cm.
 J. Wear Pad Width. _____ 12.0 in. 30.5 cm.
 K. Wear Pad Spacing _____ 14.0 in. 35.6 cm.

*Also available in 25.0 in (63.5 cm) Bead Opening

STANDARD TIRE DATA

Weight, Lugs Only _____ 400 lbs. _____ 180 kgms.; Lugs and Top Roller Wear Pads _____ 500 lbs. _____ 230 kgms.

Flotation, _____ 5,000 lbs. _____ 2268 kgms.

Average Footprint Area, _____ 1800 sq. in. _____ 11,612 sq. cm.

NOTE: Footprint area varies to Inflation Pressure, Terrain Softness, and Tire Load

MAXIMUM TIRE LOAD — AXLE LOADED

| Inflation Pressure, psi | 2 | 4 | 6 | 8 | 10 |
|-------------------------|-------|-------|-------|-------|--------|
| Max. Tire Load, lbs. | 2,500 | 4,000 | 6,000 | 8,000 | 10,000 |
| Max. Tire Load, kgms. | 1,130 | 1,810 | 2,720 | 3,620 | 4,536 |

MAXIMUM TIRE LOAD — TOP ROLLER LOADED

| | 2 | 4 | 6 | 8 | 10 | 12 | 14 | 16 |
|-----------------------|-------|-------|-------|-------|--------|--------|--------|--------|
| Max. Tire Load, lbs. | 3,000 | 5,000 | 7,000 | 9,000 | 10,000 | 12,000 | 14,000 | 16,000 |
| Max. Tire Load, kgms. | 1,360 | 2,268 | 3,170 | 4,100 | 4,536 | 5,450 | 6,360 | 7,260 |

Lugs molded into tire carcass at cure - not glued on after cure.