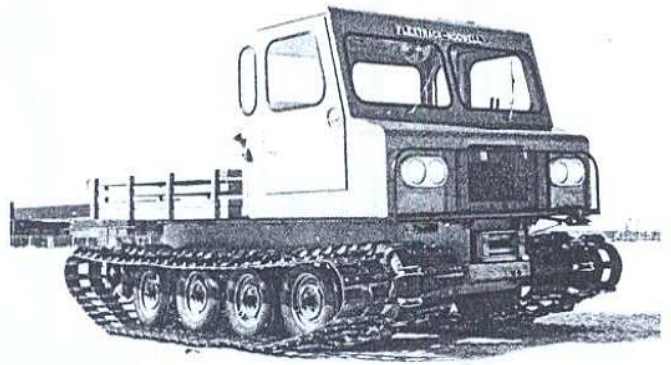


STANDARD SPECIFICATIONS FOR MODEL

Flextrac

P.O. BOX 5544, STATION A • 1201 42nd AVE. S.E., CALGARY, ALBERTA
TELEPHONE 287-2280 • AREA CODE 403 • TELEX NO. 038-21566

REPRESENTED BY



Weight — basic	5600 lb	Overall height	85 in
	2540 kg		216 cm
Payload	2000 lb	Overall length	156 in
	907 kg		396 cm
Gross weight	7600 lb	Maximum speed	27 mph
	3450 kg	at 4000 eng. rpm	43.3 km/h
Track area at	28" track	36" track	
6" penetration	6550 sq in	8420 sq in	
	4.23 m ²	5.44 m ²	
Ground pressure	0.86 psi	0.67 psi	
— unloaded	0.061 kg/cm ²	0.047 kg/cm ²	
— loaded	1.16 psi	0.090 psi	
	0.082 kg/cm ²	0.063 kg/cm ²	
Overall width	88.5 in	96.5 in	
	224 cm	245 cm	
— tracks off	72 in		
	183 cm		
		Ground clearance — loaded	12 in
			30.25 cm
		Turning radius — minimum inside	100 in
			254 cm
		Fording depth	32 in
			81 cm
		Climbing ability — grade	60 %
		Sidehill ability — grade	40 %

Power Train:

Engine — Ford 200 C.I.D. 6-cylinder Industrial gasoline
Transmission — 4-speed
Clutch — 10" hydraulic controls
Final Drive — Controlled planetary differential in oil bath
Steering — Manual lever to hydraulic system
Brakes — Differential

Electrical:

Alternator — 42 amp, 12 volt
Battery — 70 amp/hr

Pintle hook
Retainers — hold door open
Mufflers

Running Gear:

Load Wheels — 4:50 x 13, 5-stud
— 6:50 x 13, 4-ply
Suspension — Crank arm and torsion coil springs
Tracks — Rubber belt and spring steel drop centre grousers
Sprockets — Steel with replaceable urethane inserts
Elevated front idlers

Cab:

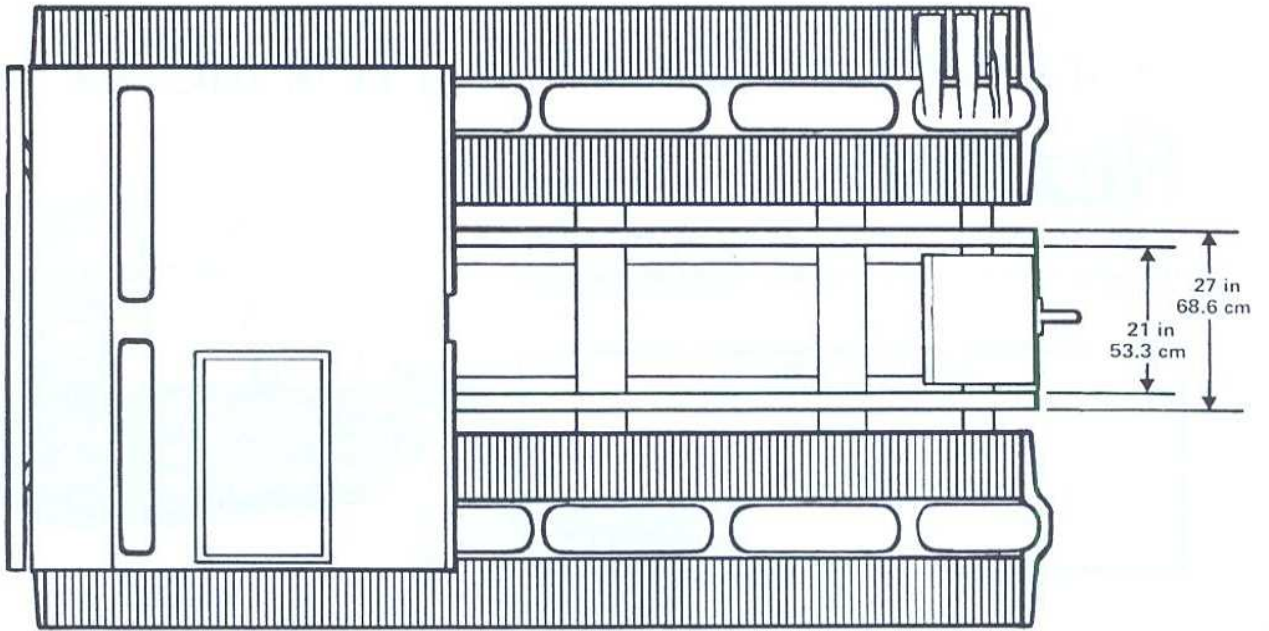
Two-man, steel; bucket seats; domelight; headlights; panel light; wipers; automatic choke; fuel capacity — 25 imp gallons (114 litres).
Color — International orange.
Instruments — Temperature gauge; ammeter; oil gauge; hour-meter; fuel gauge.

Operator's, maintenance and parts manuals (2 sets)
Tool kit
Antifreeze

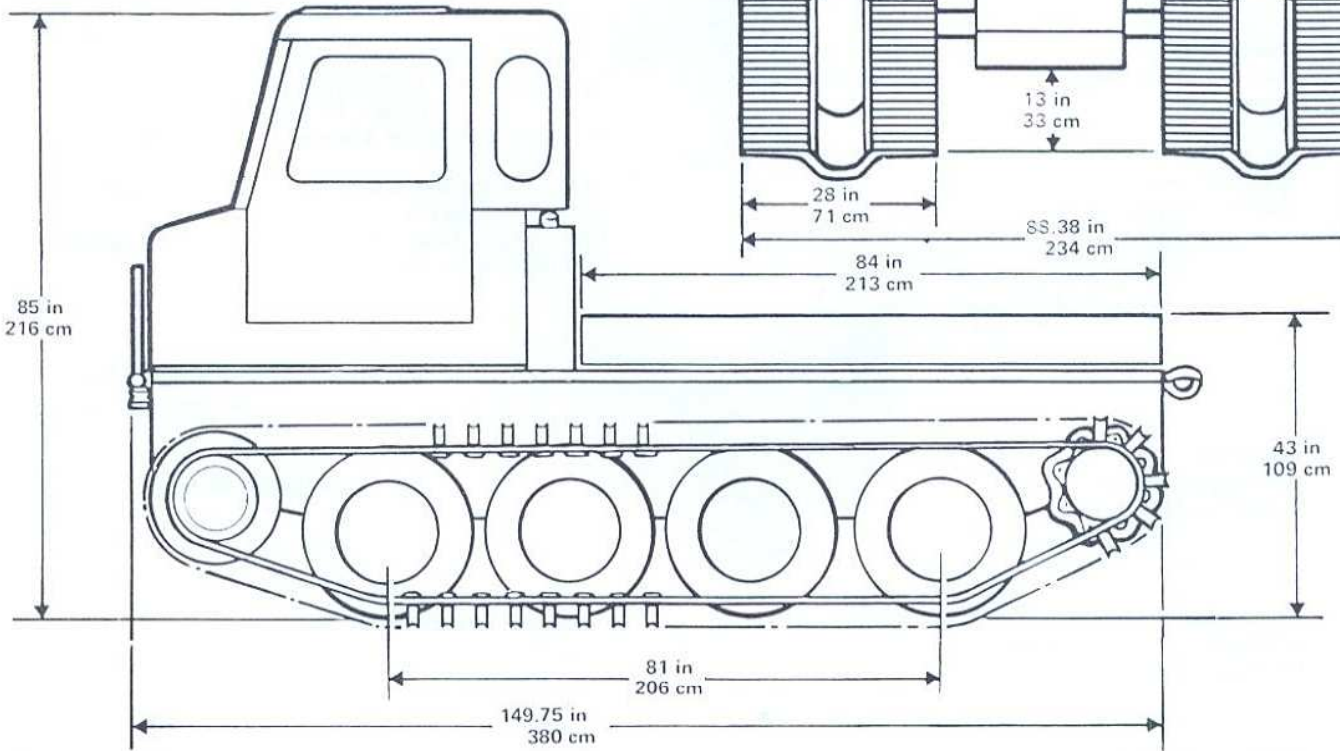
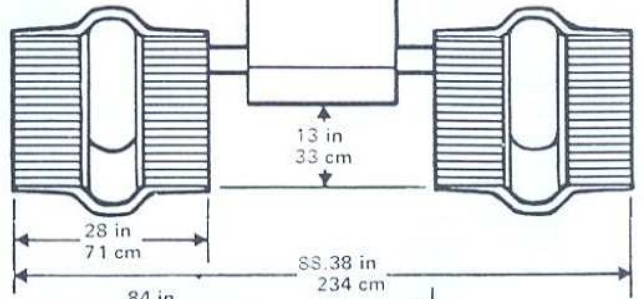
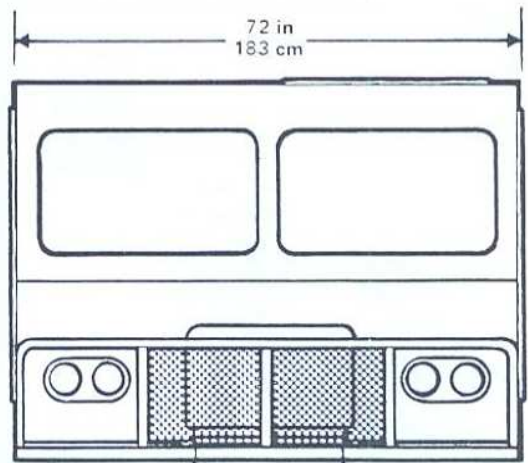
OPTIONS AVAILABLE including diesel engines and automatic transmissions.

Subject to change without notice

FN 20



NOTES



STANDARD SPECIFICATIONS FOR MODEL

Flextrac

P.O. BOX 5544, STATION A • 1201 42nd AVE. S.E., CALGARY, ALBERTA
TELEPHONE 287-2280 • AREA CODE 403 • TELEX NO. 038-21566

REPRESENTED BY



Weight – basic	5200 lb 2360 kg	Overall height	85.00 in 216 cm
Payload	1500 lb 680 kg	Overall length	156.00 in 396 cm
Gross weight	6700 lb 3040 kg		
Track area at 6" penetration	9000 sq in 5.8 m ²	Maximum speed at 4000 eng rpm	27 mph 43.4 km/h
Ground pressure – unloaded	0.578 psi 0.041 kg/cm ²	Ground clearance – loaded	12 in 30.25 cm
– loaded	0.745 psi 0.053 kg/cm ²	Turning radius – minimum inside	100 in 254 cm
Overall width – tracks on	96 in 244 cm	Fording depth	26 in 66 cm
– tracks off	72 in 183 cm	Climbing ability – grade	70 %+
		Sidehill ability – grade	60 %+

Power Train:

Engine – Ford 250 C.I.D. 6-cylinder gasoline
Transmission – 4-speed
Clutch – 10" hydraulic
Final Drive – Controlled planetary differential in oil bath

Steering – Manual levers to hydraulic system
Brakes – Differential

Electrical:

Alternator – 42 amp, 12 volt
Battery – 70 amp/hr

Pintle hook
Block heater – 400 watt
Mufflers
Retainers – hold door open

Running Gear:

Load Wheels – Rims: 4:50 x 13, 5-stud
– Tires: 6:50 x 13, 4-ply
Suspension – Crank arm with torsion coil spring

Tracks – Special snow design – rubber belts with steel grousers and traction cleats
Sprockets – Steel with urethane
Elevated front idlers

Cab:

Two man, steel; bucket seats; domelight; headlights; illuminated instruments; wipers; automatic choke; heaters and defrosters; fuel capacity - 25 imperial gallons (114 liters); Color - International orange

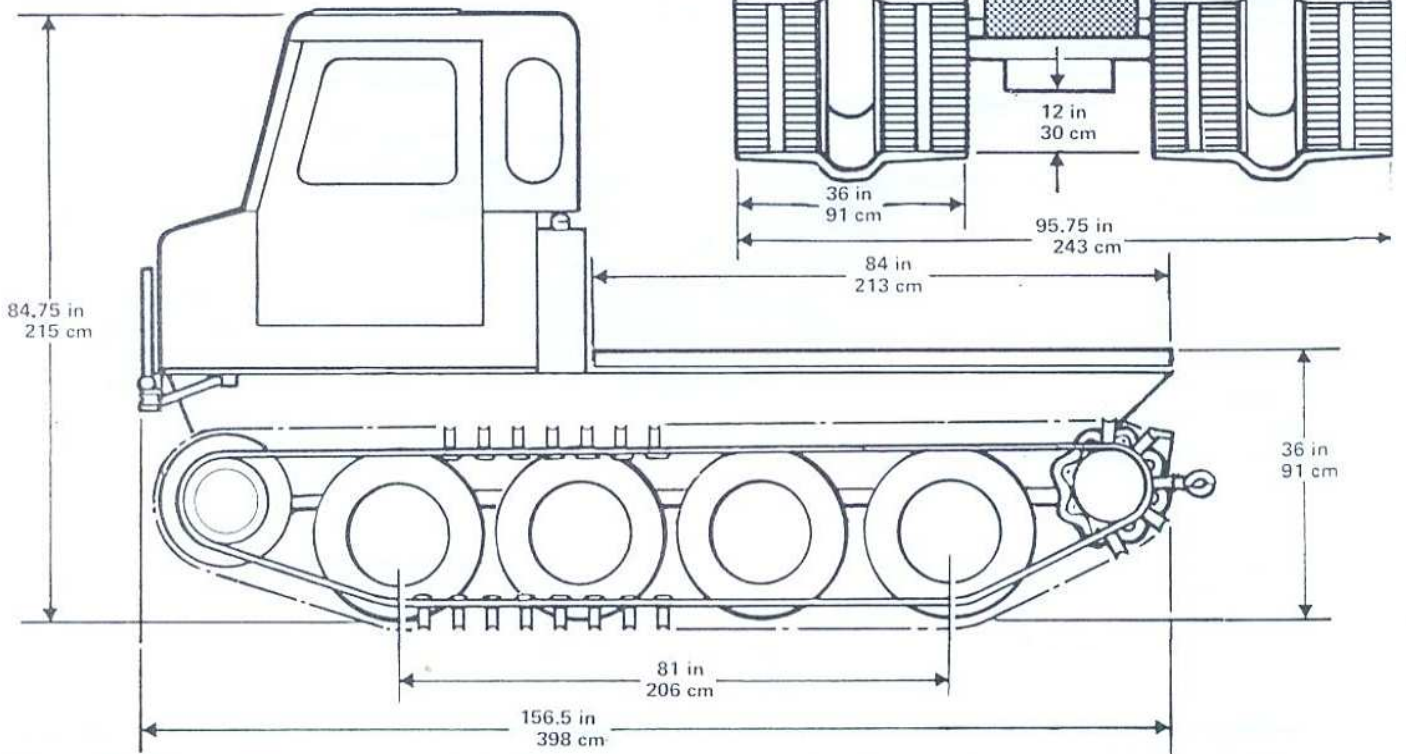
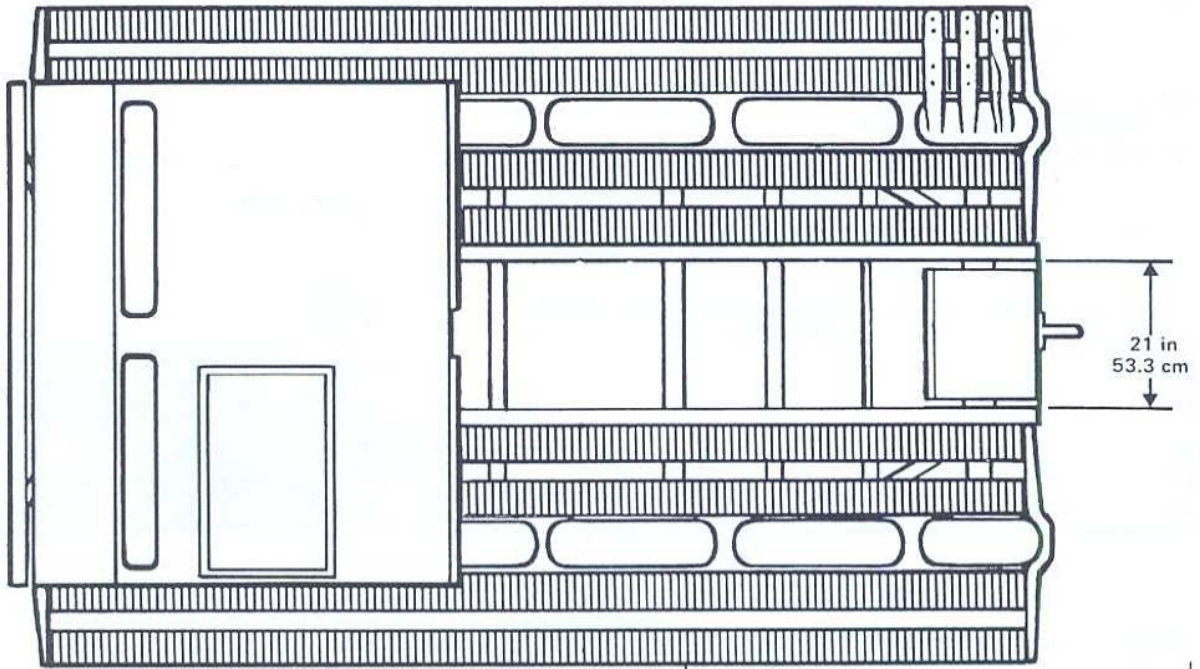
Instruments – Temperature gauge; ammeter; oil gauge; hour-meter; fuel gauge.

Operator's, maintenance and parts manuals,(2 sets)
Tool kit
Antifreeze
Grill guard

OPTIONS AVAILABLE including diesel engines and automatic transmissions.

Subject to change without notice

FN 15

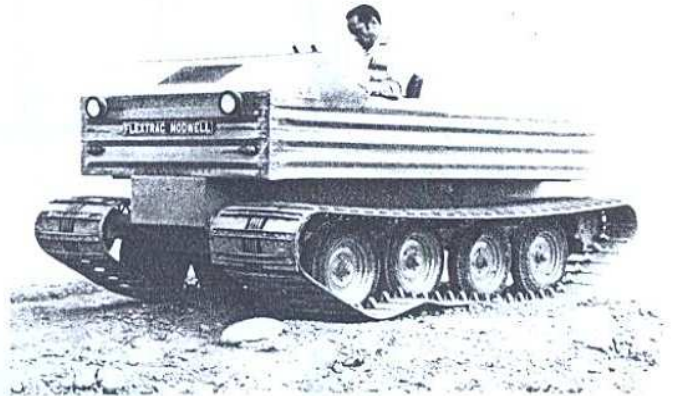


STANDARD SPECIFICATIONS FOR MODEL

Flextrac

P.O. BOX 5544, STATION A • 1201 42nd AVE. S.E., CALGARY, ALBERTA
 TELEPHONE 287-2280 • AREA CODE 403 • TELEX NO. 038-21566

REPRESENTED BY



	25" track	Snow track
Weight - 2-man cab	3550 lb 1615 kg	3825 lb 1735 kg
- personnel body	3950 lb 1795 kg	4200 lb 1900 kg
Gross Weight	4950 lb 2249 kg	5225 lb 2365 kg
Track area 6" penetration	4900 sq in 3.16 m ²	6800 sq in 4.39 m ²
Ground pressure - unloaded	1.00 psi	0.73 psi
- 2-man cab	0.0703 kg/cm ²	0.05 kg/cm ²
- personnel body	1.18 psi 0.83 kg/cm ²	0.87 psi 0.06 kg/cm ²
Ground pressure - loaded	1.37 psi 0.096 kg/cm ²	1.02 psi 0.0703 kg/cm ²
Overall width	85.5 in 217 cm	94.5 in 240 cm
Free board - unloaded	front 6.5 in 17 cm	rear 18 in 46 cm
- loaded	10 in 25 cm	6 in 15 cm

Payload	1000 lb 454 kg
Overall width - tracks off	68.5 in 174 cm
Overall height - less cab	57 in 145 cm
- with cab	80 in 203 cm
Overall length	127 in 323 cm
Maximum speed	22 mph 35 km/h
Ground clearance - loaded	13 in 33 cm
Turning radius - minimum inside	138 in 350 cm
Fording depth	Amphibious
Climbing ability - grade	60 %
Sidehill ability - grade	40 %
Cargo area	28.8 sq ft 2.67 m ²

Power Train:

Engine - Ford 104 C.I.D. V-4 gasoline 65 H.P.
 Transmission - 3-speeds forward; 1 reverse.
 Auxiliary - 2-speed transfer case
 Final drive - Controlled planetary differential in oil bath
 aluminum case
 Steering - Manual levers to hydraulic system
 Brakes - Differential and drive line.

Running Gear:

Load wheels: Rims - 12 x 3, 4-stud
 Tires - 4:50/5:30 x 12, 6-ply
 Suspension - Niedhart, rubber in compression
 Tracks - Rubber belt and channel grousers
 Sprockets - Aluminum with urethane
 Elevated front idlers - Solid rubber tires

Operator's, maintenance and parts manuals (2 sets)
 Antifreeze
 Muffler

Electrical:

Alternator - 38 amp
 Battery - 70 amp/hr
 Instruments: Temperature light; ammeter; oil pressure
 light; hourmeter; fuel gauge.

Body:

Aluminum floater box, two man seating, headlights,
 manual choke, fuel capacity - 15 imperial gallons
 (68 litres), color - International orange.

Frame:

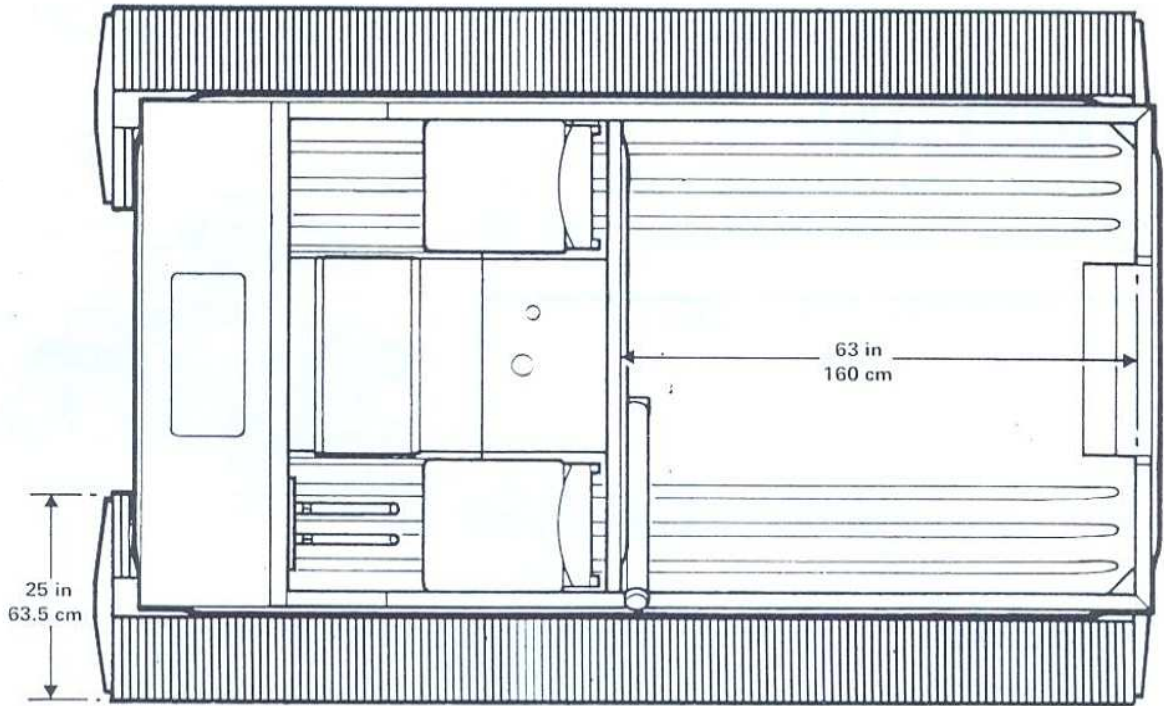
Steel

Tool Kit
 Pintle hook

OPTIONS AVAILABLE including diesel engines and automatic transmissions.

Subject to change without notice

FN10



NOTES

