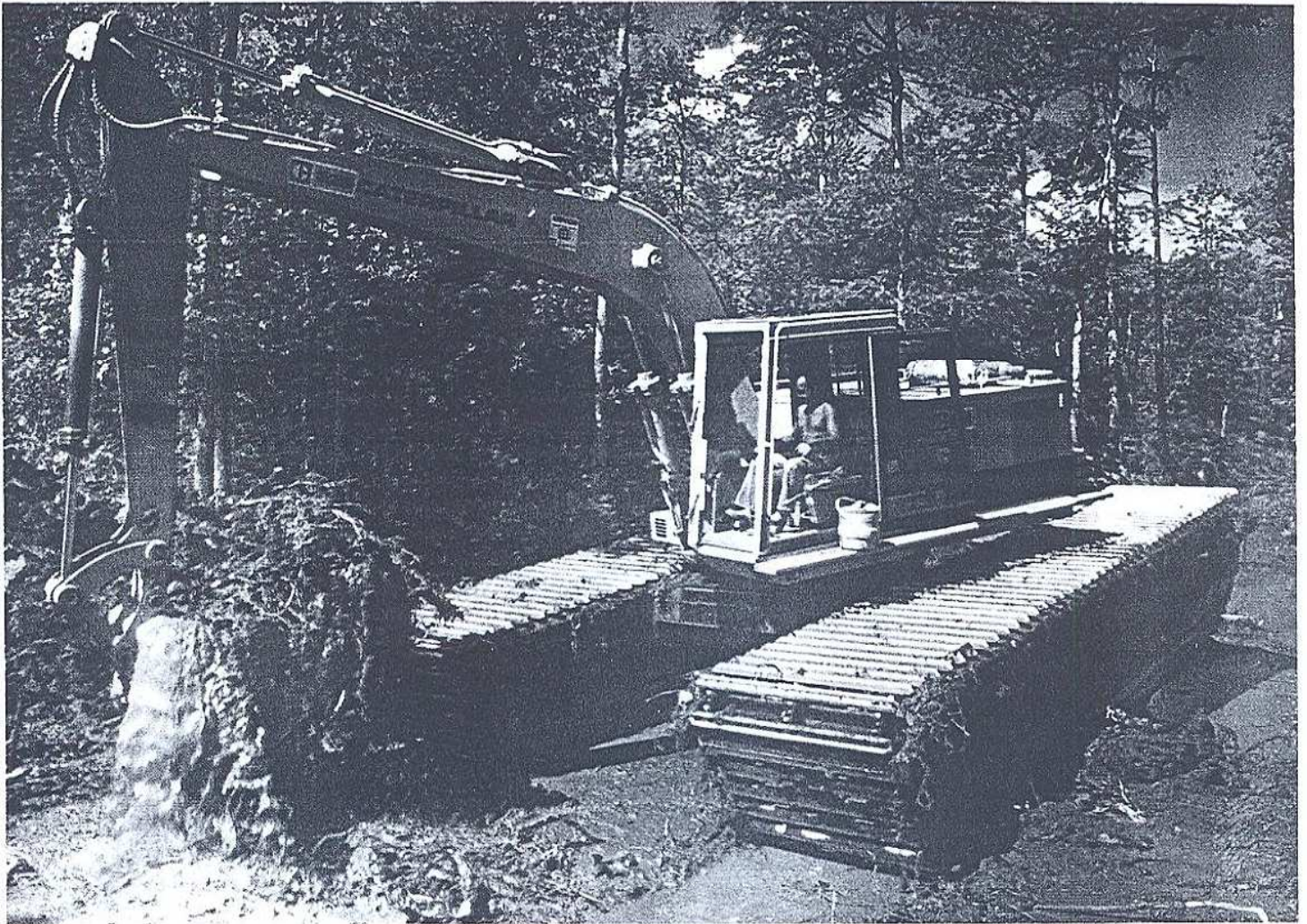


DOES MARSH & SWAMP HAVE YOUR CONSTRUCTION EQUIPMENT BOGGED DOWN?



KORI
CORPORATION

MANUFACTURERS OF
AMPHIBIOUS TRACK DRIVEN HYDRAULIC EXCAVATORS
FOR USE IN MARSH & SWAMP

FEATURES

Hydrostatic Drive
Patented pontoons of Cor-Ten Steel
Travel speed 1.8 M.P.H. in marsh & swamp

Wide track stability
1.4 lbs. per square inch ground pressure
On water.....it floats

M. 97