

CLEAR EMERGENCY-BLOCKED RUNWAYS

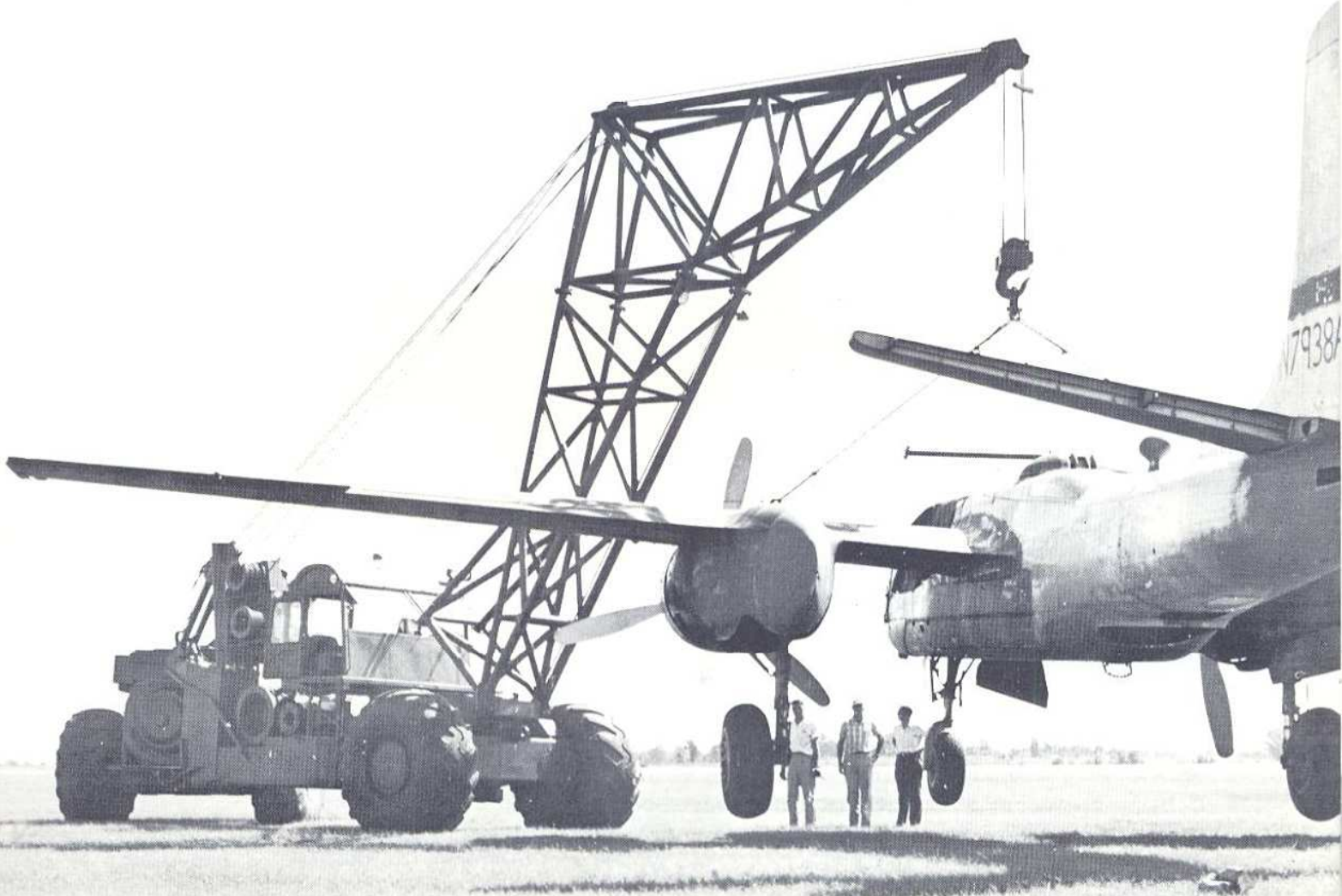
FAST

WITH LeTOURNEAU CRASH CRANES

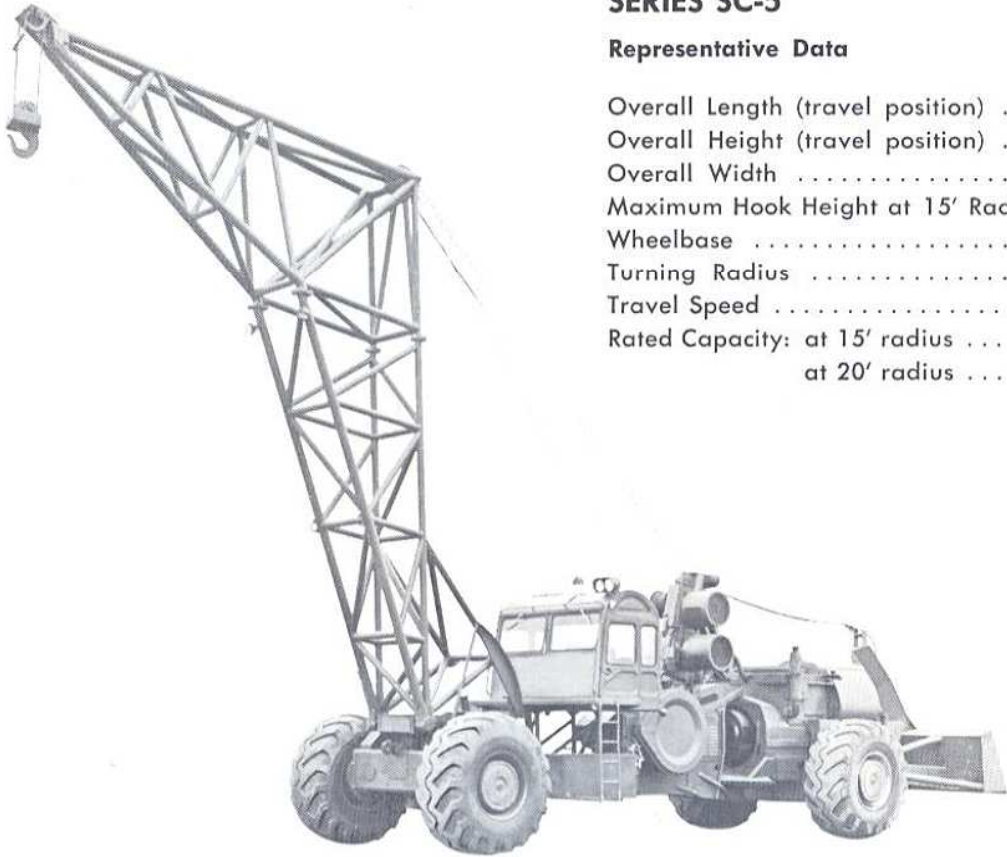
Wide Range of Capacity and Performance
Available in Current Operational Models;
Proven Designs Adapted to Special
Requirements

R.G. LeTOURNEAU INC

GENERAL OFFICES: LONGVIEW, TEXAS, U.S.A.



TYPICAL LeTOURNEAU CRASH CRANES



SERIES SC-5

Representative Data

Overall Length (travel position)	72' 0"
Overall Height (travel position)	20' 0"
Overall Width	12' 3"
Maximum Hook Height at 15' Radius	32' 0"
Wheelbase	25' 0"
Turning Radius	26' 0"
Travel Speed	0 to 15 mph
Rated Capacity: at 15' radius	54,000 lbs.
at 20' radius	40,000 lbs.

Be Ready For Emergencies!

Here is a "family" of machines designed specifically for handling damaged or disabled aircraft.

These are emergency vehicles with many utility uses around an airport. They will remove wreckage from runways, handle heavy lifts anywhere on the field, or provide a velvet-smooth tow for heavy aircraft, if desired.

Completely mobile, on runways or off, LeTourneau Crash Cranes bring tremendous power to bear wherever it's needed — for lifting, pushing, or winching.

Each vehicle is equipped with diesel-driven generators that supply instantly controllable electric power for all crane functions. Powerful motors and gear reductions apply this power to the wheels, winches, booms, and every other powered component. The result is a "powerhouse" on wheels — one that gets to emergency sites quickly with the apparatus and power for proper clearing or salvage.

AIR ARMS OF FIVE NATIONS

to help keep military air operations

Only after intensive design competition

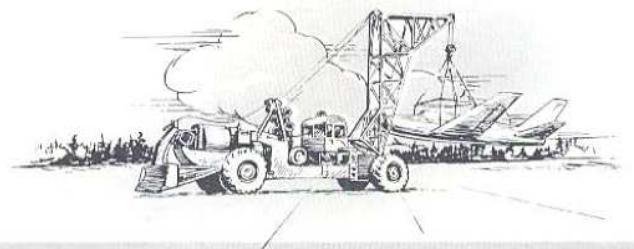
LeTourneau Crash Cranes specifically

reasons this all electric design was chosen

SMOOTH, DC ELECTRIC DRIVE — Puts infinitely controlled tractive power into every wheel. These cranes have the big tractive advantage of powered wheels under the load. Individually powered Electric Wheels keep driving on soft turf as well as on surfaced runways.

How LeTourneau Crash Cranes Move D

LIFT . . .



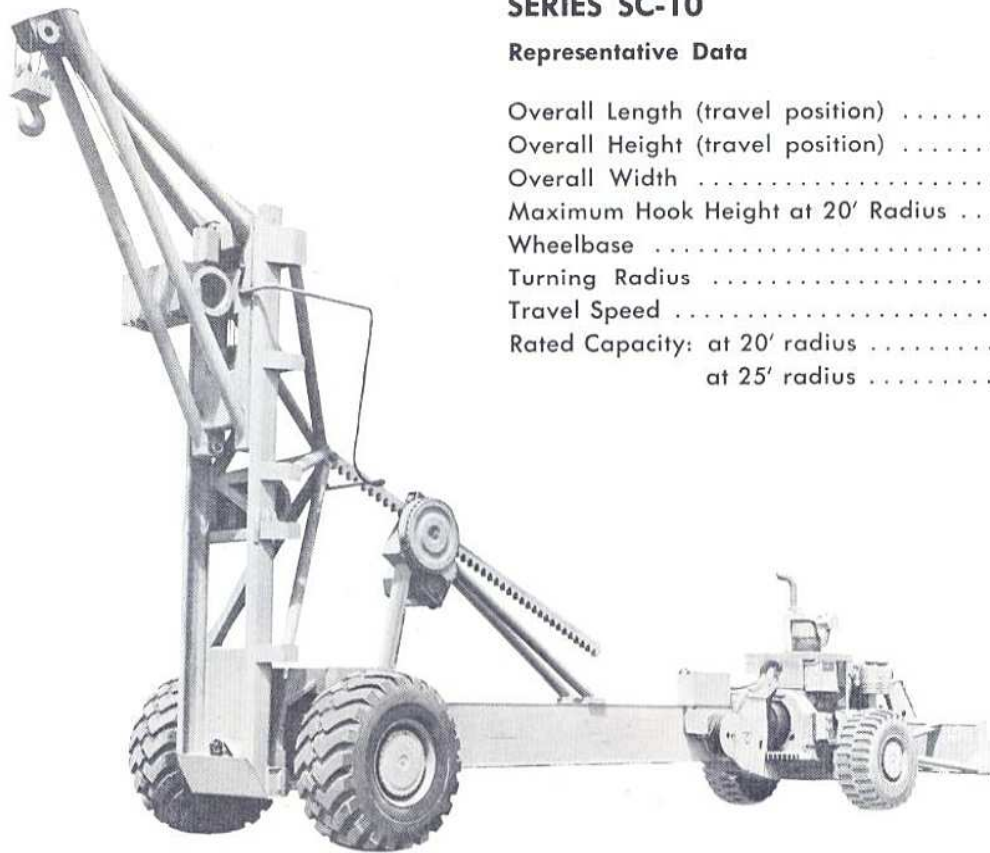
LIFT AND CARRY FOR MAXIMUM SAFETY — With hooks or slings attached to the main structure, aircraft is lifted gently and carried to hangar with no additional damage.

FOR HANDLING MILITARY AIRCRAFT

SERIES SC-10

Representative Data

Overall Length (travel position)	80' 0"
Overall Height (travel position)	16' 0"
Overall Width	14' 7"
Maximum Hook Height at 20' Radius	25' 6"
Wheelbase	41' 6"
Turning Radius	42' 8"
Travel Speed	0 to 25 mph
Rated Capacity: at 20' radius	80,000 lbs.
at 25' radius	60,000 lbs.



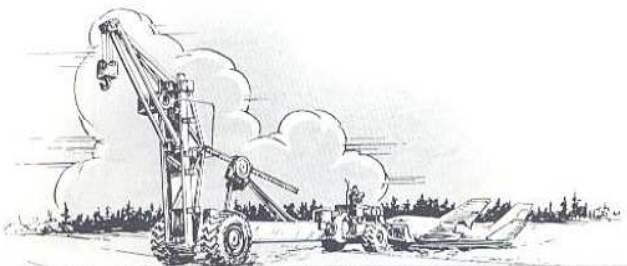
Use LeTourneau Crash Cranes
at peak efficiency.

on and evaluation were
. Here are some of the
selected:

ALL-ELECTRIC CONTROLS — Switch controls and electric power assure instant response when seconds count. Simplicity of electric control permits optional feature of rotating seat and control panel so that operator always faces in direction of travel or work. Electric control also permits operation from remote station.

abled Aircraft Quickly

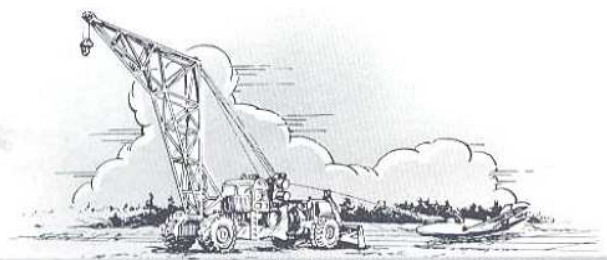
PUSH . . .



BULLDOZE WRECKAGE FOR MAXIMUM SPEED — Four driving wheels develop plenty of traction to push aircraft off the runway fast when time is the major consideration.

DESIGN SIMPLICITY — Motors and gear reductions apply power directly, wherever needed. Design is free of limitations imposed by mechanical power transfer. This permits a lighter, more functional crane — designed specifically for handling aircraft.

WINCH . . .



WINCH DOES JOB IF REQUIRED — If direct contact is to be avoided, powerful winch will pull wreckage off runway. Winch line may also be used to tow undamaged aircraft.

**HERE'S THE "FAMILY" OF LeTOURNEAU
CRASH CRANES NOW SERVING FIVE
NATIONS - ON LAND AND SEA**



ON CARRIER FLIGHT DECK, Series SC-240 demonstrates ability to maneuver in tight places while handling aircraft.

PROVEN SYSTEM IS ADAPTABLE TO SPECIAL REQUIREMENTS

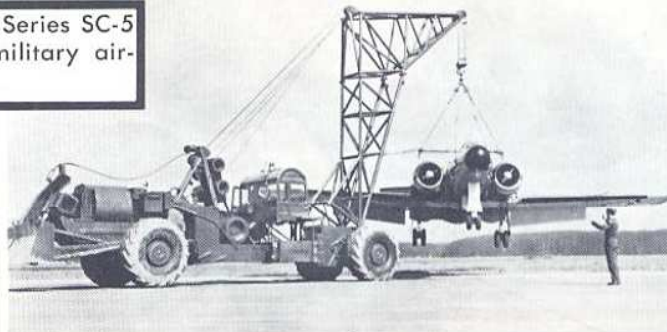
These Crash Crane designs have been developed according to requirements established by individuals directly responsible for the handling of crashed aircraft.

The Electric Power and Control System which makes the designs possible is employed in heavy machinery for logging, transportation, earthmoving, and other heavyduty applications all over the world.

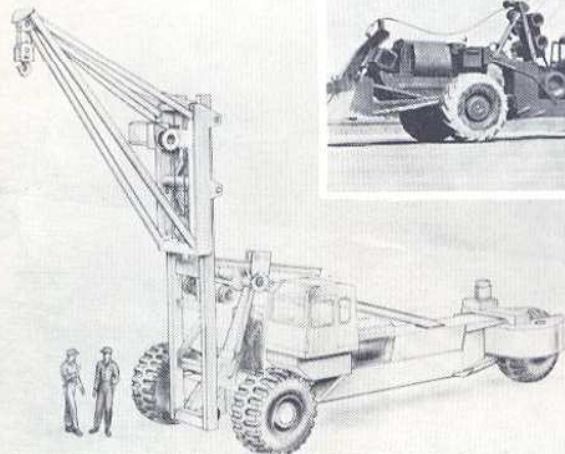
Whatever your requirement for emergency removal of crashed aircraft, standard components within this system can supply the power, mobility, and control to do the job.



ON NATO AIR BASE, this Series SC-5 picks up and carries a military aircraft with absolute safety.



MORE SEAGOING CRANES readied for shipment. These are Series SC-7, with high lift and 50,000 lb. capacity.



NEW UTILITY CRASH CRANE uses proven, 3-wheel design to reduce cost and weight. Will handle aircraft weighing 20 tons.

HEAVY DUTY CONSTRUCTION of Series SC-10 provides for firm handling of heavy aircraft. Hoist is designed to lift 50 tons.



R. G. LeTOURNEAU INC Longview, Texas, U.S.A.

Cable: BOBLETORNO

litho in U.S.A.