

STANDARD SPECIFICATIONS FOR MODEL FN 600

Flextrac

P.O. BOX 5544, STATION A • 1201 42nd AVE. S.E., CALGARY, ALBERTA
TELEPHONE 287-2280 • AREA CODE 403 • TELEX NO. 038-21566

REPRESENTED BY



Weight — basic	83000 lb	Overall height	139 in
	37650 kg		353 cm
Payload	60000 lb	Overall length	50.5 ft
	27215 kg		15.39 m
Gross weight	143000 lb	Deck Length	35 ft
	64860 kg		10.67 m
Track area at 6" penetration	39400 sq in	Maximum speed	9.2 mph
	25.42 m ²		14.8 km/h
Ground pressure — unloaded	2.1 psi	Ground clearance — loaded	24 in
(at zero penetration)	0.148 kg/cm ²		61 cm
— loaded	3.62 psi	Turning radius — minimum inside	53 ft
	0.254 kg/cm ²		16.15 m
Overall width — tracks on	159 in	Fording depth	46 in
	404 cm		116.8 cm
— tracks off	112 in	Climbing ability — grade	60 %
	284 cm	Sidehill ability — grade	30 %

Power Train:

Engines (2) — GM 6V 53,318 cu in V6 diesel
 Transmissions (2) — Semi automatic, 4-speed forward, 2 reverse
 Crossdrives (2) — Controlled planetary differential in oil bath

Outer Planetaries — 3.6:1 reduction
 Steering — Hydraulic full power
 Brakes — Drive line

Frame:
 T1 steel

Electrical:
 Alternator — 55 amp, 12 volt
 Battery — 200 amp/hr

Pintle hook
 Brush guard
 Mufflers
 Exhaust pipe rain caps

Running Gear:

Load Wheels — Rims: 10-stud, HD
 — Tires: 11 x 20, 14-ply
 Suspension — One piece cast steel walking beams with urethane bearings
 Tracks — Rubber belt and flat grousers
 Sprockets — Steel with replaceable urethane inserts
 Elevated front idlers — Solid rubber tires

Cab:

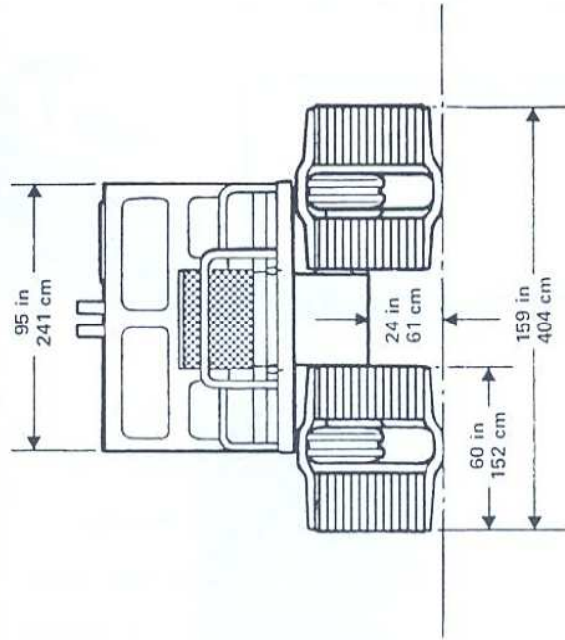
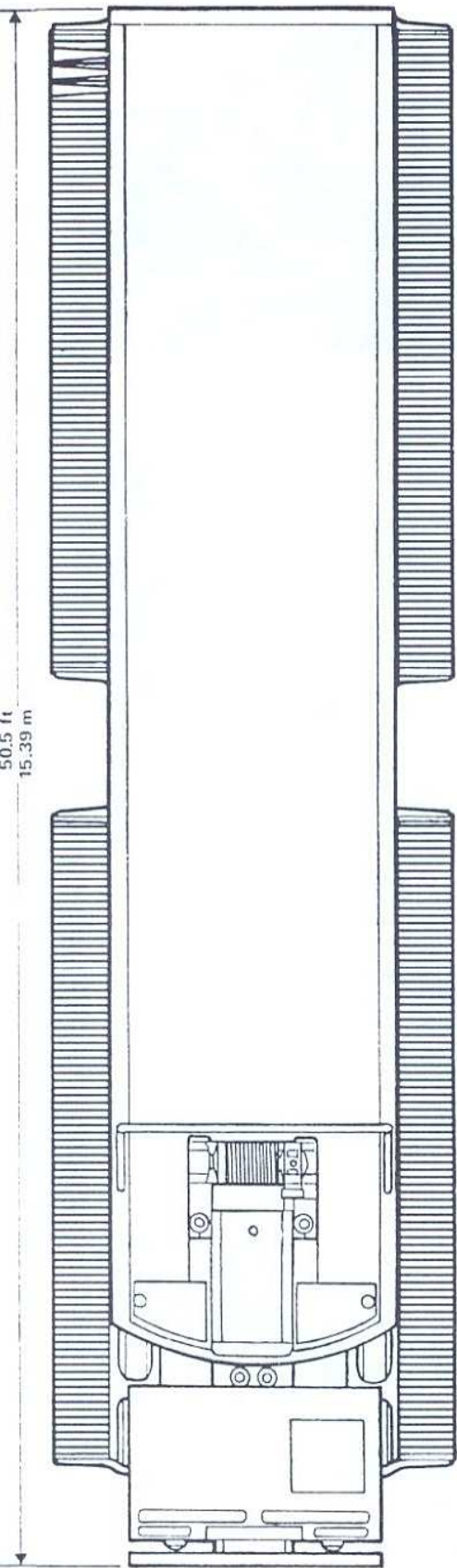
Three-man, steel; tiltable, roll down windows, sprung seats and jump seat; escape hatch; dome light; headlights; panel light; wipers — two speed; manual choke; heaters and defrosters; fuel capacity — 140 imp gallons (636 litres); Color — International orange, eng. compartment light. Instruments — Temperature gauge; ammeter; oil gauge; hour-meter; fuel gauge; tachometer (2); transmission temperature warning light (2).

Operator's, maintenance and parts manuals (2 sets)
 Tool kit
 Antifreeze
 Retainers — Hold door open position
 Winch — Capacity 45 000 lb (20 410 kg)

OPTIONS AVAILABLE

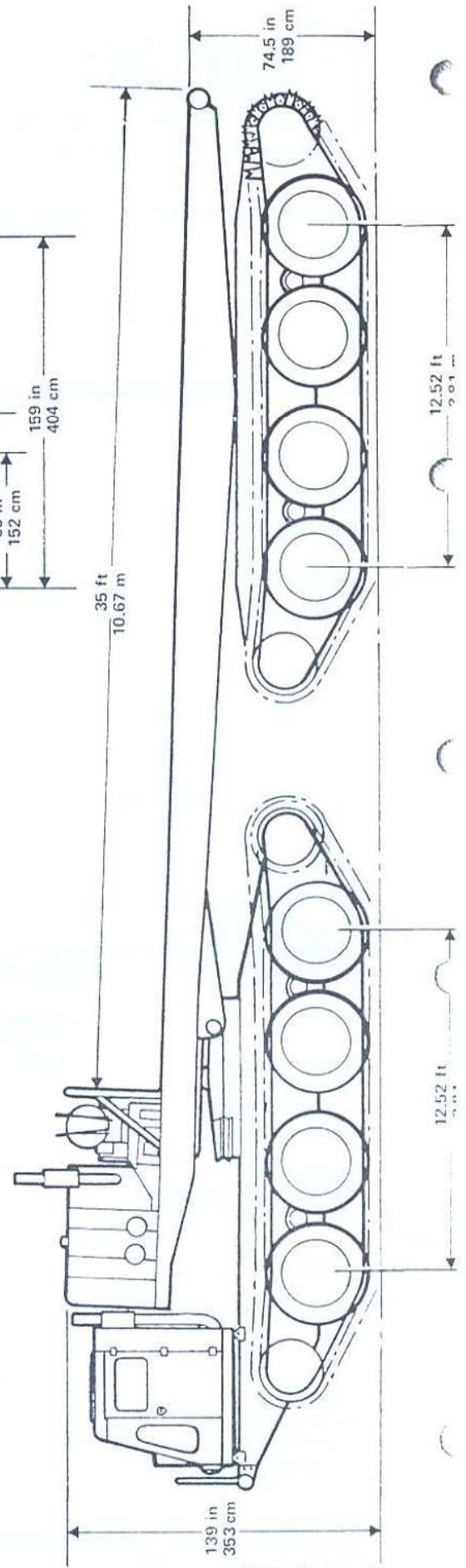
Subject to change without notice

FN 600



NOTES

- _____
- _____
- _____
- _____
- _____
- _____
- _____
- _____
- _____
- _____



STANDARD SPECIFICATIONS FOR MODEL

Flextrac

P.O. BOX 5544, STATION A • 1201 42nd AVE. S.E., CALGARY, ALBERTA
TELEPHONE 287-2280 • AREA CODE 403 • TELEX NO. 038-21566

REPRESENTED BY



Weight – basic	54000 lb	Overall height	123 in
	24490 kg		312 cm
Payload	40000 lb	Overall length	45.33 ft
	18140 kg		13.82 m
Gross weight	94000 lb	Deck length	30 ft
	42640 kg		9.14 m
Track area at 6" penetration	28000 sq in	Maximum speed	10.8 mph
	18.06 m ²		17.4 km/h
Ground pressure – unloaded	1.93 psi	Ground clearance – loaded	16 in
(at zero penetration)	0.136 kg/cm ²		40.6 cm
– loaded	3.36 psi	Turning radius – minimum inside	48 ft
	0.236 kg/cm ²		14.63 m
Overall width – tracks on	123 in	Fording depth	46 in
	312 cm		116.8 cm
– tracks off	108 in	Climbing ability – grade	60 %
	274 cm	Sidehill ability – grade	40 %

Power Train:

Engines (2) – GM 4-53, 212.3 cu. in. 4 cylinder diesel
 Transmissions (2) – Semi automatic, 4-speed forward, 2
 reverse
 Cross drives (2) – Controlled planetary differential in oil
 bath

Outer Planetaries – 3.6:1 reduction
 Steering – Hydraulic full power
 Brakes – Drive line

Frame:

T1 steel

Electrical:

Alternator – 60 amp, 12 volt
 Battery – 200 amp/hr

Pintle hook
 Brush guard
 Mufflers
 Exhaust pipe rain caps

Running Gear:

Load Wheels – Rims: 10-stud, HD
 – Tires: 7:50 x 20, 12-ply
 Suspension – Crank arm with torsion coil spring

Tracks – Rubber belt and spring steel drop centre
 grousers

Sprockets – Steel with replaceable urethane inserts
 Elevated front idlers – Solid rubber tires

Cab:

Three-man, steel; tiltable, roll down windows, sprung
 seats and jump seat; escape hatch; domelight; headlights;
 panel light; wipers – two speed; manual choke; heaters
 and defrosters; fuel capacity – 140 imp gallons (636 litres);
 Color – International orange. eng. compartment light.
 Instruments – Temperature gauge; ammeter; oil gauge; hour-
 meter; fuel gauge; tachometer (2); transmission temp-
 erature warning light (2).

Operator's, maintenance and parts manuals (2 sets)

Tool kit
 Antifreeze
 Retainers – Hold door open position
 Winch – Capacity 45000 lb (20410 kg)

OPTIONS AVAILABLE

Subject to change without notice

