

Standard Vehicle Specifications

NODWELL[®] RN400

TRANSPORTER

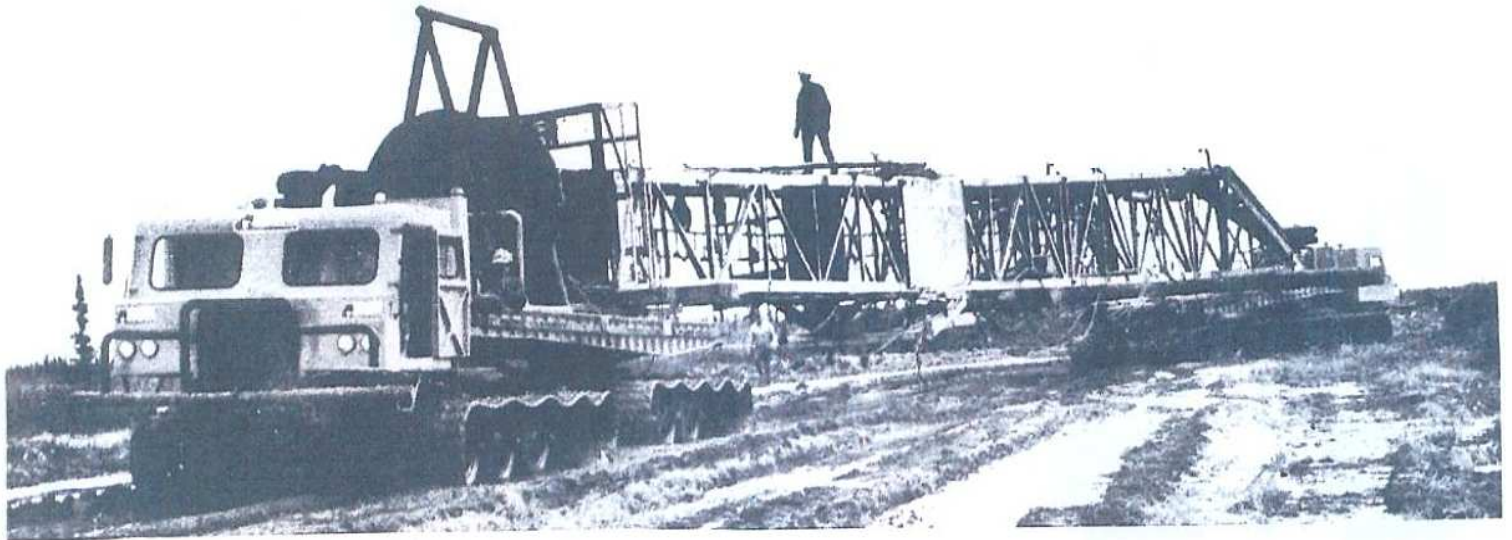


Low Ground-Pressure Tracked Carriers



1967

"MOVE IT!"



WWW.SAFETYONEINC.COM

ANYWHERE, ANYTIME... EVEN THROUGH THE 'MUSKEG
WITH A NODWELL TRANSPORTER!

Shown here is the complete mast of a rig being moved through the Rainbow muskeg by matched Nodwell Transporters.

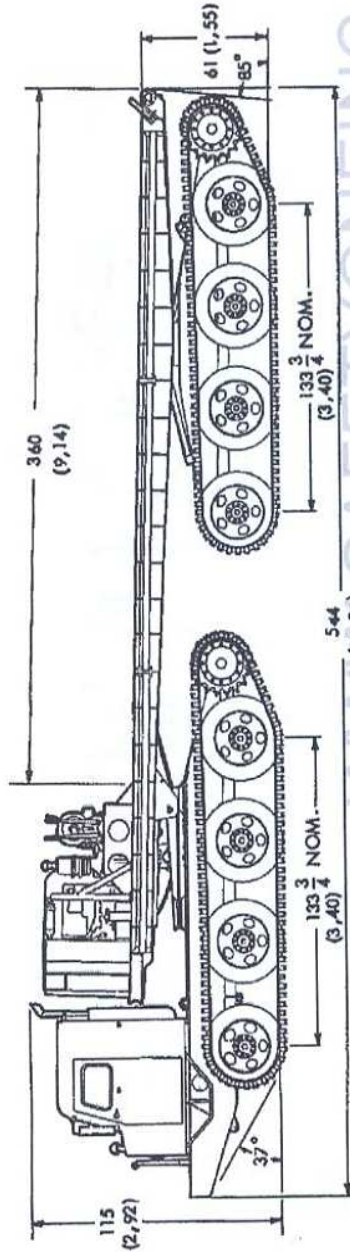
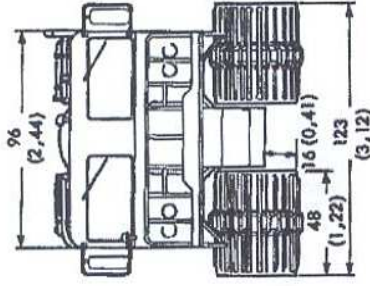
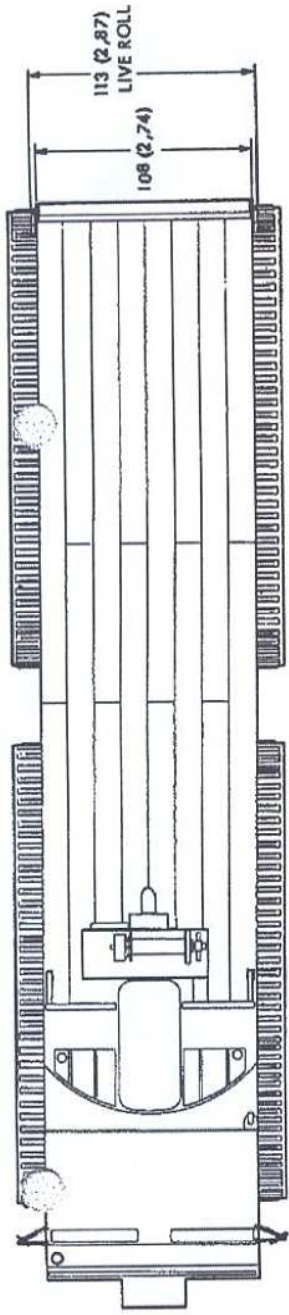
Contact Nodwell for information on the new huge four tracked transporter, the RN400, that carries the heaviest rig component with ease.

THE NODWELL FAMILY



ROBIN-NODWELL MFG. LTD.
P.O. Box 1450,
Calgary, Alberta.

Dealer

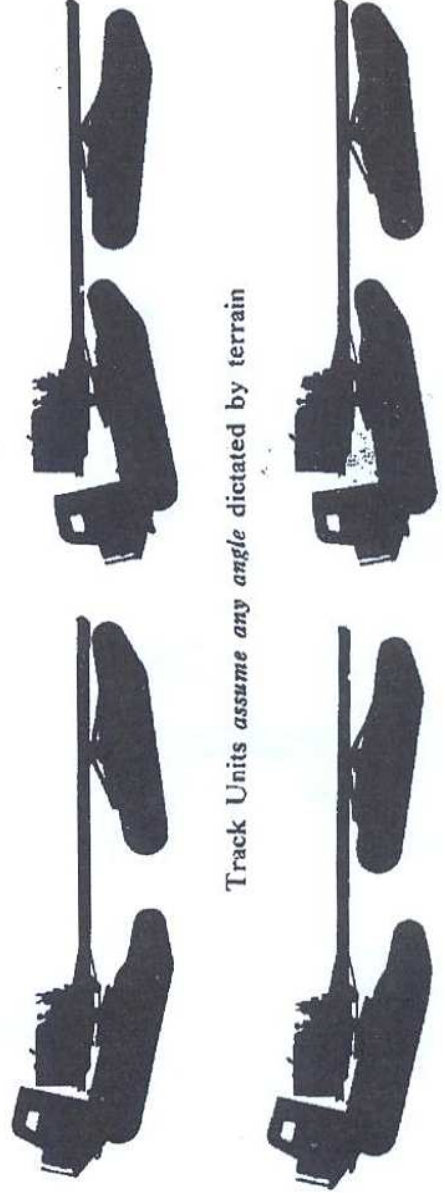


Dimensions in parentheses () are in meters;
all other dimensions are in inches.

WWW.SAFETYONEINC.COM

POWER TRAIN. Power is supplied by two diesel engines through two Allison semi-automatic transmissions to the planetary drive rear axles. Tachometers are used by the operator for synchronization of front and rear engines.

FRONT AND REAR TRACK UNITS can each assume any transverse and/or lateral angle, depending upon the dictates of the terrain.



Track Units assume any angle dictated by terrain

PRELIMINARY SPECIFICATIONS

General:

Ground Pressure @
 - penetration -
 Unloaded 1.8 P.S.I.
 Loaded 3.25 P.S.I.
 Track Area 28,000 sq. ins.
 Minimum Turning Radius 25 feet
 Ground Clearance, Loaded 16"
 Fording Depth 48"
 Gradeability 60%
 Angle of Approach 40°
 Angle of Departure 85°

Maximum Speeds @ 2500 R.P.M.

1st gear 2.04 MPH
 2nd gear 4.38
 3rd gear 7.78
 4th gear 10.80
 Reverse (low) 1.79
 Reverse (high) 2.50

Weights:

Unloaded (net) 50,000 lbs.
 Payload (tare) 40,000 lbs.
 Loaded (gross) 90,000 lbs.

Dimensions:

Length 45'4"
 Width, over tracks 123"
 Width, tracks removed 108"
 Height 125 1/2"
 Deck height, unloaded 66"
 Deck length 30'
 Deck width 9'

Engine Characteristics (2 engines)

Manufacturer G.M.
 Model 4-53
 Type 4 valve - 2 cycle
 Fuel Diesel
 Max. B.H.P. 130 @ 2800 RPM
 Max. Torque (net) 254 @ 1200 RPM
 Number of Cylinders 4
 Bore and Stroke 3 1/4" x 4 1/2"
 Displacement 212.3 cu. in.
 Lubrication System Forced Feed
 Oil Pressure 40 P.S.I.
 Operating Temperature (recommended) 170°
 Recommended Idling Speed 1,000 RPM
 Governor Variable Speed

Fuel System: Injection pump with governors

Injectors - Type S-45
 Size 45 cu. mm.

Road Wheels:

Type Pneumatic (Michelin)
 Tire Size 7.50 x 20"
 Ply Rating 10
 Type of tread Highway
 Wheels HD 10 Stud
 Spindle & Hub Assembly # 30 Timken Brgs.

TRACKS

Width 48"
 Grouser Forged Springs steel HT
 Bolts 3/4" SAE with locking nut
 Belts Nodwell 5 ply 18"
 Splice Overlap type

Fifth Wheel:

Size 34" Heavy Duty
 Type Side Oscillating

Capacities (Imperial Measure):

(Total for Machine)
 Fuel Tank (2) 140 gals.
 Crankcase (2) 22 quarts
 Cooling System (2) 32 quarts
 Transmission (2) 40 quarts
 Differential (2) 28 quarts
 Outer Planetaries (4) 12 quarts
 Air Cleaner (2) 1 quart

Winch:

Make Braden MS-20
 Position Deck Mounted
 Capacity 45,000 lbs. c/w 3/4" line

Hydraulic Pump:

Make Vickers
 Type V 200
 Rated Capacity @ 1500 P.S.I. 11 G.P.M.

Frame:

Mainframe of T1 steel

Electrical System:

Battery - Number used 2
 Voltage 12 V
 Type Wet
 Capacity 200 Amp. Hrs.
 Ground Terminal Negative
 Alternator (1) - Make Delco-Remy
 Model 60 amp.
 Voltage 12
 Starting Motor - Make Delco Remy
 Voltage 12
 Regulator - Make Delco Remy
 Voltage 12
 Capacity 60 amp.

Power Train:

Transmission - Make Allison
 Number required 2
 Model CT-3340
 Type 4 speed semi auto.
 Gear Ratios
 1st gear 3.81
 2nd gear 1.94
 3rd gear 1.00
 4th gear 0.72
 Reverse (low) 4.35
 Reverse (high) 3.12

Torque Converter - Make Allison
 Model TC 420
 Stall Torque Ratio 2.88 to 1
 Differential - Make Timken
 Model PR - 101
 Number required 2

Outer Planetaries - Make Timken
 Model PR - 101
 Reduction (final) 3.6 to 1
 Number required 4

Steering:

Type Hydraulic
 Cylinders - Size 5 inch
 Type Single acting
 Number required 2

Brakes:

Driving - Type Drive line
 Make Tru-Stop Disc
 Parking - Type Drive line
 Make Allison Drum

Suspension and Running Gear:

Type Crank Arm with torsion coil spring
 Drive Sprocket Urethane (dbl) 14" tooth - 5" pitch

Cab:

Size 2-man
 Lining 1/4" Birch Plywood
 Insulation Rockwool
 Seats (2) Bostrum

Controls:

Make Hydronic
 Type Remote Control
 Number required 5
 Purpose:
 Steering 1
 Throttles 2
 Gear Shift 2

Instruments:

Hour Meter (2) Direct Reading
 Tachometer (2) Electric
 Oil Pressure (2)
 Water Temperature (2)
 Transmission Temp Warning Light (2)
 Ammeter (1)

Miscellaneous:

Grill Guard Full Width
 Live Roll 8" diameter full width
 Spare Wheel & Tire with roller bearings
 Pintle Hook Mounted
 Rear View Mirror Swivel type, extra HD
 Deck Spot Light West Coast (2)
 Cab Heater Sealed beam, mtd. to face rear deck
 Radiator Shutters Water type (2)
 Starting Fluid Applicators 2
 Engine Mufflers 2
 Windshield Defrosting Fans 2
 Floor Deck 2
 Track Mounting Tool 1
 Dbt. - Sub Floor 1 1/4" Hardwood
 Work Floor 3/4" Pine